

Bowie Power Station Interconnection Update

**9th Biennial Transmission Assessment
Workshop**

June 1, 2016

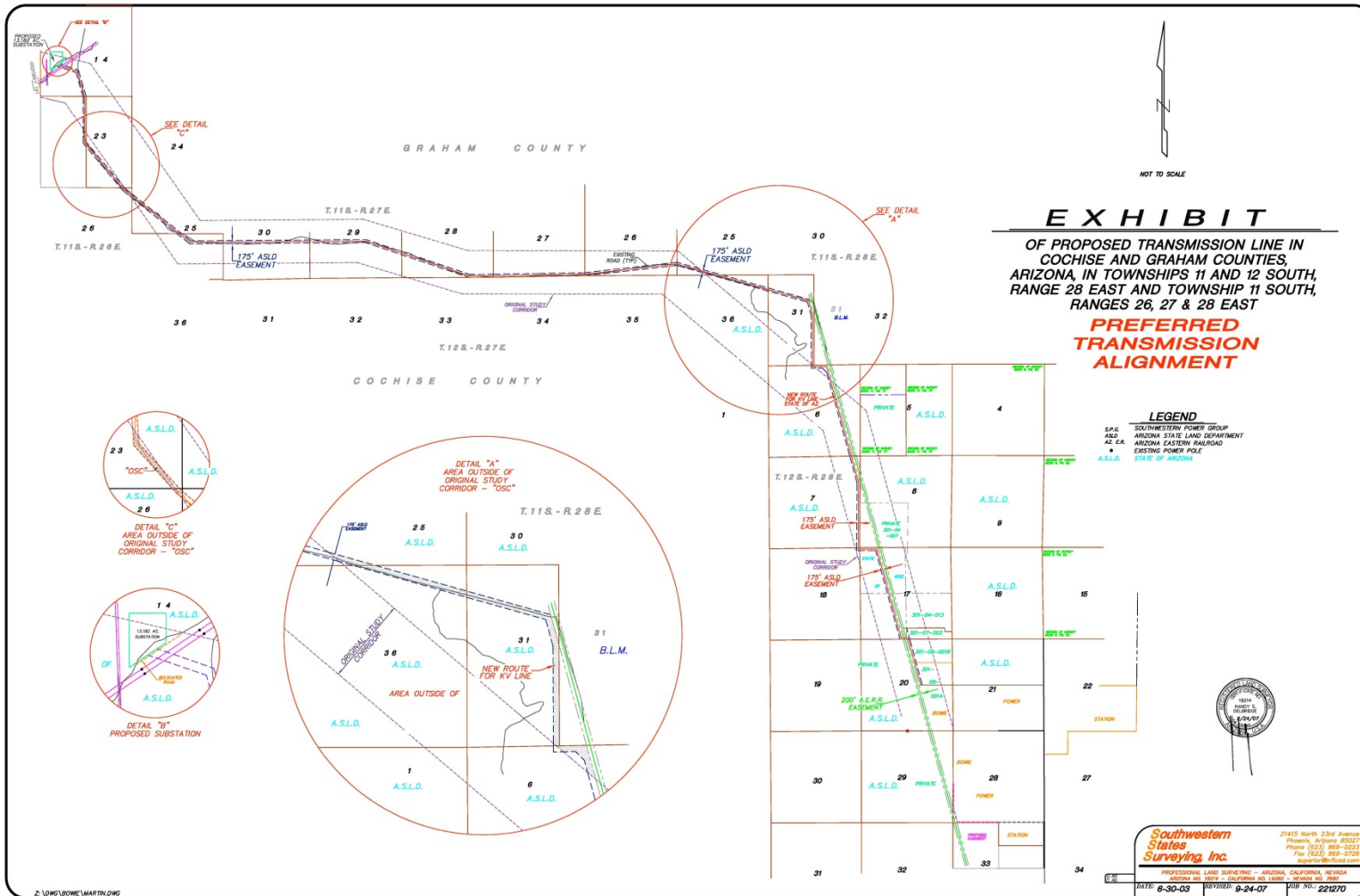


Bowie Power Station



- Nominal 1,000 MW natural gas electric generating facility in Cochise County, Arizona
- May be comprised of both simple and combined-cycle turbine configurations depending on utility customer needs
- Interconnection is with TEP's existing Greenlee-Winchester 345kV transmission line at the proposed Willow-345kV substation
- Initial commercial operation is expected by December 2020

Approved double-circuit 345 kV line and Willow 345 kV Substation



Bowie's Interconnection Status



- SWPG & TEP entered into an Interconnection Facilities Study Agreement on October 12, 2012
- TEP provided the Facility Study for the Willow 345 kV Substation on October 29, 2013
- SWPG & TEP executed a Large Generator Interconnection Agreement (LGIA) on January 30, 2015
- The Bowie Generator Interconnection Study Report and Facility Study were filed in Bowie's ACC Docket (No. E-00000D-15-0001) on February 23, 2015

Transmission Planning Forums

- Bowie, through its owner SWPG, participates in:
 - Regional transmission planning forums
 - Southwest Area Transmission Group and its subcommittees
 - On-going activities of WestConnect
- SWPG is a Class 3 member in good standing in the Western Electricity Coordinating Council



For more information:

www.bowiepower.com

BOWIE
POWER STATION