

# ARIZONA CORPORATION COMMISSION PIPELINE SAFETY SECTION



**UNDERGROUND FACILITY LAW ENFORCEMENT**

**602-262-5601**



KNOW WHAT'S BELOW. CALL 811 OR CLICK [ARIZONA811.COM](http://ARIZONA811.COM) BEFORE YOU DIG



# ARIZONA CORPORATION COMMISSION (ACC)

## ✓ ENFORCEMENT AGENCY FOR THE STATE OF ARIZONA'S UNDERGROUND FACILITY LAWS:

- Arizona Revised Statutes, Title 40, Article 6.3  
§ 40-360.21 to § 40-360.32
- R14-2-106A to R14-2-106D

***Civil penalty of up to \$5,000 per violation***



KNOW WHAT'S BELOW. CALL 811 OR CLICK [ARIZONA811.COM](http://ARIZONA811.COM) BEFORE YOU DIG



# We hope this is the *only* time you see this:

**NOTICE OF VIOLATION**  
UNDERGROUND FACILITY LAW

NOTICE NUMBER **30134**

ARIZONA CORPORATION COMMISSION

PIPELINE SAFETY SECTION

YOU ARE HEREBY NOTICED OF THE FOLLOWING VIOLATIONS OF ARIZONA REVISED STATUTES

AM	PM	FACILITY INVOLVED	PHONE

WITHOUT ADMITTING GUILT - COPY RECEIVED BY \_\_\_\_\_ DATE \_\_\_\_\_ CONTACT PERSON \_\_\_\_\_ DATE MAILED \_\_\_\_\_ A.C.C. REPRESENTATIVE \_\_\_\_\_

ORIGINAL/FILE COPY

REV.4-25-14



KNOW WHAT'S BELOW. CALL 811 OR CLICK ARIZONA811.COM BEFORE YOU DIG



KNOW WHAT'S BELOW. CALL 811 OR CLICK [ARIZONA811.COM](http://ARIZONA811.COM) BEFORE YOU DIG



# WHAT IS EXCAVATION?

## DEFINITION:

Any operation in which earth, rock, or other material in the ground is moved, removed or otherwise displaced by means or use of any tools, equipment or explosives and includes, without limitation, grading, trenching, digging, ditching, drilling, auguring, boring, tunneling, scraping, cable or pipe plowing and driving.



KNOW WHAT'S BELOW. CALL 811 OR CLICK [ARIZONA811.COM](http://ARIZONA811.COM) BEFORE YOU DIG



# LEADING CAUSES OF UNDERGROUND FACILITY DAMAGES

- ✓ Directional boring without potholes
- ✓ Mismarks or no marks
- ✓ Assumption of facility depths
  - *Depth is not covered in underground facilities law*
- ✓ Excavating without a locate request; excavator did not contact 811
  - *Landscaping, sidewalk and driveway replacement, fencing, planting trees*
- ✓ Potholing with non-hand tools





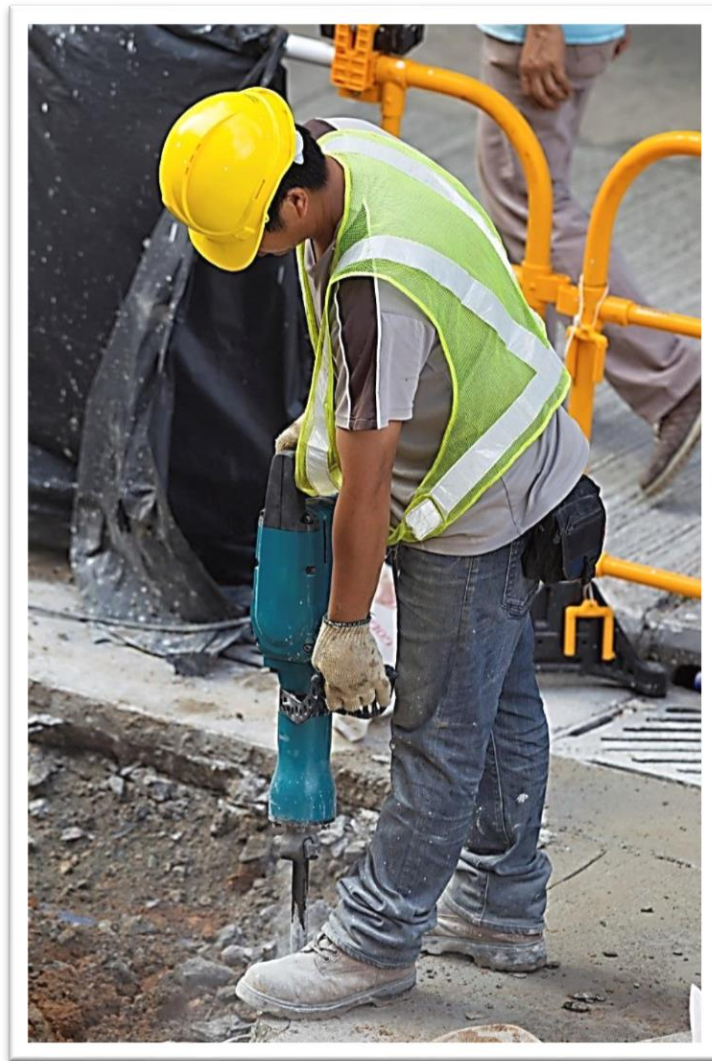
**THIS IS NOT A  
HANDTOOL!**



**KNOW WHAT'S BELOW. CALL 811 OR CLICK [ARIZONA811.COM](http://ARIZONA811.COM) BEFORE YOU DIG**



# ALSO NOT A HAND TOOL:



KNOW WHAT'S BELOW. CALL 811 OR CLICK [ARIZONA811.COM](http://ARIZONA811.COM) BEFORE YOU DIG





# GOOD HAND TOOLS:



KNOW WHAT'S BELOW. CALL 811 OR CLICK [ARIZONA811.COM](http://ARIZONA811.COM) BEFORE YOU DIG



# ASSUMPTION OF FACILITY DEPTH

“But I’m only digging 6 inches deep!”



KNOW WHAT'S BELOW. CALL 811 OR CLICK [ARIZONA811.COM](http://ARIZONA811.COM) BEFORE YOU DIG



# ASSUMPTION OF FACILITY



KNOW WHAT'S BELOW. CALL 811 OR CLICK [ARIZONA811.COM](http://ARIZONA811.COM) BEFORE YOU DIG



# EXCAVATING WITHOUT LOCATE



KNOW WHAT'S BELOW. CALL 811 OR CLICK [ARIZONA811.COM](http://ARIZONA811.COM) BEFORE YOU DIG



# IGNORED PIPELINE MARKS



KNOW WHAT'S BELOW. CALL 811 OR CLICK [ARIZONA811.COM](http://ARIZONA811.COM) BEFORE YOU DIG



# POTHOLING WITHOUT HAND TOOLS

**This is not the hand tool**



**THIS is!**



KNOW WHAT'S BELOW. CALL 811 OR CLICK [ARIZONA811.COM](http://ARIZONA811.COM) BEFORE YOU DIG



# LOCATE MARKS NOT MAINTAINED



**Marks have been destroyed**



**KNOW WHAT'S BELOW. CALL 811 OR CLICK [ARIZONA811.COM](http://ARIZONA811.COM) BEFORE YOU DIG**



# IS THIS EXCAVATION?



# YES!

Sign installation  
requires utility locating



KNOW WHAT'S BELOW. CALL 811 OR CLICK [ARIZONA811.COM](http://ARIZONA811.COM) BEFORE YOU DIG





# POTHOLING?

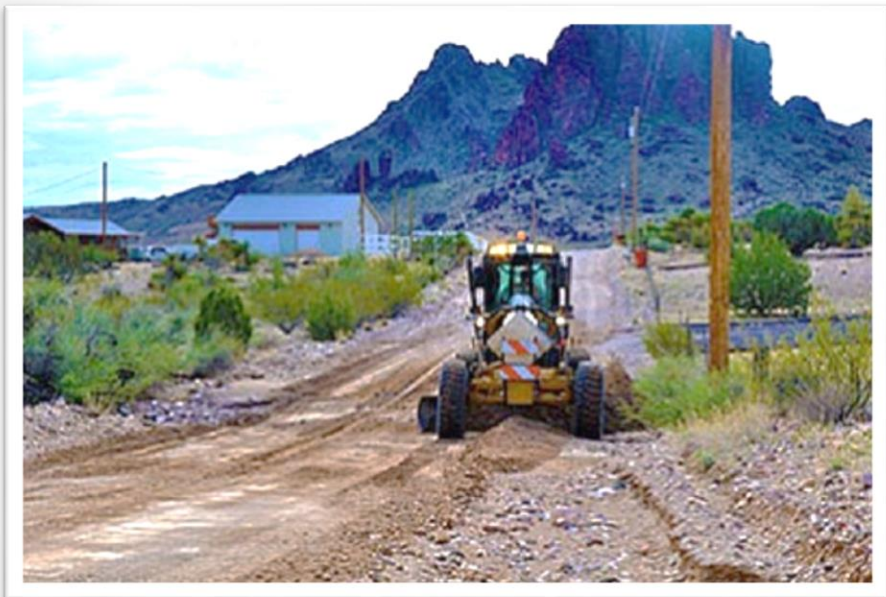
Total = \$180,000



KNOW WHAT'S BELOW. CALL 811 OR CLICK [ARIZONA811.COM](http://ARIZONA811.COM) BEFORE YOU DIG



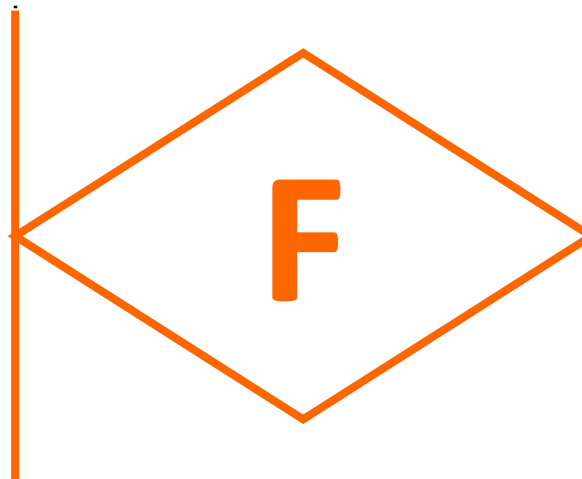
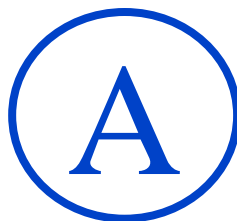
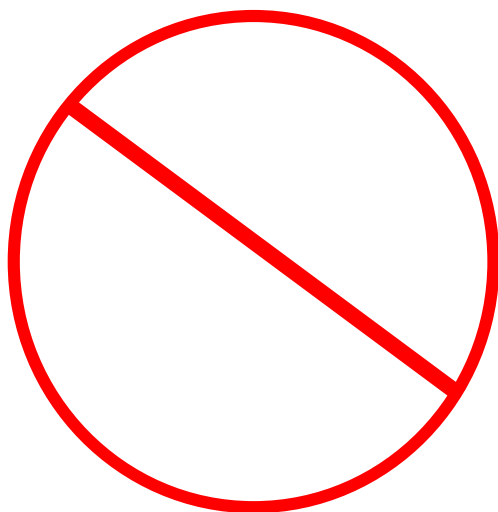
# Road Maintenance Not Exempt



KNOW WHAT'S BELOW. CALL 811 OR CLICK [ARIZONA811.COM](http://ARIZONA811.COM) BEFORE YOU DIG

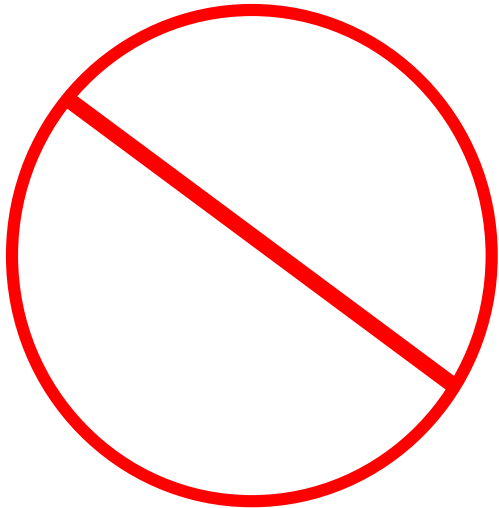


# UTILITY MARKS [INDUSTRY STANDARDS]





# UTILITY MARKS [INDUSTRY STANDARDS]



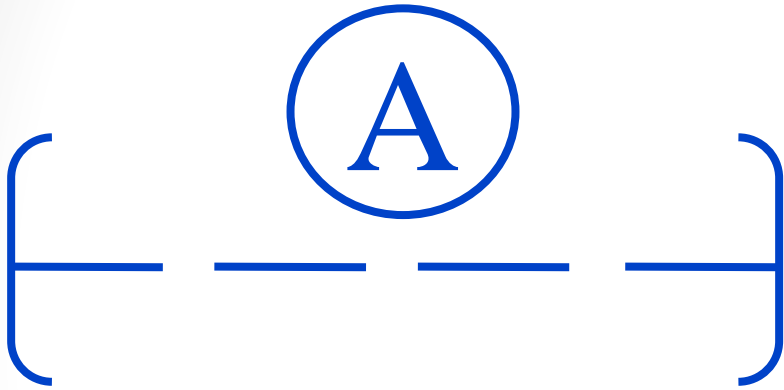
## NO ACCESS:

Locator did not have access to the dig site and was unable to complete the locate.

**In this example, it is for ELECTRIC because the mark is in red**



# UTILITY MARKS [INDUSTRY STANDARDS]



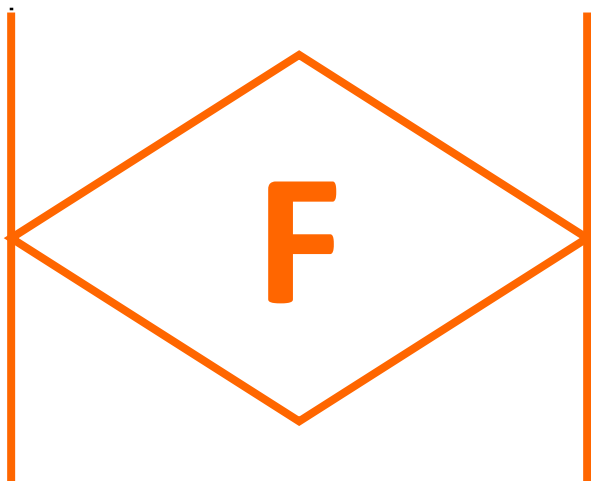
## **ABANDONED:**

**No longer in service and physically disconnected from a portion of the facility, or from any other facility, that is in use or still carries service.**

**In this example, it is for WATER because the mark is in blue**



# UTILITY MARKS [INDUSTRY STANDARDS]



## CONDUIT/DUCT RUN:

Represents an underground conduit/duct structure or any other facility more than 12" in diameter. An "F" indicated in the diamond will indicate fiber optics facility.



# UTILITY MARKS [INDUSTRY STANDARDS]



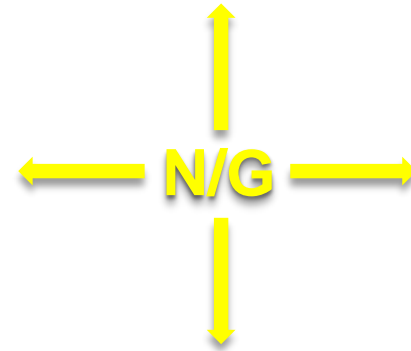
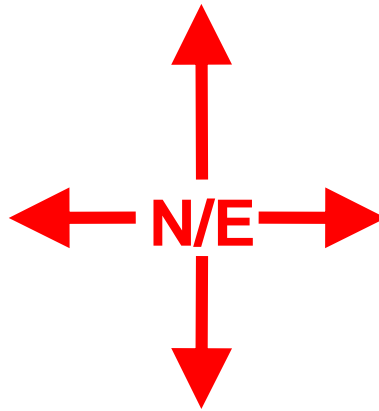
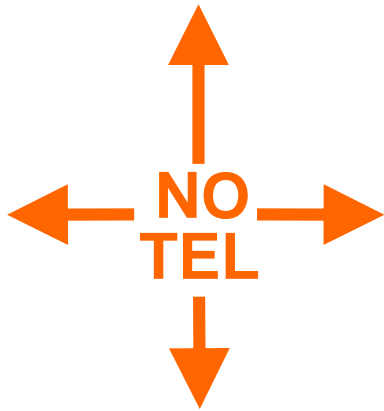
**UNDERGROUND RUNNING LINE:**  
Connected and in use by the utility company. The color will correspond to the regulated color designations on the Uniform Color Code for Utility Markings.

**In this example, it is for SEWER because the mark is in green**





# UTILITY MARKS [INDUSTRY STANDARDS]



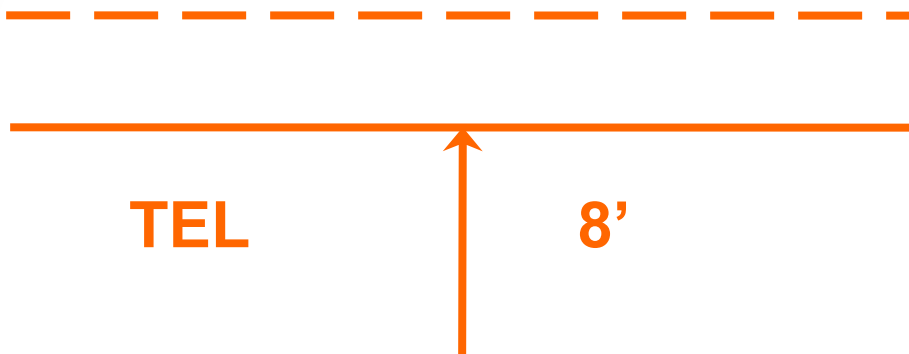
## NO CONFLICT:

The facility owner/operator does not have any lines, ducts or other facilities buried at the dig site you identified. Colors will correspond to the regulated color designations on the Uniform Color Code for Utility Markings.





# UTILITY MARKS [INDUSTRY STANDARDS]



**Example:**  
Telephone is located  
8 feet from line in  
direction of arrow.

## OFFSET MARKING:

Placed on nearest permanent surface when facility is beneath a non-permanent surface such as grass or dirt. In this example, telephone is 8 feet from the location of this marking in the direction of the arrow.

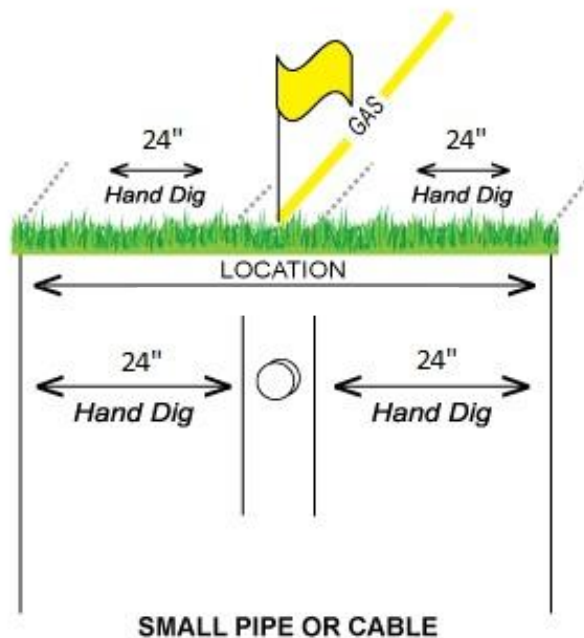
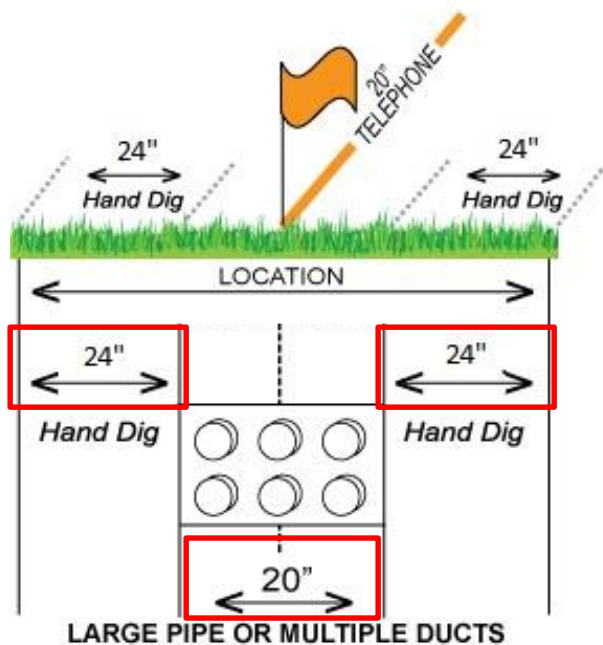
# GOOD EXAMPLE OF OFFSET MARKS AT A DIG SITE:



**\* OFFSET MARKS ARE RECOMMENDED AND VALID ONLY IF APPROVED BY THE EXCAVATOR \***



# REMEMBER THE “2 FOOT RULE”



**24” on either side of marked facility**

**24” + 20” facility + 24” =**

**68” of digging with hand tools**



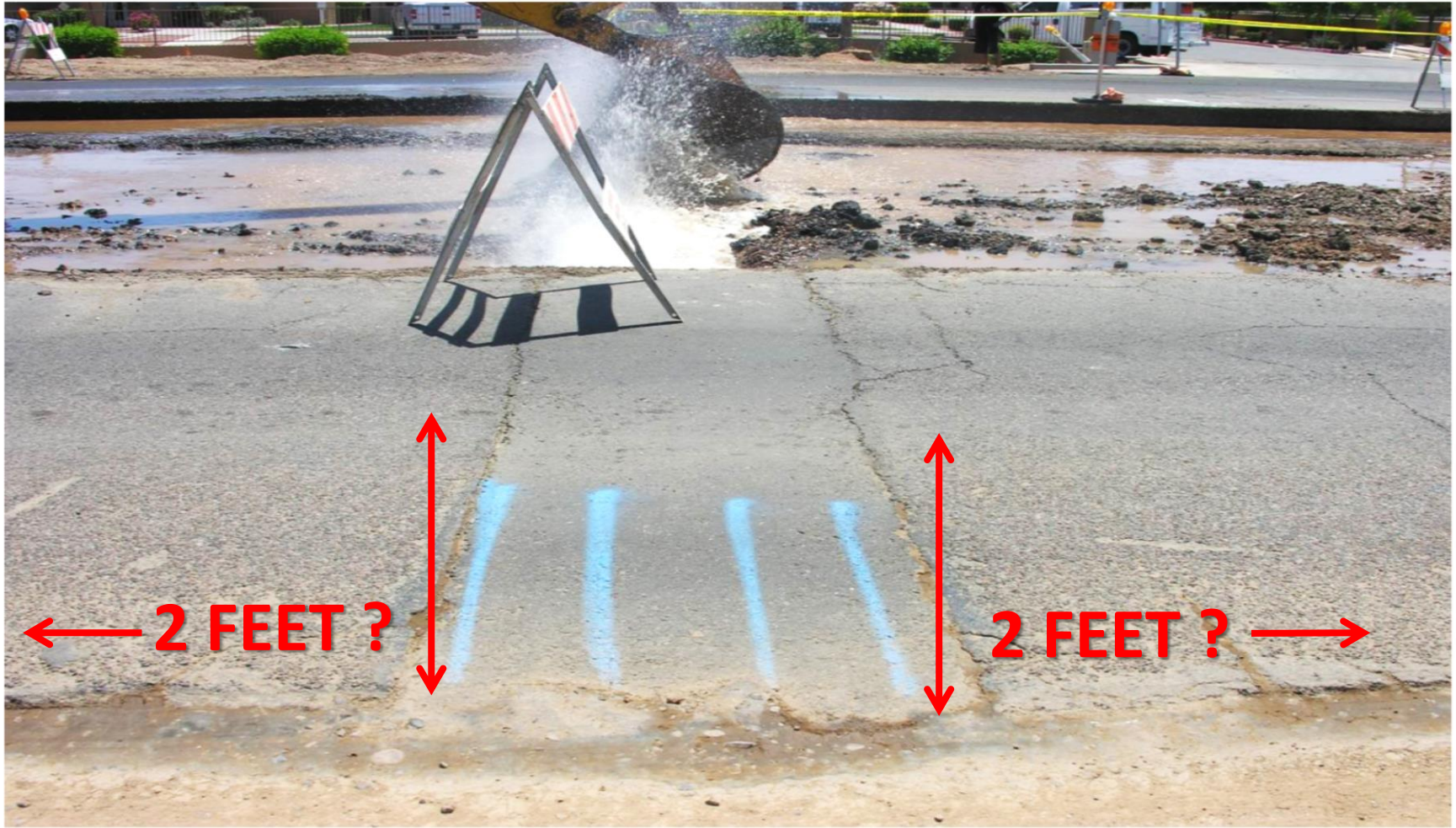
# GOOD EXAMPLE OF A WELL-MARKED DIG SITE:



KNOW WHAT'S BELOW. CALL 811 OR CLICK [ARIZONA811.COM](http://ARIZONA811.COM) BEFORE YOU DIG



# GOOD MARKS VS. BAD DIG:



KNOW WHAT'S BELOW. CALL 811 OR CLICK [ARIZONA811.COM](http://ARIZONA811.COM) BEFORE YOU DIG



# NEVER ASSUME!



KNOW WHAT'S BELOW. CALL 811 OR CLICK [ARIZONA811.COM](http://ARIZONA811.COM) BEFORE YOU DIG



# IF YOU DAMAGE A FACILITY



KNOW WHAT'S BELOW. CALL 811 OR CLICK [ARIZONA811.COM](http://ARIZONA811.COM) BEFORE YOU DIG



# REMEMBER: MANY FACILITIES WERE INSTALLED BEFORE GROWTH

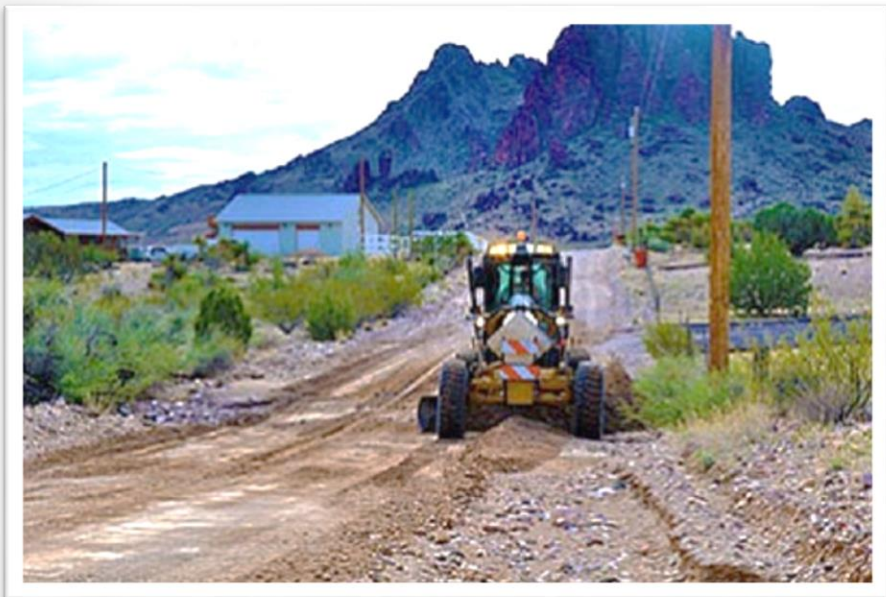


KNOW WHAT'S BELOW. CALL 811 OR CLICK [ARIZONA811.COM](http://ARIZONA811.COM) BEFORE YOU DIG





# Road Maintenance Not Exempt



KNOW WHAT'S BELOW. CALL 811 OR CLICK [ARIZONA811.COM](http://ARIZONA811.COM) BEFORE YOU DIG



# PROPERTY DAMAGE



KNOW WHAT'S BELOW. CALL 811 OR CLICK [ARIZONA811.COM](http://ARIZONA811.COM) BEFORE YOU DIG



# IGNORED PIPELINE MARKERS



KNOW WHAT'S BELOW. CALL 811 OR CLICK [ARIZONA811.COM](http://ARIZONA811.COM) BEFORE YOU DIG



CALL THE  
ARIZONA CORPORATION  
COMMISSION  
PHOENIX OFFICE:

602-262-5601



KNOW WHAT'S BELOW. CALL 811 OR CLICK [ARIZONA811.COM](http://ARIZONA811.COM) BEFORE YOU DIG