

The background features a large, dark blue pipeline curving through the frame. In the lower-left corner, three men wearing hard hats and work clothes are engaged in conversation. In the upper-right corner, there is a close-up of blue and yellow industrial machinery. The overall scene is set against a clear blue sky.

# TRANSWESTERN PIPELINE COMPANY

Winter Preparedness Update  
Arizona Corporation Commission

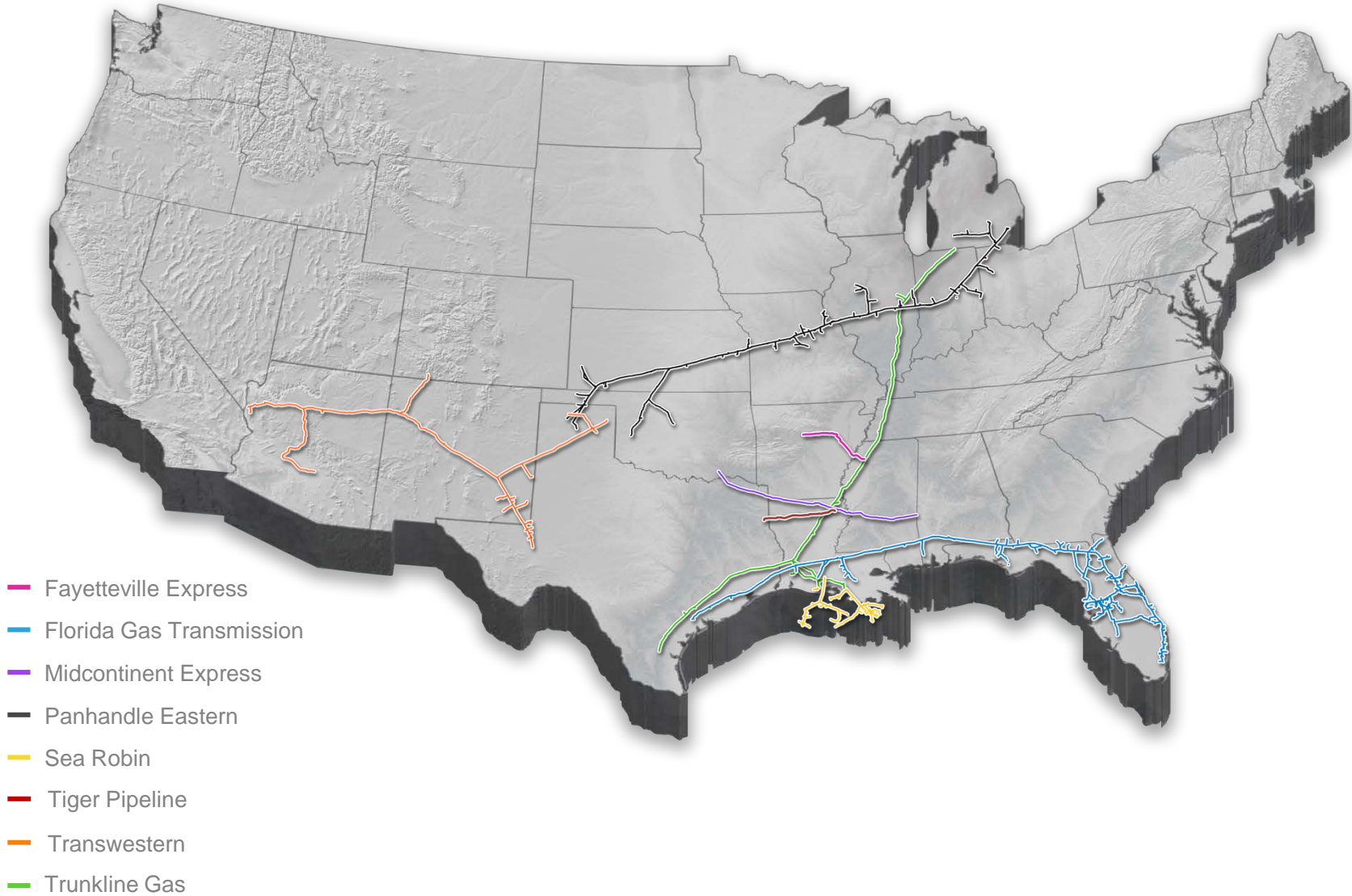
October 21, 2014

The logo for Energy Transfer, consisting of three stylized, overlapping white curved lines.

ENERGY TRANSFER



# ENERGY TRANSFER INTERSTATE PIPELINES





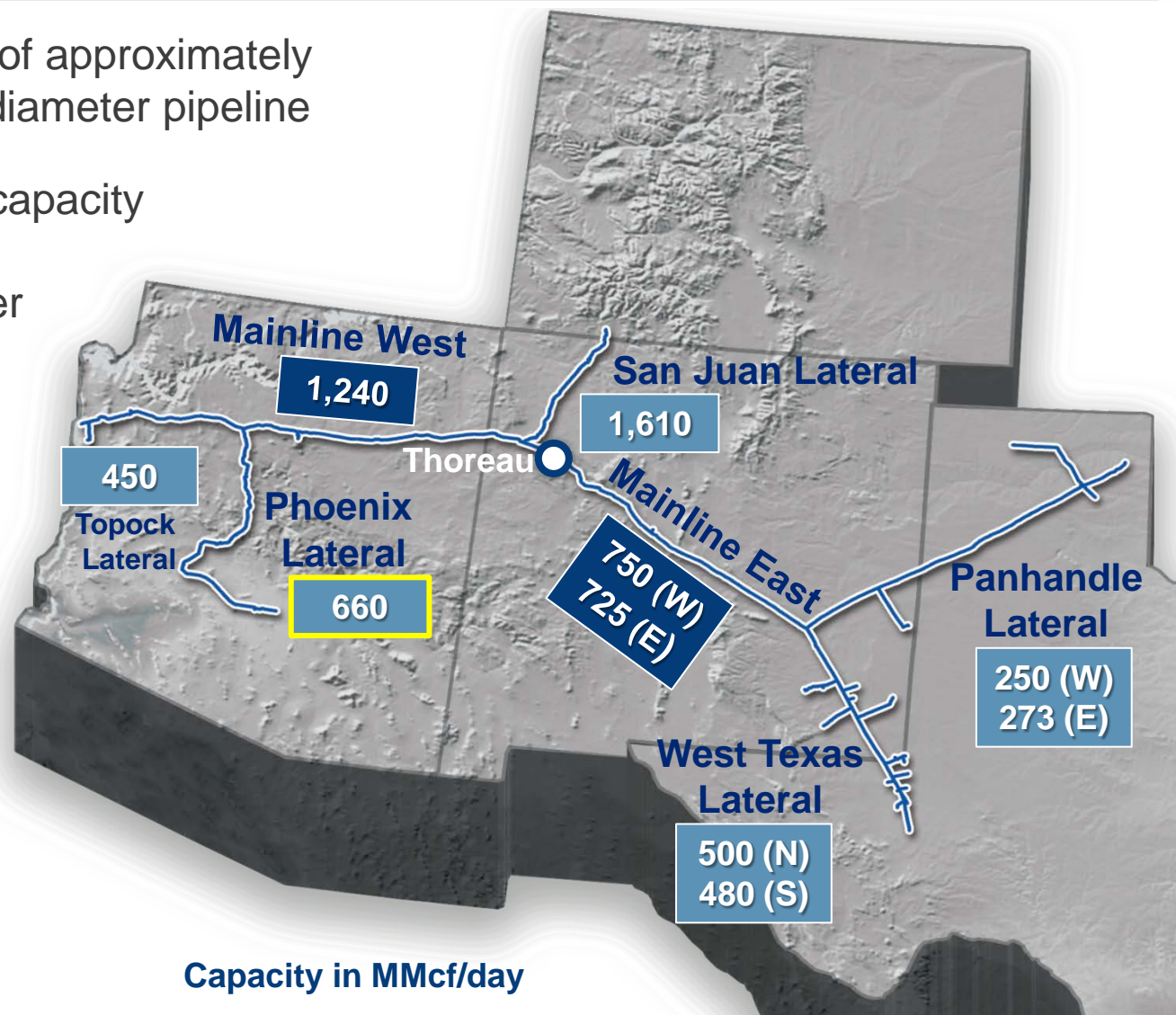
# TRANSWESTERN PIPELINE SYSTEM OVERVIEW

The system consists of approximately 2,600 miles of large diameter pipeline

~ 2.0 Bcf/d delivery capacity

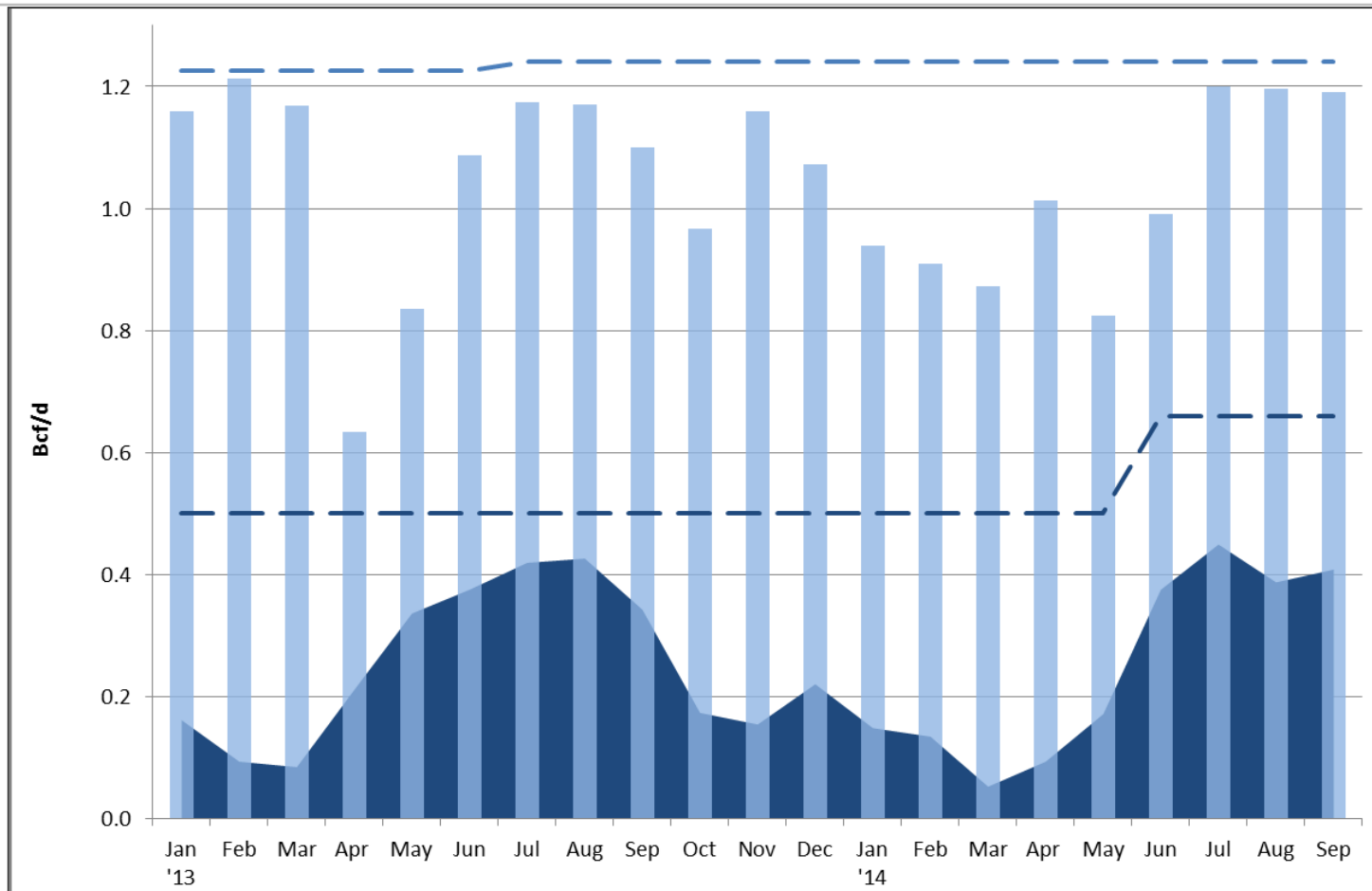
~ 344,000 horsepower

~ 245 delivery points





## WEST AND PHOENIX DELIVERIES CONTINUE TO FLOW AT A HIGH LEVEL



- Phoenix Lateral peak spot
  - 2013: 864 MMcf/d
  - 2014: 852 MMcf/d
- Phoenix Lateral peak daily
  - 2013: 525 MMcf/d
  - 2014: 540 MMcf/d



## TRANSWESTERN CAPACITY

### Mainline West Available capacity (MDt/d) <sup>1</sup>

	2015	2016	2017	2018
July	130	140	183	183
December	116	116	183	183

<sup>1/</sup> Includes capacity subject to Right of First Refusal

### Phoenix Lateral Available capacity (MDt/d) <sup>1,2</sup>

	2015	2016	2017	2018
July	131	131	101	101
December	260	260	260	260

<sup>1/</sup> Includes capacity subject to Right of First Refusal

<sup>2/</sup> Post Phoenix Compression Expansion

# SPRING 2014 MAINTENANCE - COMPLETE



- **Semi-Annual Maintenance**
  - Compressor Stations 1, 2, 3 & 4.
  - Station 1-3 completed March 2014
  - Station 4 completed for April 23<sup>rd</sup>, 2014
  - No impact to shippers
- **Kingman 6-inch Lateral**
  - One day outage coordinated with UNS
  - Added launcher & receiver facilities
  - Smart tool run TBD
- **Phoenix Lateral**
  - Routine meter station maintenance





# FALL 2014 MAINTENANCE

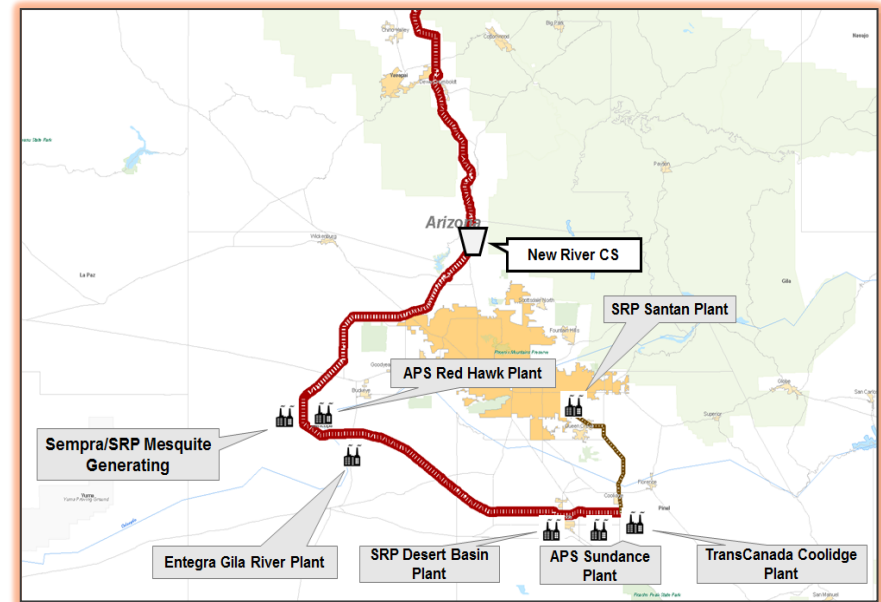
- **Semi-Annual Maintenance**
  - Compressor Stations 2 & 3
  - Gas Days October 16, 2014 – October 19, 2014 (4 days)
  
- **UNS Winter Preparedness Meeting**
  - Occurred on September 17<sup>th</sup>
  
- **SWG Winter Preparedness Meeting**
  - Scheduled for October 22<sup>nd</sup>





# NEW RIVER COMPRESSOR STATION

- In-Service June 1, 2014
- PHX Daily Capacity increased to 660 MMcf/d
- 105,000 of 160,000 MM/d sold firm beginning January 2015
  - Summer 2014 hourly capacity available
  - Prepared to run the unit for hourly needs > 150% utilizing Phoenix lateral-only space under FTS-5 service
- Capable of nearly 1 Bcf spot flow to support plant swings
  - 41,250 Mcf/hr total hourly capability
- 12,000 HP site-rated Compression
- Capex: \$30 MM







# NEW RIVER COMPRESSOR STATION





# NEW RIVER COMPRESSOR STATION





# NEW RIVER COMPRESSOR STATION





## CONCLUSION

---

- Transwestern continues to provide Phoenix with reliable and flexible service
- Phoenix Lateral Compression Expansion met the June 1, 2014 in-service date
- Fall and majority of Spring Maintenance for West of Thoreau segment complete



# TRANSWESTERN PIPELINE COMPANY CONTACTS

**Steven Hearn**

Sr. Director – Marketing & Business Development  
713-989-2427  
Steven.Hearn@energytransfer.com

**Jerry Graves**

Vice President – Gas Control  
713-989-2015  
Jerry.Graves@energytransfer.com

**Randy Lance**

Manager – Operations  
928-565-0777  
Randy.Lance@energytransfer.com