



TRANSWESTERN PIPELINE COMPANY

AN ENERGY TRANSFER COMPANY

Winter Preparedness Update
Arizona Corporation Commission

October 29, 2015

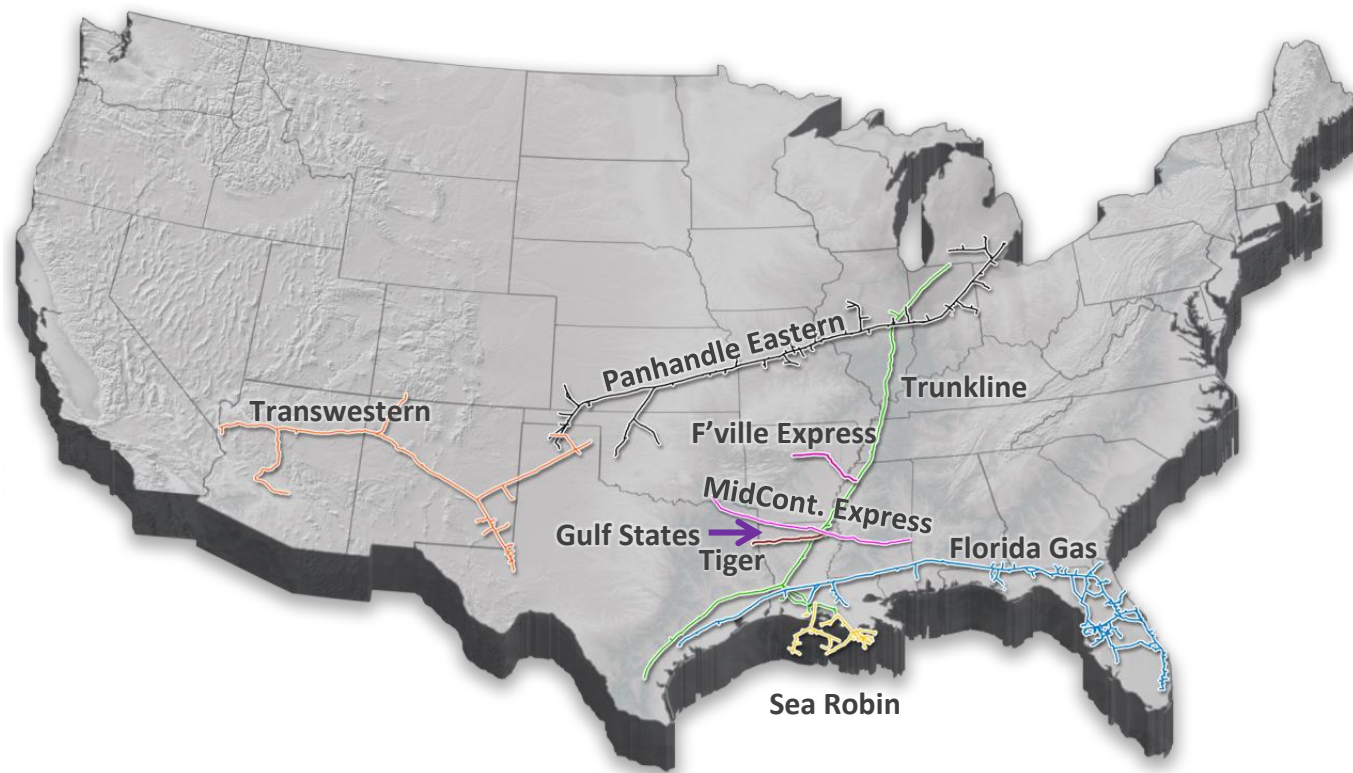




ENERGY TRANSFER INTERSTATE ASSETS

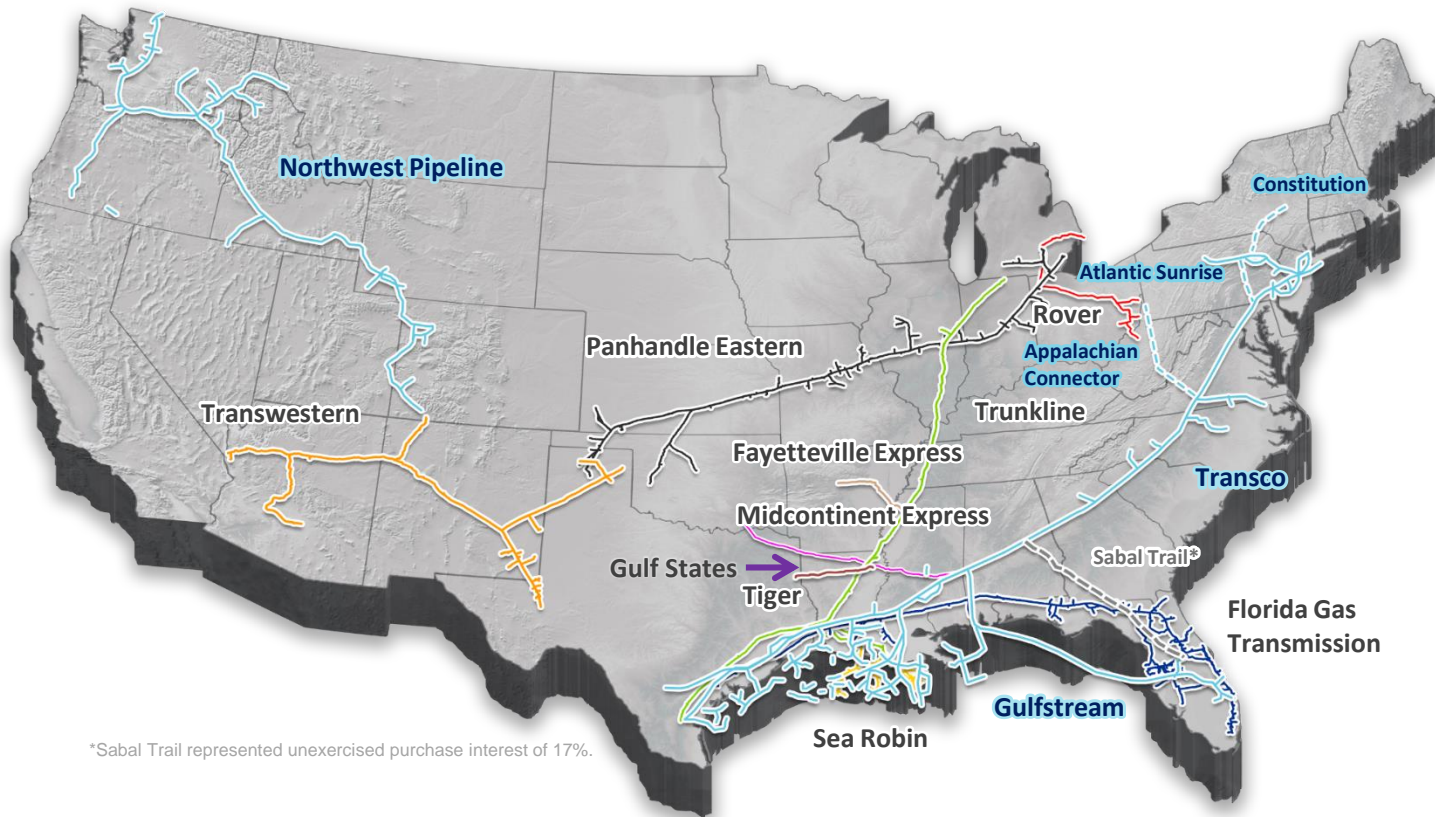
	Miles of Pipeline	Capacity (Bcf/d)	Owned Storage	Ownership
PEPL	6,000	2.8	55.1	100%
TGC*	2,230	1.0	13	100%
TW	2,600	2.0	--	100%
FGT	5,400	3.1	--	50%
SR	1,000	2.3	--	100%
FEP	185	2.0	--	50%
Tiger	195	2.4	--	100%
MEP	500	1.8	--	50%
Gulf States	10	0.2	--	100%

*After pending abandonment.





ENERGY TRANSFER PRO FORMA FOR THE WILLIAMS COMBINATION...



*Sabal Trail represented unexercised purchase interest of 17%.

...MAKING US THE 5TH LARGEST ENERGY COMPANY IN THE WORLD

1

2

3

4

5

ExxonMobil



3



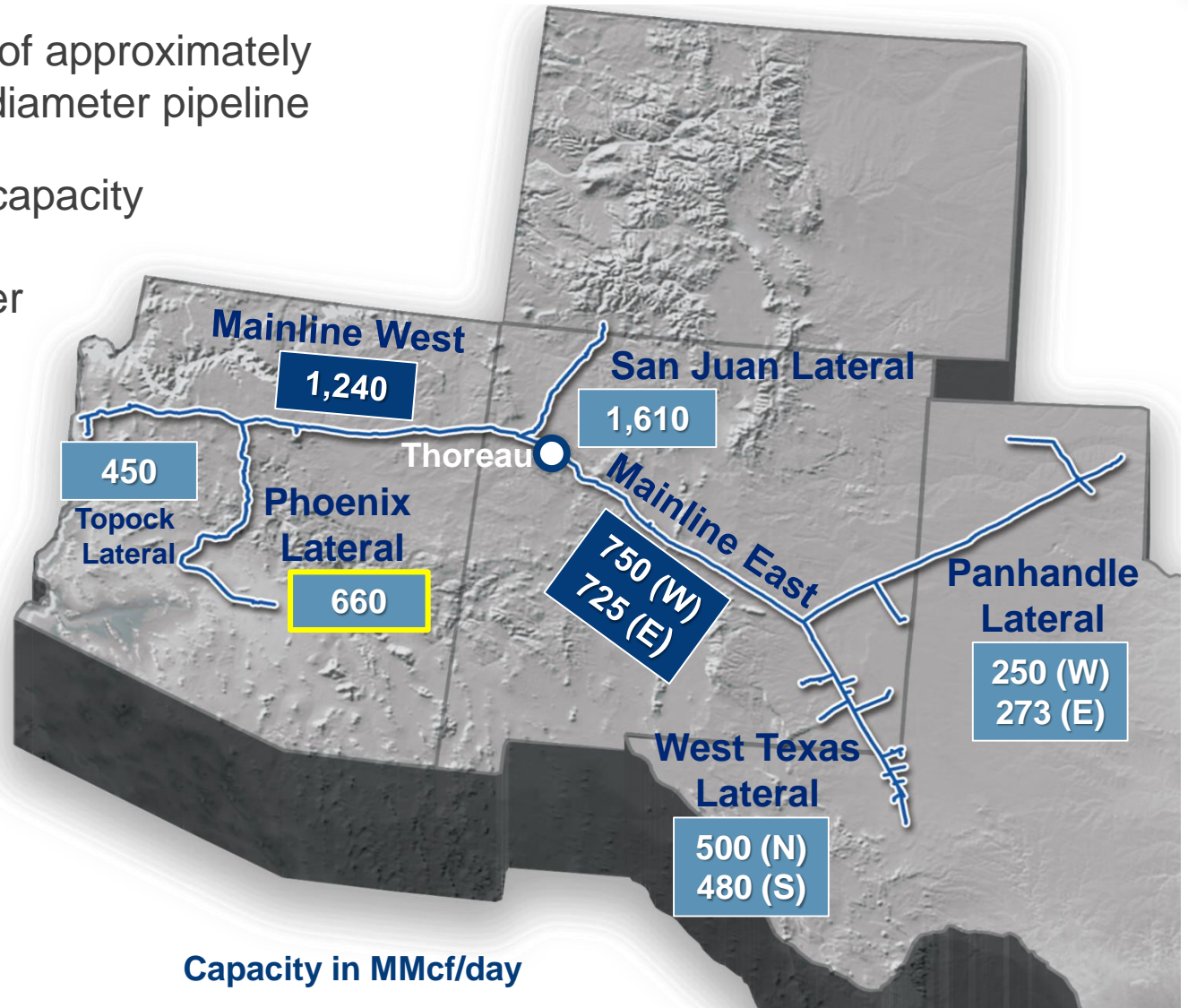
TRANSWESTERN PIPELINE SYSTEM OVERVIEW

The system consists of approximately 2,600 miles of large diameter pipeline

~ 2.0 Bcf/d delivery capacity

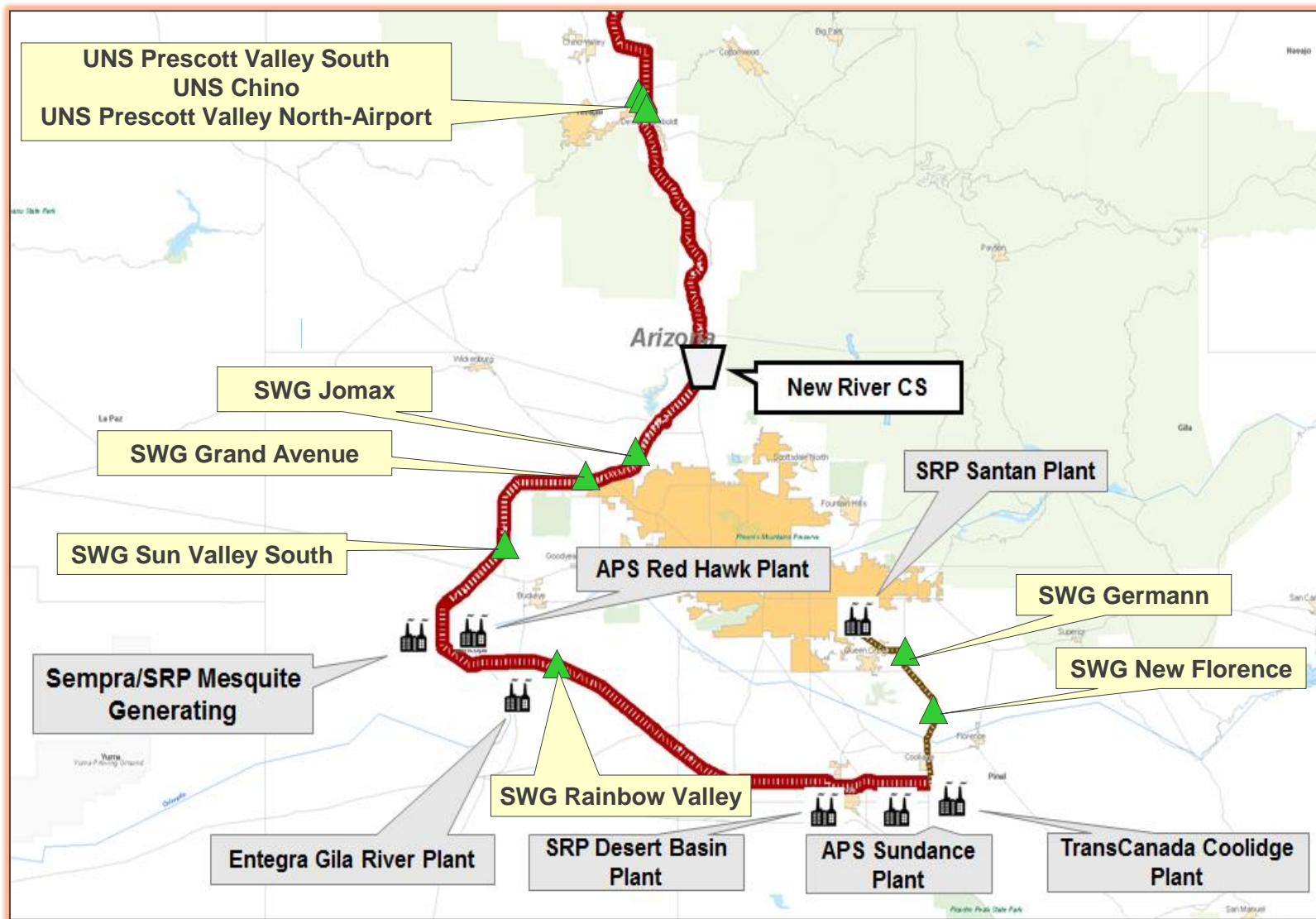
~ 344,000 horsepower

~ 245 delivery points





TRANSWESTERN PHOENIX LATERAL



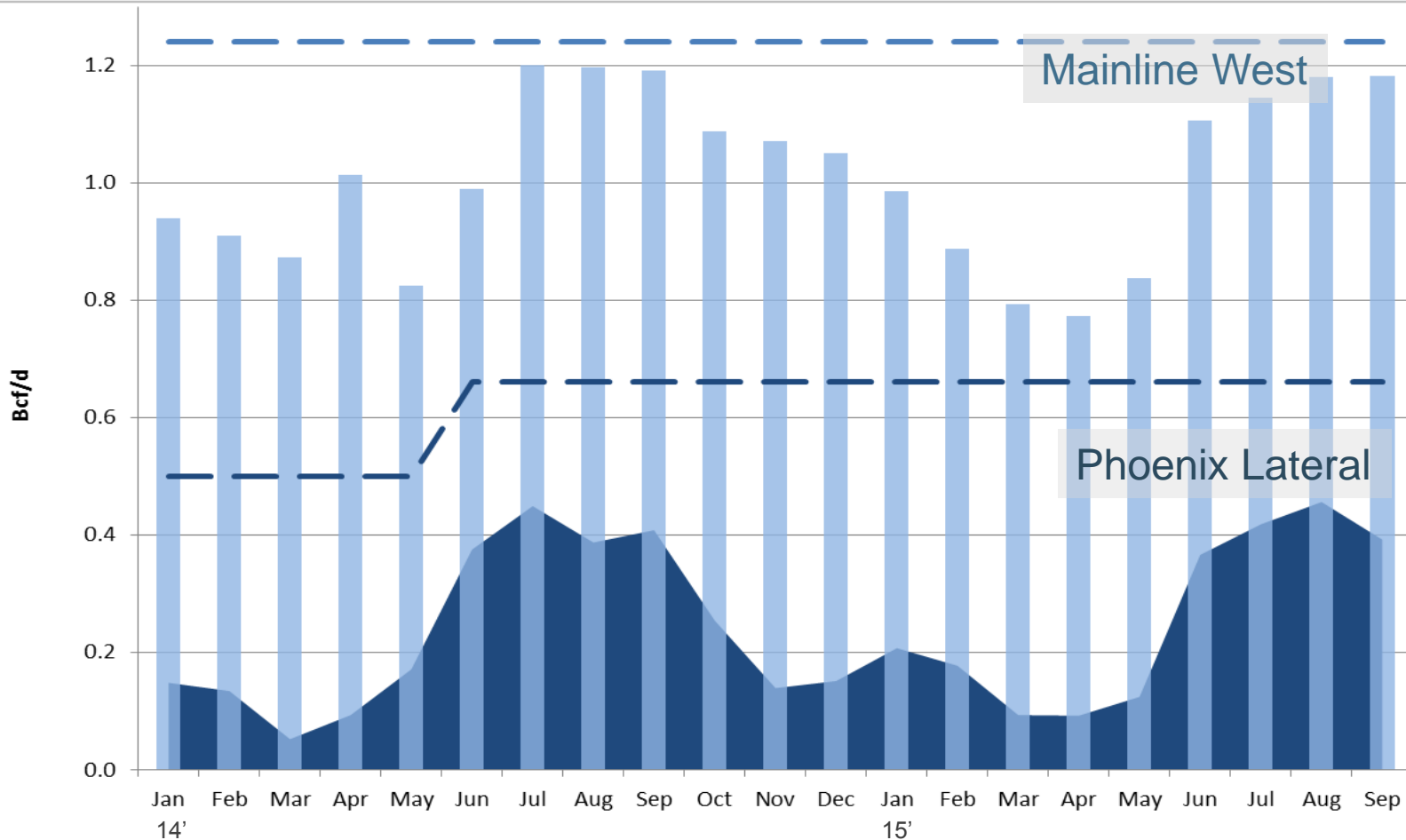


NEW RIVER COMPRESSOR STATION





WEST AND PHOENIX DELIVERIES CONTINUE TO FLOW AT A HIGH LEVEL



- Phoenix Lateral peak spot
 - 2014: 852 MMcf/d
 - 2015: 754 MMcf/d
- Phoenix Lateral peak daily
 - 2014: 540 MMcf/d
 - 2015: 528 MMcf/d

SPRING 2015 MAINTENANCE - COMPLETE

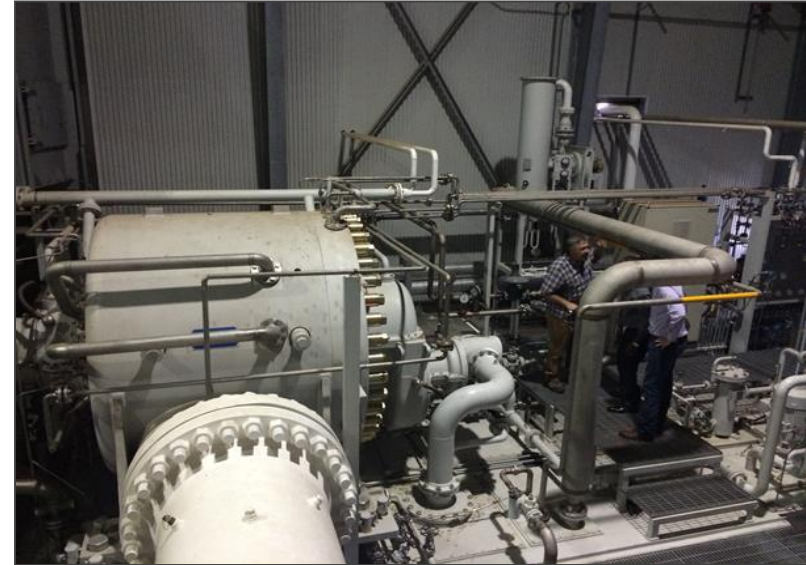


• Semi-Annual Maintenance

- Western Mainline
 - Compressor Stations 1, 2, 3 & 4
 - Completed March 2015
- San Juan Lateral
 - Gallup Station
 - Completed April 2015
- No impact to shippers

• Phoenix Lateral

- Routine meter station maintenance
- Coordinated with Operator
 - APS Red Hawk
 - Gila River
 - SRP Mesquite
 - Arclight Mesquite
 - EPNG East Valley Interconnect
 - APS Sundance
 - TransCanada Coolidge
 - SRP Desert Basin





WINTER 2015 PREPARATIONS

- **Semi-Annual Maintenance**
 - Compressor Stations 1, 2, 3 & 4
 - Gas Days October 13, 2015 – October 29, 2015 (16 days)
- **Phoenix Lateral**
 - Routine meter station maintenance
 - Coordinated with Operator
 - UNS and SWG
- **UNS Winter Preparedness Meeting**
 - Occurred on September 16th
- **SWG Winter Preparedness Meeting**
 - Occurred on October 15th





EMERGENCY COMMUNICATIONS

- EBB Notifications -- <http://twtransfer.energytransfer.com>
- Critical notices posted and emailed to operators and shippers
- 24 Hour Emergency hotline phone number – (866) 999-8975
- Public Affairs media phone number – (214) 599-8755



2014 RATE CASE – RATE AND SERVICE CHANGES

- New Rates/Fuel went into effect April 1, 2015
 - Minimal increases to usage and fuel
- New Services
 - FTS–3
 - Hourly Peaking Service (HPS)
- Operational/Tariff Changes
 - Alert Days
 - Scheduling Priorities
 - Reservation Charge Crediting



CONCLUSION



Spring and Fall Maintenance as well as winter preparation meetings have been completed

Transwestern has added infrastructure and services to increase flexibility

Transwestern continues to provide Phoenix with reliable service



TRANSWESTERN PIPELINE COMPANY CONTACTS

Steven Hearn

Sr. Director – Marketing & Business Development
713-989-2427
Steven.Hearn@energytransfer.com

Kris Kindrick

Marketing Representative
713-989-2406
Kris.Kindrick@energytransfer.com

Jerry Graves

Vice President – Gas Control
713-989-2015
Jerry.Graves@energytransfer.com

Randy Lance

Manager – Operations
928-565-0777
Randy.Lance@energytransfer.com