

# El Paso Natural Gas Pipeline 2018-19 Winter Preparedness

Presentation to the Arizona Corporation Commission

November 8, 2018

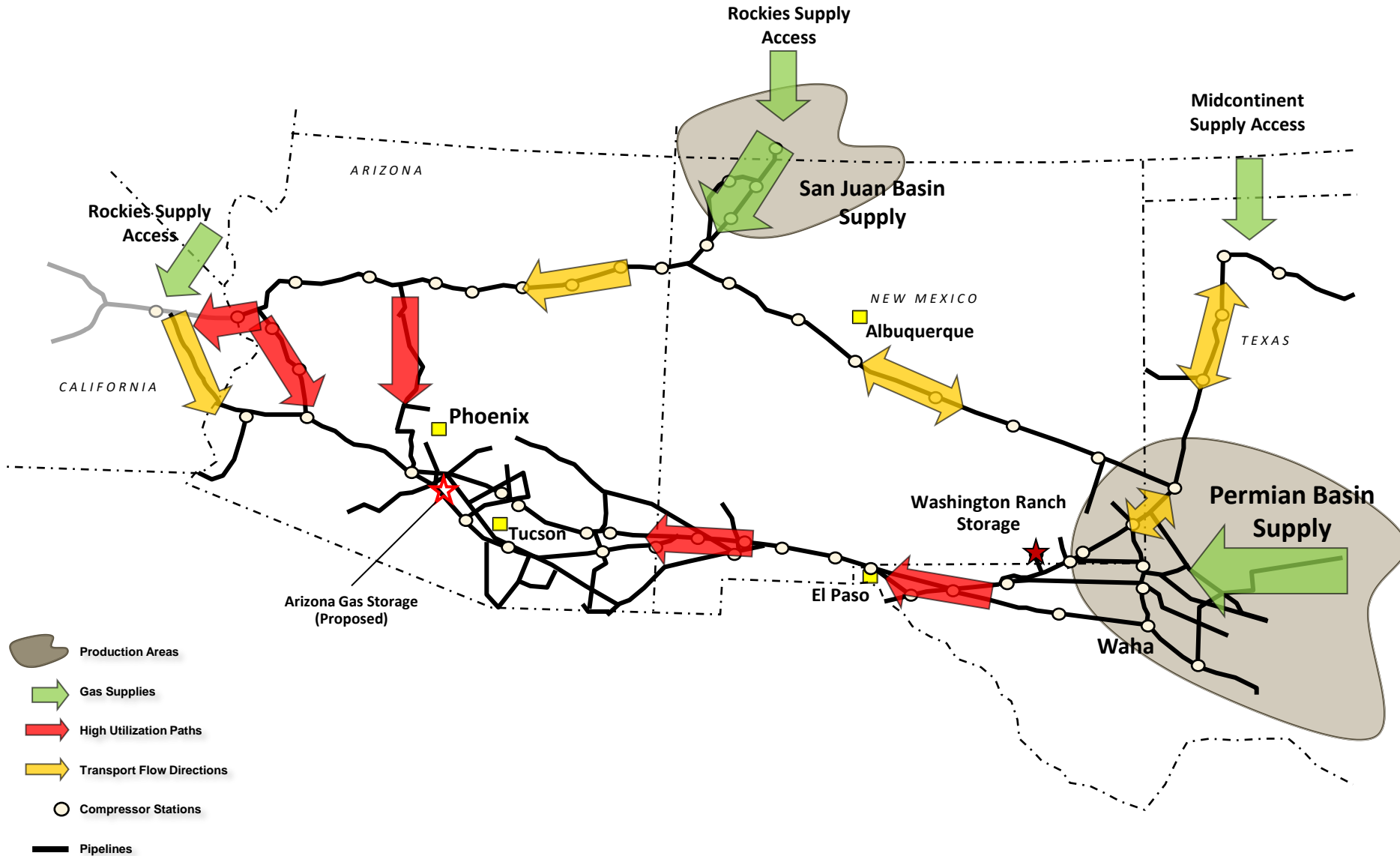
Mark Westhoff

Vice President, Pipeline Management

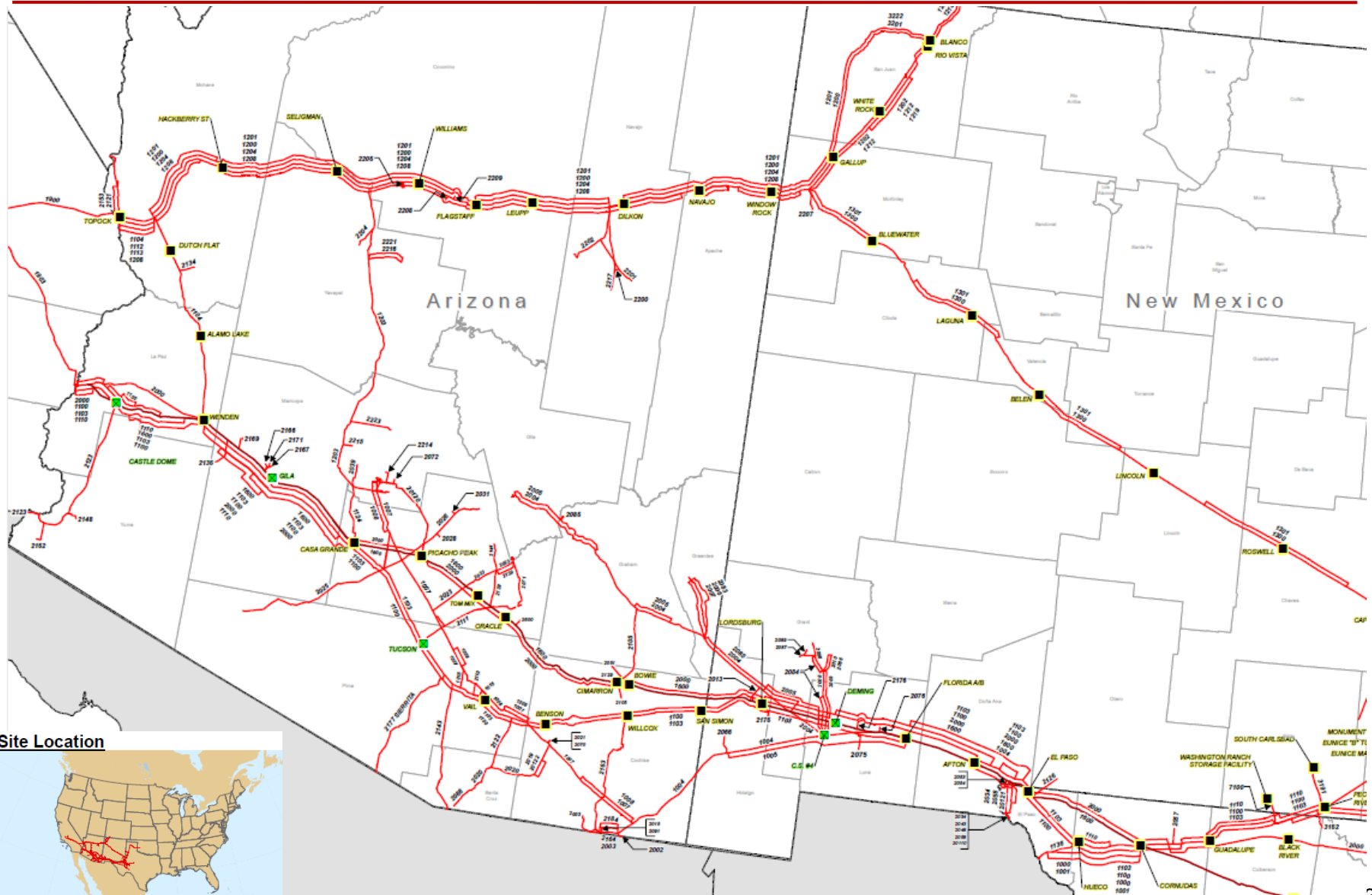
Kinder Morgan West Region Pipelines

# EPNG System Overview

## Supply Locations and Flow Direction

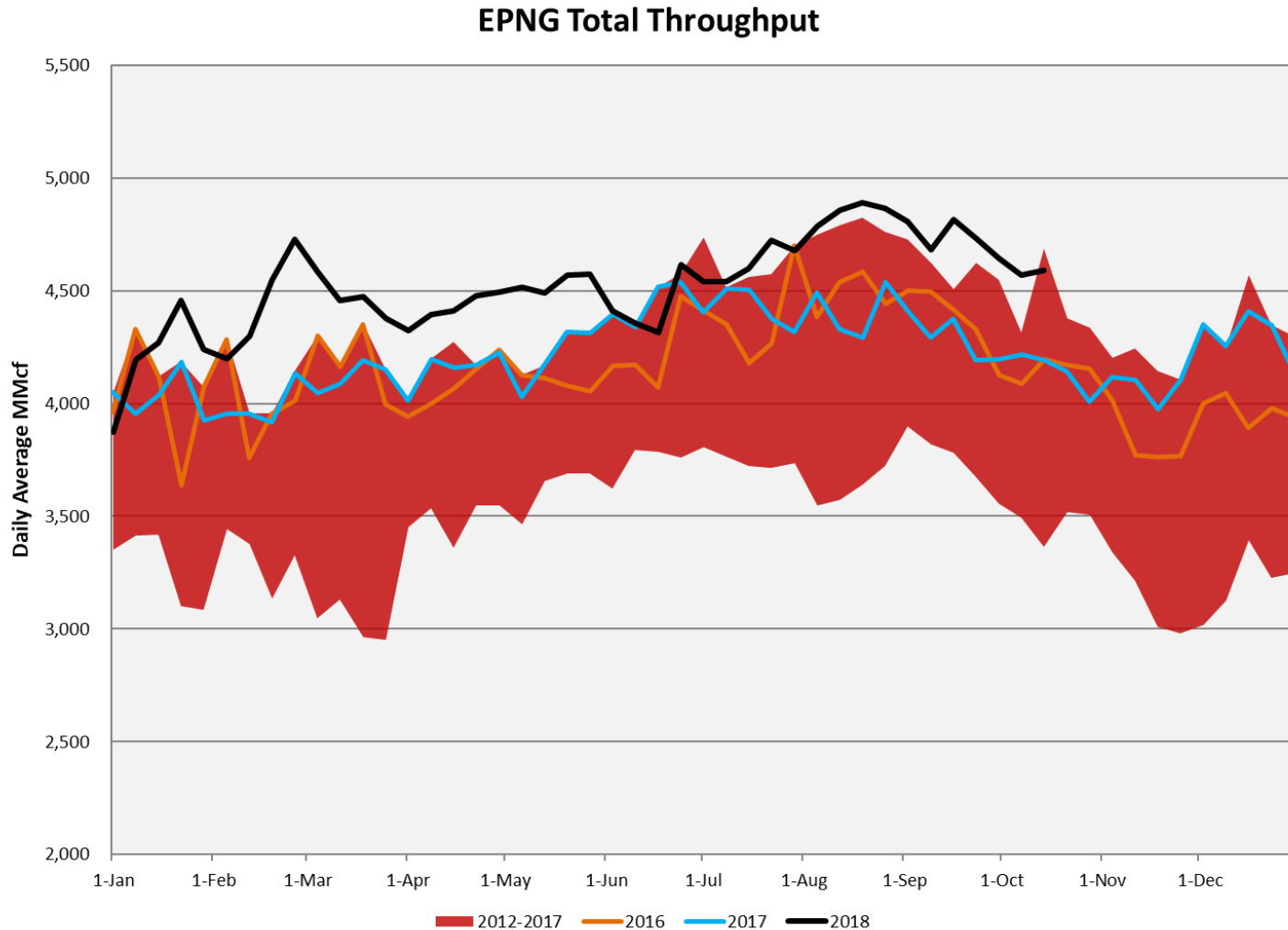


# EPNG Detail: Multiple Mainlines

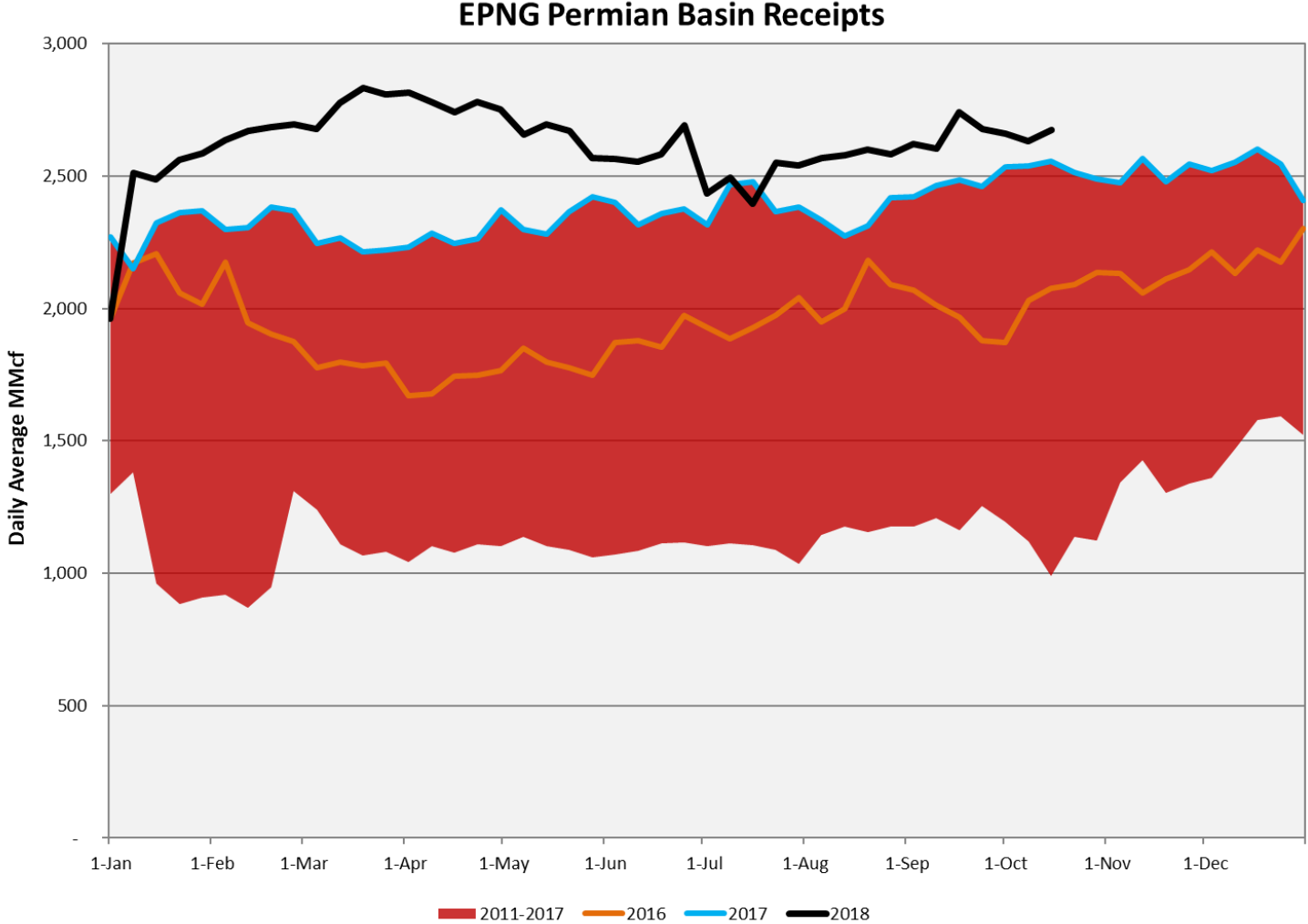


# EPNG Total System

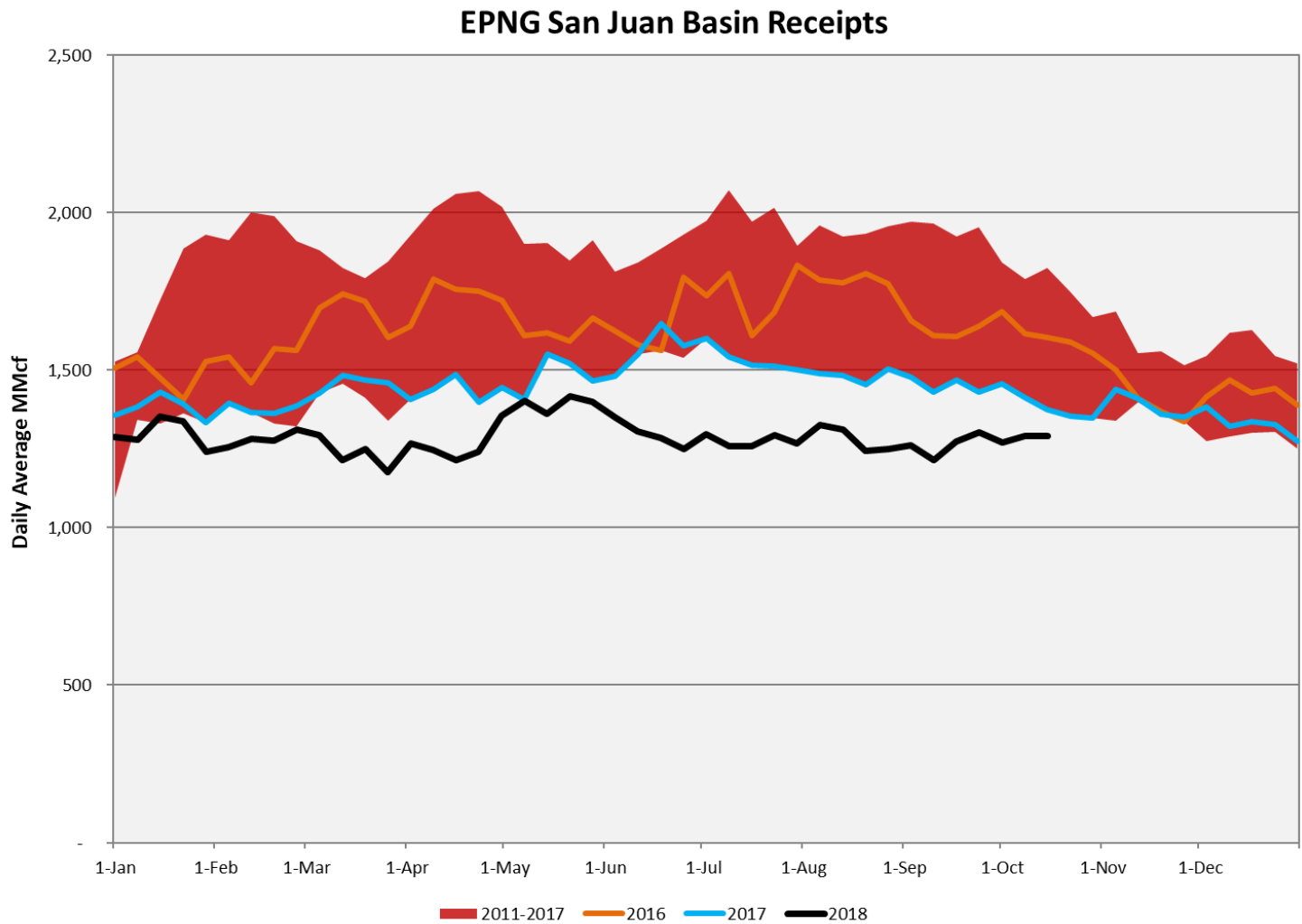
## 2012-2018 Throughput Trends (MMcf/d)



# EPNG Supply Permian Basin

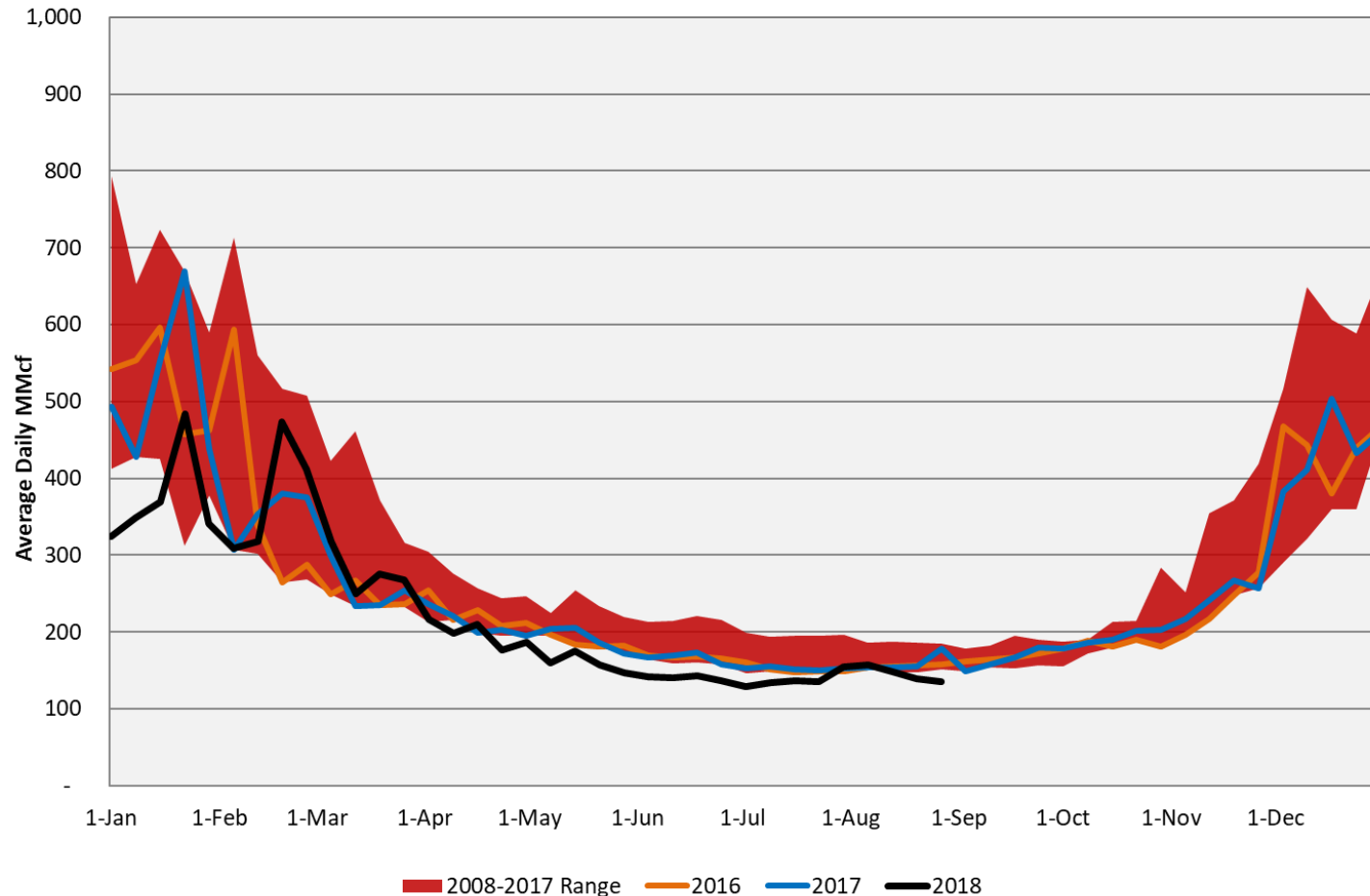


# EPNG Supply San Juan Basin



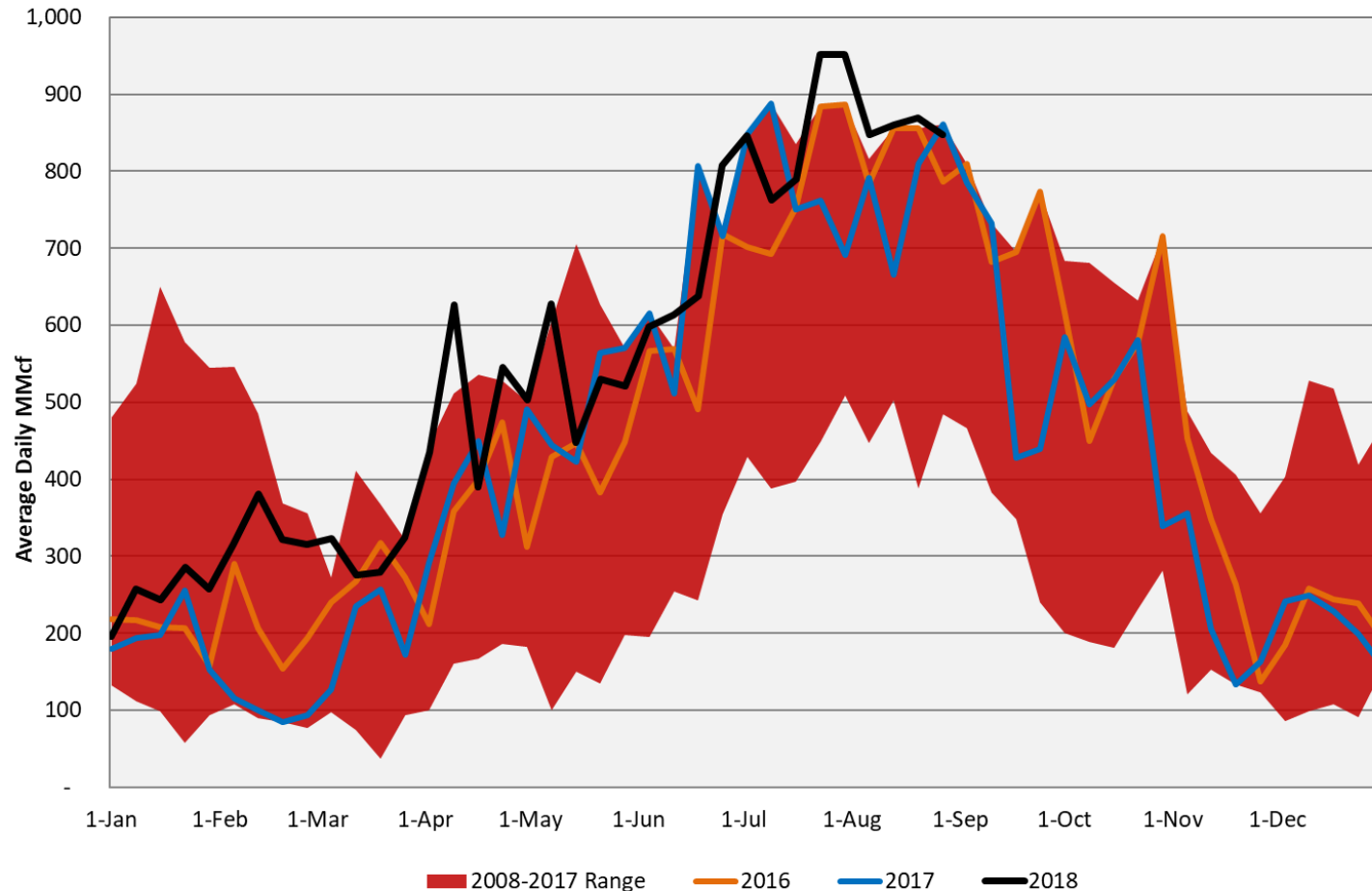
# EPNG Throughput Arizona LDC/Industrial

## Arizona LDC/Industrial Deliveries



# EPNG Throughput Arizona Power Generation

## Arizona Power Generation Deliveries





# Winter Preparedness Plans

---

## ● Staffing

- Gas Control is 24 x 7 x 365.
- Field technicians are on-site or on-call.

## ● Facility preparation

- Facility inspections with focus on weatherproofing.
- Assessment of back-up power needs (existing stand-by generation, rental generators as necessary).
- Maintenance and construction involving key facilities scheduled outside peak demand period.
- Prepare vehicles for cold weather.

## ● Communication and Coordination

- Customer Winter Preparedness Meeting (WebEx/conference call) – October 31, 2018.
- Customer-specific winter preparedness meetings or communications.
- Shipper and Stakeholder Mass Communication via EBB notices and text messages.
- Shipper-Specific Communications.

## ● Operational Response

- Multiple flow paths for supply to reach the market.
- Access to supply area storage: Washington Ranch, Keystone Gas Storage and Merchant Ranch Storage.
- EPNG has developed excellent working relationships with both affiliated and non-affiliated interconnecting pipelines which provide additional layers of contingency management in responding to emergency situations.