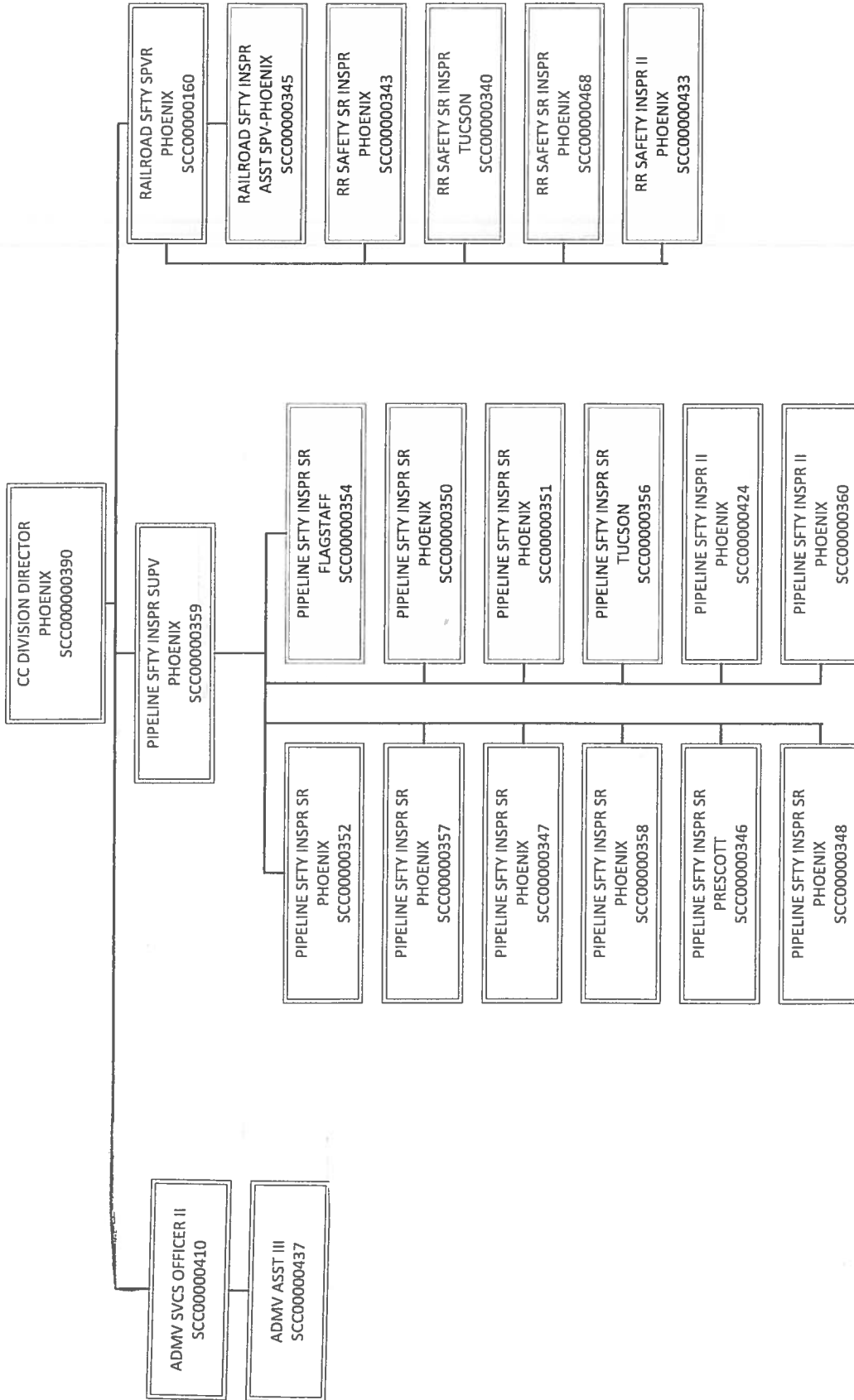


# ARIZONA CORPORATION COMMISSION SAFETY DIVISION



# Program Summary of Expenditures and Budget Request

Agency: CCA Corporation Commission  
 Program: 6 Pipeline Safety

	FY 2014 Actual	FY 2015 Expd. Plan	FY 2016 Fund. Issue	FY 2016 Total
<b>Program Summary</b>				
6-1 Pipeline Safety	1,604.1	1,600.0	0.0	1,600.0
<b>Program Summary Total:</b>	<b>1,604.1</b>	<b>1,600.0</b>	<b>0.0</b>	<b>1,600.0</b>
<b>Expenditure Categories</b>				
0000 FTE Positions	16.0	16.0	0.0	16.0
6000 Personal Services	936.1	938.1	0.0	938.1
6100 Employee Related Expenses	386.3	355.0	0.0	355.0
6200 Prof. And Outside Services	1.6	2.0	0.0	2.0
6500 Travel In-State	126.5	140.0	0.0	140.0
6600 Travel Out of State	27.9	40.0	0.0	40.0
6700 Food (Library for Universities)	0.0	0.0	0.0	0.0
6800 Aid to Organizations and Individuals	0.0	0.0	0.0	0.0
7000 Other Operating Expenses	123.5	124.9	0.0	124.9
8000 Equipment	2.2	0.0	0.0	0.0
8100 Capital Outlay	0.0	0.0	0.0	0.0
8600 Debt Service	0.0	0.0	0.0	0.0
9000 Cost Allocation	0.0	0.0	0.0	0.0
9100 Transfers	0.0	0.0	0.0	0.0
<b>Expenditure Categories Total:</b>	<b>1,604.1</b>	<b>1,600.0</b>	<b>0.0</b>	<b>1,600.0</b>
<b>Fund Source</b>				
<b>Appropriated Funds</b>				
2172-A Utility Regulation Revolving (Appropriated)	1,215.3	900.0	0.0	900.0
<b>Non-Appropriated Funds</b>				
2000-N Federal Grant (Non-Appropriated)	388.8	700.0	0.0	700.0
<b>Fund Source Total:</b>	<b>1,604.1</b>	<b>1,600.0</b>	<b>0.0</b>	<b>1,600.0</b>

# Program Group Summary of Expenditures and Budget Request for Selected Funds

Agency: CCA Corporation Commission  
 Program: 6 Pipeline Safety

	FY 2014 Actual	FY 2015 Expd. Plan	FY 2016 Fund. Issue	FY 2016 Total
--	-------------------	-----------------------	------------------------	------------------

Fund: 2000-N Federal Grant (Non-Appropriated)

**Program Expenditures**

**COST CENTER/PROGRAM BUDGET UNIT**

6-1 Pipeline Safety	388.8	700.0	0.0	700.0
<b>Total</b>	<b>388.8</b>	<b>700.0</b>	<b>0.0</b>	<b>700.0</b>

**Non-Appropriated Funding**

**Expenditure Categories**

FTE Positions	1.0	1.0	0.0	1.0
Personal Services	124.1	268.7	0.0	268.7
Employee Related Expenses	26.8	124.4	0.0	124.4
Prof. And Outside Services	1.6	2.0	0.0	2.0
Travel In-State	100.6	140.0	0.0	140.0
Travel Out of State	27.0	40.0	0.0	40.0
Food (Library for Universities)	0.0	0.0	0.0	0.0
Aid to Organizations and Individuals	0.0	0.0	0.0	0.0
Other Operating Expenses	106.5	124.9	0.0	124.9
Equipment	2.2	0.0	0.0	0.0
Capital Outlay	0.0	0.0	0.0	0.0
Debt Service	0.0	0.0	0.0	0.0
Cost Allocation	0.0	0.0	0.0	0.0
Transfers	0.0	0.0	0.0	0.0

**Expenditure Categories Total:**

**Fund 2000-N Total:**

	388.8	700.0	0.0	700.0
	388.8	700.0	0.0	700.0

# Program Group Summary of Expenditures and Budget Request for Selected Funds

Agency: CCA Corporation Commission  
 Program: 6 Pipeline Safety

FY 2014      FY 2015      FY 2016      FY 2016  
 Actual      Expd. Plan      Fund. Issue      Total

Fund: 2172-A Utility Regulation Revolving (Appropriated)

**Program Expenditures**

COST CENTER/PROGRAM BUDGET UNIT

6-1 Pipeline Safety	1,215.3	900.0	0.0	900.0
Total	1,215.3	900.0	0.0	900.0

**Appropriated Funding**

**Expenditure Categories**

FTE Positions	15.0	15.0	0.0	15.0
Personal Services	812.0	669.4	0.0	669.4
Employee Related Expenses	359.5	230.6	0.0	230.6
Prof. And Outside Services	0.0	0.0	0.0	0.0
Travel In-State	25.9	0.0	0.0	0.0
Travel Out of State	0.9	0.0	0.0	0.0
Food (Library for Universities)	0.0	0.0	0.0	0.0
Aid to Organizations and Individuals	0.0	0.0	0.0	0.0
Other Operating Expenses	17.0	0.0	0.0	0.0
Equipment	0.0	0.0	0.0	0.0
Capital Outlay	0.0	0.0	0.0	0.0
Debt Service	0.0	0.0	0.0	0.0
Cost Allocation	0.0	0.0	0.0	0.0
Transfers	0.0	0.0	0.0	0.0

**Expenditure Categories Total:**

	1,215.3	900.0	0.0	900.0
<b>Fund 2172-A Total:</b>	<b>1,215.3</b>	<b>900.0</b>	<b>0.0</b>	<b>900.0</b>

**Program 6 Total:**

	1,604.1	1,600.0	0.0	1,600.0
--	---------	---------	-----	---------

# Program Budget Unit Summary of Expenditures and Budget Request for All Funds

Agency: CCA Corporation Commission  
 Program: 6-1 Pipeline Safety

Expenditure Categories	FY 2014	FY 2015	FY 2016	FY 2016
	Actual	Expd. Plan	Fund. Issue	Total
0000 FTE	16.0	16.0	0.0	16.0
6000 Personal Services	936.1	938.1	0.0	938.1
6100 Employee Related Expenses	386.3	355.0	0.0	355.0
6200 Prof. And Outside Services	1.6	2.0	0.0	2.0
6500 Travel In-State	126.5	140.0	0.0	140.0
6600 Travel Out of State	27.9	40.0	0.0	40.0
6700 Food (Library for Universities)	0.0	0.0	0.0	0.0
6800 Aid to Organizations and Individuals	0.0	0.0	0.0	0.0
7000 Other Operating Expenses	123.5	124.9	0.0	124.9
8000 Equipment	2.2	0.0	0.0	0.0
8100 Capital Outlay	0.0	0.0	0.0	0.0
8600 Debt Service	0.0	0.0	0.0	0.0
9000 Cost Allocation	0.0	0.0	0.0	0.0
9100 Transfers	0.0	0.0	0.0	0.0
<b>Expenditure Categories Total:</b>	<b>1,604.1</b>	<b>1,600.0</b>	<b>0.0</b>	<b>1,600.0</b>
<b>Fund Source</b>				
<b>Appropriated Funds</b>				
2172-A Utility Regulation Revolving (Appropriated)	1,215.3	900.0	0.0	900.0
<b>Non-Appropriated Funds</b>				
2000-N Federal Grant (Non-Appropriated)	388.8	700.0	0.0	700.0
<b>Fund Source Total:</b>	<b>1,604.1</b>	<b>1,600.0</b>	<b>0.0</b>	<b>1,600.0</b>

All dollars are presented in thousands (not FTE).

# Program Budget Unit Summary of Expenditures and Budget Request for Selected Funds

Agency: CCA Corporation Commission

	FY 2014	FY 2015	FY 2016	FY 2016
	Actual	Expd. Plan	Fund. Issue	Total

Program: 6-1 Pipeline Safety

Fund: 2000-N Federal Grant Fund

**Non-Appropriated**

0000 FTE	1.0	1.0	0.0	1.0
6000 Personal Services	124.1	268.7	0.0	268.7
6100 Employee Related Expenses	26.8	124.4	0.0	124.4
6200 Prof. And Outside Services	1.6	2.0	0.0	2.0
6500 Travel In-State	100.6	140.0	0.0	140.0
6600 Travel Out of State	27.0	40.0	0.0	40.0
6700 Food (Library for Universities)	0.0	0.0	0.0	0.0
6800 Aid to Organizations and Individuals	0.0	0.0	0.0	0.0
7000 Other Operating Expenses	106.5	124.9	0.0	124.9
8000 Equipment	2.2	0.0	0.0	0.0
8100 Capital Outlay	0.0	0.0	0.0	0.0
8600 Debt Service	0.0	0.0	0.0	0.0
9000 Cost Allocation	0.0	0.0	0.0	0.0
9100 Transfers	0.0	0.0	0.0	0.0
<b>Non-Appropriated Total:</b>	<b>388.8</b>	<b>700.0</b>	<b>0.0</b>	<b>700.0</b>

Fund Total:

Fund: 2172-A Utility Regulation Revolving Fund

**Appropriated**

0000 FTE	15.0	15.0	0.0	15.0
6000 Personal Services	812.0	669.4	0.0	669.4
6100 Employee Related Expenses	359.5	230.6	0.0	230.6
6200 Prof. And Outside Services	0.0	0.0	0.0	0.0
6500 Travel In-State	25.9	0.0	0.0	0.0
6600 Travel Out of State	0.9	0.0	0.0	0.0
6700 Food (Library for Universities)	0.0	0.0	0.0	0.0
6800 Aid to Organizations and Individuals	0.0	0.0	0.0	0.0
7000 Other Operating Expenses	17.0	0.0	0.0	0.0
8000 Equipment	0.0	0.0	0.0	0.0
8100 Capital Outlay	0.0	0.0	0.0	0.0

# Program Budget Unit Summary of Expenditures and Budget Request for Selected Funds

Agency: CCA Corporation Commission

FY 2014	FY 2015	FY 2016	FY 2016
Actual	Expd. Plan	Fund. Issue	Total

Program: 6-1 Pipeline Safety

Fund: 2172-A Utility Regulation Revolving Fund

**Appropriated**

8600 Debt Service	0.0	0.0	0.0	0.0	0.0
9000 Cost Allocation	0.0	0.0	0.0	0.0	0.0
9100 Transfers	0.0	0.0	0.0	0.0	0.0
<b>Appropriated Total:</b>	<b>1,215.3</b>	<b>900.0</b>	<b>0.0</b>	<b>0.0</b>	<b>900.0</b>
<b>Fund Total:</b>	<b>1,215.3</b>	<b>900.0</b>	<b>0.0</b>	<b>0.0</b>	<b>900.0</b>
<b>Program Total For Selected Funds:</b>	<b>1,604.1</b>	<b>1,600.0</b>	<b>0.0</b>	<b>0.0</b>	<b>1,600.0</b>

## Program Expenditure Schedule

<b>Agency:</b>	CCA Corporation Commission
<b>Program:</b>	6-1 Pipeline Safety

Expenditure Category	FY 2014 Actual	FY 2015 Expd. Plan
<b>FTE Positions</b>		
FTE	16.0	16.0
<b>Expenditure Category Total</b>	<b>16.0</b>	<b>16.0</b>
<b>Fund Source</b>		
<b>Appropriated</b>		
2172-A Utility Regulation Revolving (Appropriated)	15.0	15.0
	<b>15.0</b>	<b>15.0</b>
<b>Non-Appropriated</b>		
2000-N Federal Grant (Non-Appropriated)	1.0	1.0
	<b>1.0</b>	<b>1.0</b>
<b>Fund Source Total</b>	<b>16.0</b>	<b>16.0</b>

Expenditure Category	FY 2014 Actual	FY 2015 Expd. Plan
<b>Personal Services</b>		
Personal Services	936.1	938.1
Boards and Commissions	0.0	0.0
Uniform Allowance	0.0	0.0
Retention	0.0	0.0
<b>Expenditure Category Total</b>	<b>936.1</b>	<b>938.1</b>
<b>Fund Source</b>		
<b>Appropriated</b>		
2172-A Utility Regulation Revolving (Appropriated)	812.0	669.4
	<b>812.0</b>	<b>669.4</b>
<b>Non-Appropriated</b>		
2000-N Federal Grant (Non-Appropriated)	124.1	268.7
	<b>124.1</b>	<b>268.7</b>
<b>Fund Source Total</b>	<b>936.1</b>	<b>938.1</b>

Expenditure Category	FY 2014 Actual	FY 2015 Expd. Plan
<b>Employee Related Expenses</b>		
Employee Related Expenses	386.3	355.0
<b>Expenditure Category Total</b>	<b>386.3</b>	<b>355.0</b>
<b>Fund Source</b>		
<b>Appropriated</b>		
2172-A Utility Regulation Revolving (Appropriated)	359.5	230.6
	<b>359.5</b>	<b>230.6</b>
<b>Non-Appropriated</b>		
2000-N Federal Grant (Non-Appropriated)	26.8	124.4
	<b>26.8</b>	<b>124.4</b>
<b>Fund Source Total</b>	<b>386.3</b>	<b>355.0</b>

Expenditure Category	FY 2014 Actual	FY 2015 Expd. Plan
<b>Professional &amp; Outside Services</b>		
Financial Services from Other State Agy	0.0	0.0
External Investment Services	0.0	0.0
Other External Financial Services	0.0	0.0



## Program Expenditure Schedule

Agency: CCA Corporation Commission

Program: 6-1 Pipeline Safety

Expenditure Category	FY 2014 Actual	FY 2015 Expd. Plan
<b>Professional &amp; Outside Services</b>		
Attorney General Legal Services	0.0	0.0
External Legal Services	1.6	2.0
Preliminary Engineering	0.0	0.0
Construction Engineering	0.0	0.0
Other Design	0.0	0.0
Temporary Agency Services	0.0	0.0
Hospital Services	0.0	0.0
Other Medical Services	0.0	0.0
Institutional Care	0.0	0.0
Education & Training	0.0	0.0
Non-Employee Travel	0.0	0.0
Other Professional & Outside Services	0.0	0.0
<b>Expenditure Category Total</b>	<b>1.6</b>	<b>2.0</b>

Fund Source		
<b>Non-Appropriated</b>		
2000-N Federal Grant (Non-Appropriated)	1.6	2.0
<b>Fund Source Total</b>	<b>1.6</b>	<b>2.0</b>

Expenditure Category	FY 2014 Actual	FY 2015 Expd. Plan
<b>Travel In-State</b>		
Travel In-State	126.5	140.0
<b>Expenditure Category Total</b>	<b>126.5</b>	<b>140.0</b>

Fund Source		
<b>Appropriated</b>		
2172-A Utility Regulation Revolving (Appropriated)	25.9	0.0
<b>Non-Appropriated</b>		
2000-N Federal Grant (Non-Appropriated)	100.6	140.0
<b>Fund Source Total</b>	<b>126.5</b>	<b>140.0</b>

Expenditure Category	FY 2014 Actual	FY 2015 Expd. Plan
<b>Travel Out-of-State</b>		
Travel Out of State	27.9	40.0
<b>Expenditure Category Total</b>	<b>27.9</b>	<b>40.0</b>

Fund Source		
<b>Appropriated</b>		
2172-A Utility Regulation Revolving (Appropriated)	0.9	0.0
<b>Non-Appropriated</b>		
2000-N Federal Grant (Non-Appropriated)	27.0	40.0
<b>Fund Source Total</b>	<b>27.9</b>	<b>40.0</b>

# Program Expenditure Schedule

Agency: CCA Corporation Commission

Program: 6-1 Pipeline Safety

Expenditure Category	FY 2014 Actual	FY 2015 Expd. Plan
<b>Food (Library for Universities)</b>		
Food (Library for Universities)	0.0	0.0
<b>Expenditure Category Total</b>	<b>0.0</b>	<b>0.0</b>

Expenditure Category	FY 2014 Actual	FY 2015 Expd. Plan
<b>Aid to Organizations &amp; Individuals</b>		
Aid to Organizations and Individuals	0.0	0.0
<b>Expenditure Category Total</b>	<b>0.0</b>	<b>0.0</b>

Expenditure Category	FY 2014 Actual	FY 2015 Expd. Plan
<b>Other Operating Expenditures</b>		
Insurance & Related Charges	0.0	0.0
Information Technology Services	35.9	37.0
Utilities	0.0	0.0
Non-Building or Land Rent	0.0	0.0
Building Rent Charges to State Agencies	2.0	2.0
COP Building Rent Charges to State Agencies	0.0	0.0
Rental of Land & Buildings	60.0	62.0
Interest Payments	0.0	0.0
Internal Acct, Budgeting and Financial Svcs.	0.0	0.0
Payments for Internal Services	0.0	0.0
Repair & Maintenance	1.3	1.5
Software Support and Maintenance	0.0	0.0
Operating Supplies	11.2	11.9
Resale Supplies	0.0	0.0
Sales of Assets	0.0	0.0
Conference, Education & Training	9.9	9.0
Advertising	0.0	0.0
Printing & Photography	0.4	0.0
Postage & Delivery	1.6	1.5
Miscellaneous Operating	1.2	0.0
Depreciation Expense	0.0	0.0
<b>Expenditure Category Total</b>	<b>123.5</b>	<b>124.9</b>

Fund Source	FY 2014 Actual	FY 2015 Expd. Plan
<b>Appropriated</b>		
2172-A Utility Regulation Revolving (Appropriated)	17.0	0.0
	<b>17.0</b>	<b>0.0</b>
<b>Non-Appropriated</b>		
2000-N Federal Grant (Non-Appropriated)	106.5	124.9
	<b>106.5</b>	<b>124.9</b>
<b>Fund Source Total</b>	<b>123.5</b>	<b>124.9</b>

Expenditure Category	FY 2014 Actual	FY 2015 Expd. Plan
<b>Equipment</b>		
Vehicles - Capital Leases	0.0	0.0
Furniture - Capital Leases	0.0	0.0

# Program Expenditure Schedule

Agency: CCA Corporation Commission

Program: 6-1 Pipeline Safety

Expenditure Category	FY 2014 Actual	FY 2015 Expd. Plan
<b>Equipment</b>		
EDP Equipment - Mainframe - Capital Leases	0.0	0.0
EDP Equipment - Midrange - Capital Leases	0.0	0.0
EDP Equipment - PCs/LAN - Capital Leases	0.0	0.0
Telecommunication Equipment - Capital Leases	0.0	0.0
Other Equipment - Capital Leases	0.0	0.0
Capital Equipment Purchases	0.0	0.0
Vehicles - Non-Capital	0.0	0.0
Furniture - Non-Capital	0.0	0.0
EDP Equipment - Mainframe - Non-Capital	0.0	0.0
EDP Equipment - Midrange - Non-Capital	0.0	0.0
EDP Equipment - PCs/LAN - Non-Capital	0.0	0.0
Telecommunication Equipment - Non Capital	0.0	0.0
Other Equipment - Non-Capital	0.0	0.0
Non-Capitalized Software	2.2	0.0
<b>Expenditure Category Total</b>	<b>2.2</b>	<b>0.0</b>

Fund Source	FY 2014 Actual	FY 2015 Expd. Plan
<b>Non-Appropriated</b>		
2000-N Federal Grant (Non-Appropriated)	2.2	0.0
<b>Fund Source Total</b>	<b>2.2</b>	<b>0.0</b>

Expenditure Category	FY 2014 Actual	FY 2015 Expd. Plan
<b>Capital Outlay</b>		
Capital Outlay	0.0	0.0
<b>Expenditure Category Total</b>	<b>0.0</b>	<b>0.0</b>

Expenditure Category	FY 2014 Actual	FY 2015 Expd. Plan
<b>Debt Services</b>		
Debt Service	0.0	0.0
<b>Expenditure Category Total</b>	<b>0.0</b>	<b>0.0</b>

Expenditure Category	FY 2014 Actual	FY 2015 Expd. Plan
<b>Cost Allocation</b>		
Cost Allocation	0.0	0.0
<b>Expenditure Category Total</b>	<b>0.0</b>	<b>0.0</b>

Expenditure Category	FY 2014 Actual	FY 2015 Expd. Plan
<b>Transfers</b>		
Transfers	0.0	0.0
<b>Expenditure Category Total</b>	<b>0.0</b>	<b>0.0</b>

Classification Listing

## Program Expenditure Schedule

Agency: CCA Corporation Commission

Program: 6-1 Pipeline Safety

Class Code	Title	Grade	Total FTE	Personal Services as of 07/01/14
ACV73	ADMV ASST III	17	1.0	32.3
AUN09	ADMV SVCS OFFICER II	21	1.0	51.7
AUN01	CC DIV DIR	01	1.0	120.7
ACV75	PIPELINE SFTY INSPR II	21	2.0	105.9
ACV75	PIPELINE SFTY INSPR SR	22	10.0	637.6
ACV75	PIPELINE SFTY INSPR SUPV	23	1.0	78.1

### Employee Retirement Coverage

Retirement System	FTE	Personal Services
State Retirement System	16.0	1,026.3

### Combined Regular & Elected Positions At/Above FICA Maximum of \$117,000

Total FTE	Personal Services	FTE's not eligible for Health, Dental & Life
1.0	120.7	0.0

Arizona Corporation Commission

Program 6-1 Pipeline Safety

Summary of Professional & Outside Services

The proposed base budget of \$ 2.0 (thousand) for Professional & Outside Services includes the use of Temporary Agency Services, for clerical assistance as needed, as well as for court reporters.