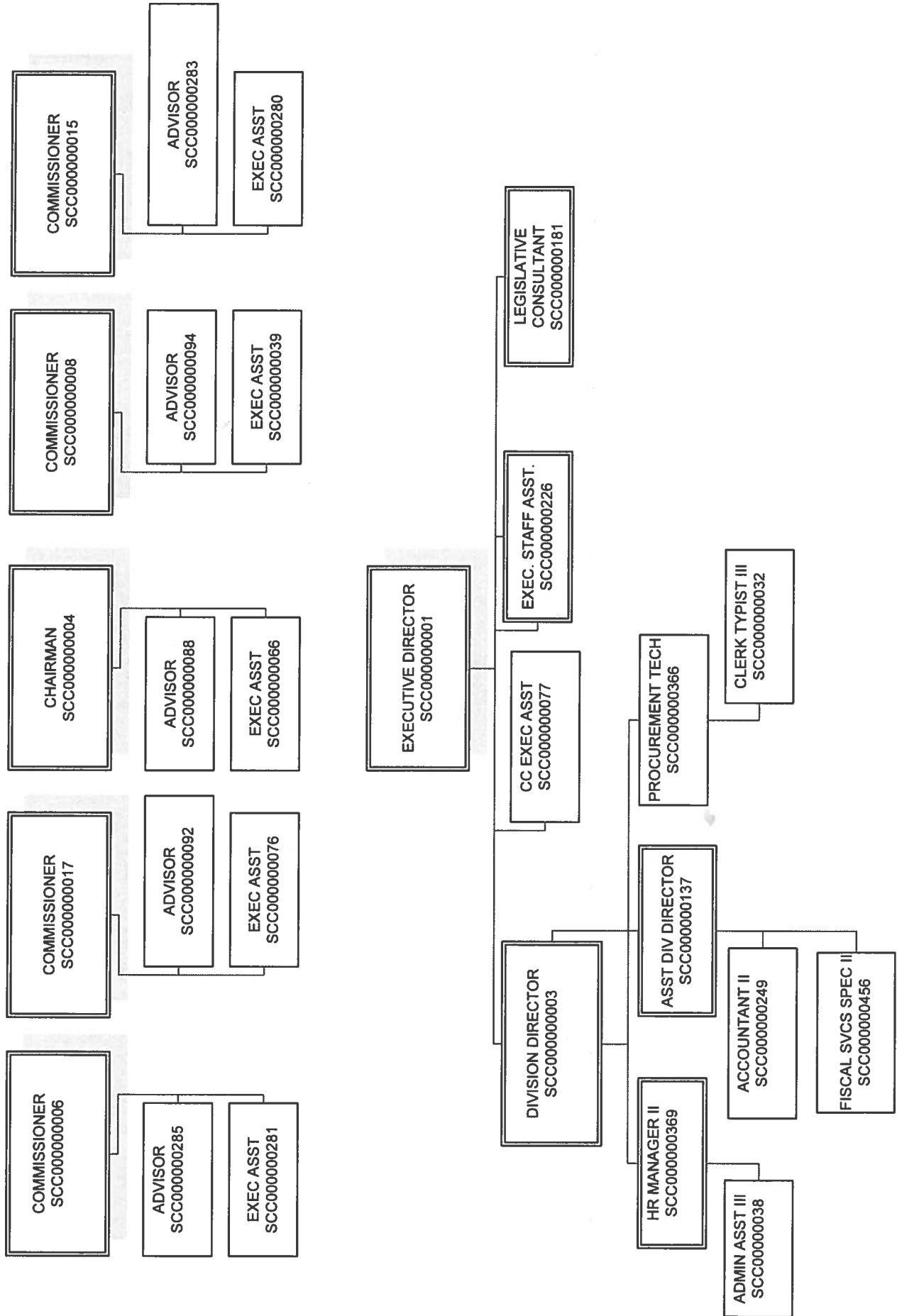


ARIZONA CORPORATION COMMISSION ADMINISTRATIVE SERVICES DIVISION



Program Summary of Expenditures and Budget Request

Agency: CCA Corporation Commission
 Program: 1 Administration

	FY 2015 Actual	FY 2016 Expd. Plan	FY 2017 Fund. Issue	FY 2017 Total
Program Summary				
1-1 Administration	3,419.2	3,252.2	0.0	3,252.2
Program Summary Total:	3,419.2	3,252.2	0.0	3,252.2
Expenditure Categories				
0000 FTE Positions	28.0	27.0	0.0	27.0
6000 Personal Services	2,007.7	1,976.6	0.0	1,976.6
6100 Employee Related Expenses	769.7	702.0	0.0	702.0
6200 Professional and Outside Services	53.3	35.0	0.0	35.0
6500 Travel In-State	13.1	24.8	0.0	24.8
6600 Travel Out of State	47.6	30.0	0.0	30.0
6700 Food (Library for Universities)	0.0	0.0	0.0	0.0
6800 Aid to Organizations and Individuals	0.0	0.0	0.0	0.0
7000 Other Operating Expenses	504.1	483.8	0.0	483.8
8000 Equipment	18.7	0.0	0.0	0.0
8100 Capital Outlay	0.0	0.0	0.0	0.0
8600 Debt Service	0.0	0.0	0.0	0.0
9000 Cost Allocation	0.0	0.0	0.0	0.0
9100 Transfers	5.0	0.0	0.0	0.0
Expenditure Categories Total:	3,419.2	3,252.2	0.0	3,252.2
Fund Source				
Appropriated Funds				
2172-A Utility Regulation Revolving (Appropriated)	2,150.2	2,028.5	0.0	2,028.5
2264-A Securities Regulatory & Enforcement (Appropriate)	437.3	503.3	0.0	503.3
2333-A Public Access Fund (Appropriated)	830.2	720.4	0.0	720.4
Non-Appropriated Funds	3,417.7	3,252.2	0.0	3,252.2
2500-N IGA and ISA Fund (Non-Appropriated)	1.5	0.0	0.0	0.0
Fund Source Total:	3,419.2	3,252.2	0.0	3,252.2

Program Summary of Expenditures and Budget Request

Agency: CCA Corporation Commission
 Program: 1 Administration

	FY 2015 Actual	FY 2016 Expd. Plan	FY 2017 Fund. Issue	FY 2017 Total
--	-------------------	-----------------------	------------------------	------------------

Program Budget Unit Summary of Expenditures and Budget Request for Selected Funds

Agency: CCA Corporation Commission

FY 2015	FY 2016	FY 2017	FY 2017
Actual	Expd. Plan	Fund. Issue	Total

Program: 1-1 Administration

Fund:	2172-A	Utility Regulation Revolving Fund			
Appropriated					
0000	FTE	27.0	26.0	0.0	26.0
6000	Personal Services	1,226.4	1,349.7	0.0	1,349.7
6100	Employee Related Expenses	620.6	452.9	0.0	452.9
6200	Professional and Outside Services	53.3	35.0	0.0	35.0
6500	Travel In-State	6.7	20.0	0.0	20.0
6600	Travel Out of State	44.9	30.0	0.0	30.0
6700	Food (Library for Universities)	0.0	0.0	0.0	0.0
6800	Aid to Organizations and Individuals	0.0	0.0	0.0	0.0
7000	Other Operating Expenses	174.6	140.9	0.0	140.9
8000	Equipment	18.7	0.0	0.0	0.0
8100	Capital Outlay	0.0	0.0	0.0	0.0
8600	Debt Service	0.0	0.0	0.0	0.0
9000	Cost Allocation	0.0	0.0	0.0	0.0
9100	Transfers	5.0	0.0	0.0	0.0
Appropriated Total:		2,150.2	2,028.5	0.0	2,028.5
Fund Total:		2,150.2	2,028.5	0.0	2,028.5

Fund:	2264-A	Security Regulatory and Enforcement Fund			
Appropriated					
0000	FTE	1.0	1.0	0.0	1.0
6000	Personal Services	301.3	132.2	0.0	132.2
6100	Employee Related Expenses	49.1	108.4	0.0	108.4
6200	Professional and Outside Services	0.0	0.0	0.0	0.0
6500	Travel In-State	0.1	0.0	0.0	0.0
6600	Travel Out of State	2.7	0.0	0.0	0.0
6700	Food (Library for Universities)	0.0	0.0	0.0	0.0
6800	Aid to Organizations and Individuals	0.0	0.0	0.0	0.0
7000	Other Operating Expenses	84.1	262.7	0.0	262.7
8000	Equipment	0.0	0.0	0.0	0.0
8100	Capital Outlay	0.0	0.0	0.0	0.0

Program Budget Unit Summary of Expenditures and Budget Request for Selected Funds

Agency: CCA Corporation Commission

	FY 2015 Actual	FY 2016 Expd. Plan	FY 2017 Fund. Issue	FY 2017 Total

Fund: 2264-A Security Regulatory and Enforcement Fund				
Appropriated				
8600 Debt Service	0.0	0.0	0.0	0.0
9000 Cost Allocation	0.0	0.0	0.0	0.0
9100 Transfers	0.0	0.0	0.0	0.0
Appropriated Total:	437.3	503.3	0.0	503.3
Fund Total:	437.3	503.3	0.0	503.3

Fund: 2333-A Public Access Fund				
Appropriated				
6000 Personal Services	480.0	494.7	0.0	494.7
6100 Employee Related Expenses	100.0	140.7	0.0	140.7
6200 Professional and Outside Services	0.0	0.0	0.0	0.0
6500 Travel In-State	6.3	4.8	0.0	4.8
6600 Travel Out of State	0.0	0.0	0.0	0.0
6700 Food (Library for Universities)	0.0	0.0	0.0	0.0
6800 Aid to Organizations and Individuals	0.0	0.0	0.0	0.0
7000 Other Operating Expenses	243.9	80.2	0.0	80.2
8000 Equipment	0.0	0.0	0.0	0.0
8100 Capital Outlay	0.0	0.0	0.0	0.0
8600 Debt Service	0.0	0.0	0.0	0.0
9000 Cost Allocation	0.0	0.0	0.0	0.0
9100 Transfers	0.0	0.0	0.0	0.0
Appropriated Total:	830.2	720.4	0.0	720.4
Fund Total:	830.2	720.4	0.0	720.4

Fund: 2500-N IGA and ISA Fund				
Non-Appropriated				
6000 Personal Services	0.0	0.0	0.0	0.0
6100 Employee Related Expenses	0.0	0.0	0.0	0.0

Date Printed: 8/31/2015 2:30:38 PM All dollars are presented in thousands (not FTE).

Program Budget Unit Summary of Expenditures and Budget Request for Selected Funds

Agency:	CCA	Corporation Commission	FY 2015	FY 2016	FY 2017	FY 2017
Program:	1-1	Administration	Actual	Expd. Plan	Fund. Issue	Total
Fund:	2500-N	IGA and ISA Fund				
Non-Appropriated						
6200		Professional and Outside Services	0.0	0.0	0.0	0.0
6500		Travel In-State	0.0	0.0	0.0	0.0
6600		Travel Out of State	0.0	0.0	0.0	0.0
6700		Food (Library for Universities)	0.0	0.0	0.0	0.0
6800		Aid to Organizations and Individuals	0.0	0.0	0.0	0.0
7000		Other Operating Expenses	1.5	0.0	0.0	0.0
8000		Equipment	0.0	0.0	0.0	0.0
8100		Capital Outlay	0.0	0.0	0.0	0.0
8600		Debt Service	0.0	0.0	0.0	0.0
9000		Cost Allocation	0.0	0.0	0.0	0.0
9100		Transfers	0.0	0.0	0.0	0.0
		Non-Appropriated Total:	1.5	0.0	0.0	0.0
		Fund Total:	1.5	0.0	0.0	0.0
		Program Total For Selected Funds:	3,419.2	3,252.2	0.0	3,252.2

All dollars are presented in thousands (not FTE).

Program Expenditure Schedule

Agency: **CCA Corporation Commission**

Program: **1-1 Administration**

Expenditure Category	FY 2015 Actual	FY 2016 Expd. Plan
FTE Positions		
FTE	28.0	27.0
Expenditure Category Total	28.0	27.0
Fund Source		
Appropriated		
2172-A Utility Regulation Revolving (Appropriated)	27.0	26.0
2264-A Securities Regulatory & Enforcement (Appropriated)	1.0	1.0
Fund Source Total	28.0	27.0

Expenditure Category	FY 2015 Actual	FY 2016 Expd. Plan
Personal Services		
Personal Services	2,007.7	1,976.6
Boards and Commissions	0.0	0.0
Uniform Allowance	0.0	0.0
Expenditure Category Total	2,007.7	1,976.6
Fund Source		
Appropriated		
2172-A Utility Regulation Revolving (Appropriated)	1,226.4	1,349.7
2264-A Securities Regulatory & Enforcement (Appropriated)	301.3	132.2
2333-A Public Access Fund (Appropriated)	480.0	494.7
Fund Source Total	2,007.7	1,976.6

Expenditure Category	FY 2015 Actual	FY 2016 Expd. Plan
Employee Related Expenses		
Employee Related Expenses	769.7	702.0
Expenditure Category Total	769.7	702.0
Fund Source		
Appropriated		
2172-A Utility Regulation Revolving (Appropriated)	620.6	452.9
2264-A Securities Regulatory & Enforcement (Appropriated)	49.1	108.4
2333-A Public Access Fund (Appropriated)	100.0	140.7
Fund Source Total	769.7	702.0

Expenditure Category	FY 2015 Actual	FY 2016 Expd. Plan
Professional & Outside Services		
External Prof/Outside Serv Budg And Appn	0.0	0.0
External Investment Services	0.0	0.0
Other External Financial Services	0.0	0.0
Attorney General Legal Services	0.0	0.0
External Legal Services	5.4	35.0
External Engineer/Architect Cost - Exp	0.0	0.0
External Engineer/Architect Cost- Cap	0.0	0.0
Other Design	0.0	0.0

Program Expenditure Schedule

Agency:	CCA	Corporation Commission
Program:	1-1	Administration

Expenditure Category	FY 2015 Actual	FY 2016 Expd. Plan
Professional & Outside Services		
Temporary Agency Services	0.0	0.0
Hospital Services	0.0	0.0
Other Medical Services	0.0	0.0
Institutional Care	0.0	0.0
Education And Training	0.8	0.0
Vendor Travel	0.0	0.0
External Telecom Consulting Services	0.0	0.0
Non - Confidential Specialist Fees	0.0	0.0
Confidential Specialist Fees	0.0	0.0
Outside Actuarial Costs	0.0	0.0
Other Professional And Outside Services	47.1	0.0
Expenditure Category Total	53.3	35.0
Fund Source		
Appropriated		
2172-A Utility Regulation Revolving (Appropriated)	53.3	35.0
Fund Source Total	53.3	35.0

Expenditure Category	FY 2015 Actual	FY 2016 Expd. Plan
Travel In-State		
Travel In-State	13.1	24.8
Expenditure Category Total	13.1	24.8
Fund Source		
Appropriated		
2172-A Utility Regulation Revolving (Appropriated)	6.7	20.0
2264-A Securities Regulatory & Enforcement (Appropriated)	0.1	0.0
2333-A Public Access Fund (Appropriated)	6.3	4.8
Fund Source Total	13.1	24.8

Expenditure Category	FY 2015 Actual	FY 2016 Expd. Plan
Travel Out-of-State		
Travel Out of State	47.6	30.0
Expenditure Category Total	47.6	30.0
Fund Source		
Appropriated		
2172-A Utility Regulation Revolving (Appropriated)	44.9	30.0
2264-A Securities Regulatory & Enforcement (Appropriated)	2.7	0.0
Fund Source Total	47.6	30.0

Expenditure Category	FY 2015 Actual	FY 2016 Expd. Plan
Food (Library for Universities)		
Food (Library for Universities)	0.0	0.0

Program Expenditure Schedule

Agency:	CCA	Corporation Commission
Program:	1-1	Administration

Expenditure Category	FY 2015 Actual	FY 2016 Expd. Plan
Food (Library for Universities)		
Expenditure Category Total	0.0	0.0

Expenditure Category	FY 2015 Actual	FY 2016 Expd. Plan
Aid to Organizations & Individuals		
Aid to Organizations and Individuals	0.0	0.0
Expenditure Category Total	0.0	0.0

Expenditure Category	FY 2015 Actual	FY 2016 Expd. Plan
Other Operating Expenditures		
Insurance & Related Charges	66.1	68.0
Information Technology Services	54.7	55.0
Utilities	0.0	0.0
Non-Building or Land Rent	8.6	8.5
Building Rent Charges to State Agencies	291.3	295.0
COP Building Rent Charges to State Agencies	0.0	0.0
Rental of Land & Buildings	0.0	0.0
Interest Payments	0.0	0.0
Internal Acct, Budgeting and Financial Svcs.	0.0	0.0
Payments for Internal Services	0.0	0.0
Repair & Maintenance	7.6	7.6
Software Support and Maintenance	4.8	5.0
Operating Supplies	17.3	15.0
Resale Supplies	0.0	0.0
Sales of Assets	0.0	0.0
Conference, Education & Training	20.0	25.0
Advertising	0.0	0.0
Printing & Photography	0.5	0.0
Postage & Delivery	1.4	1.6
Miscellaneous Operating	31.8	3.1
Depreciation Expense	0.0	0.0
Expenditure Category Total	504.1	483.8

Fund Source		
Appropriated		
2172-A Utility Regulation Revolving (Appropriated)	174.6	140.9
2264-A Securities Regulatory & Enforcement (Appropriated)	84.1	262.7
2333-A Public Access Fund (Appropriated)	243.9	80.2
	502.6	483.8
Non-Appropriated		
2500-N IGA and ISA Fund (Non-Appropriated)	1.5	0.0
	1.5	0.0
Fund Source Total	504.1	483.8

Expenditure Category	FY 2015 Actual	FY 2016 Expd. Plan
Equipment		
Vehicles - Capital Leases	0.0	0.0

Program Expenditure Schedule

Agency:	CCA	Corporation Commission
Program:	1-1	Administration

Expenditure Category	FY 2015 Actual	FY 2016 Expd. Plan
Equipment		
Furniture - Capital Leases	0.0	0.0
EDP Equipment - Mainframe - Capital Leases	0.0	0.0
EDP Equipment - Midrange - Capital Leases	0.0	0.0
EDP Equipment - PCs/LAN - Capital Leases	0.0	0.0
Telecommunication Equipment - Capital Leases	0.0	0.0
Other Equipment - Capital Leases	0.0	0.0
Capital Equipment Purchases	0.0	0.0
Vehicles - Non-Capital	0.0	0.0
Furniture - Non-Capital	2.1	0.0
EDP Equipment - Mainframe - Non-Capital	12.1	0.0
EDP Equipment - Midrange - Non-Capital	0.0	0.0
EDP Equipment - PCs/LAN - Non-Capital	0.0	0.0
Telecommunication Equipment - Non Capital	0.0	0.0
Other Equipment - Non-Capital	4.5	0.0
Non-Capitalized Software	0.0	0.0
Expenditure Category Total	18.7	0.0
Fund Source		
Appropriated		
2172-A Utility Regulation Revolving (Appropriated)	18.7	0.0
Fund Source Total	18.7	0.0

Expenditure Category	FY 2015 Actual	FY 2016 Expd. Plan
Capital Outlay		
Capital Outlay	0.0	0.0
Expenditure Category Total	0.0	0.0

Expenditure Category	FY 2015 Actual	FY 2016 Expd. Plan
Debt Services		
Debt Service	0.0	0.0
Expenditure Category Total	0.0	0.0

Expenditure Category	FY 2015 Actual	FY 2016 Expd. Plan
Cost Allocation		
Cost Allocation	0.0	0.0
Expenditure Category Total	0.0	0.0

Expenditure Category	FY 2015 Actual	FY 2016 Expd. Plan
Transfers		
Transfers	5.0	0.0

Program Expenditure Schedule

Agency: CCA Corporation Commission

Program: 1-1 Administration

Expenditure Category	FY 2015 Actual	FY 2016 Expd. Plan
Transfers		
Expenditure Category Total	5.0	0.0
Fund Source		
Appropriated		
2172-A Utility Regulation Revolving (Appropriated)	5.0	0.0
Fund Source Total	5.0	0.0

Classification Listing				
Class Code	Title	Grade	Total FTE	Personal Services as of 07/01/15
			-3.0	0.0
ACV73	ADMV ASST III	17	1.0	37.4
AUN03	CC ACCOUNTANT	19	1.0	44.0
AUN01	CC ASST DIV DIR	01	1.0	85.1
AUN05	CC CHAIRMAN	01	1.0	79.5
AUN05	CC COMMISSIONR	01	4.0	318.0
AUN01	CC DIV DIR	01	1.0	103.7
AUN02	CC EXEC ASST	19	6.0	281.8
AUN05	CC EXEC DIR	01	1.0	154.3
AUN03	CC EXECUTIVE STAFF ASSISTANT	20	1.0	57.2
AUN06	CC SPEC ASST TO COMMR	25	5.0	473.0
ACV31	CLERK TYPIST III	11	1.0	31.9
AUN07	COMMUNICATIONS MANAGER	24	1.0	77.5
AUN04	FISC SVCS SPCT 2	16	1.0	37.4
AUN07	HUMAN RSRCES MGR 2	22	1.0	66.0
AUN06	LEGIS CONSULT	24	1.0	82.5
AUN07	PCMT TECH	19	1.0	47.3

Employee Retirement Coverage			
Retirement System	FTE	Personal Services	Fund#
State Retirement System	19.0	1,496.6	2172-A
State Retirement System	1.0	82.5	2264-A
Elected Officials	5.0	397.5	2172-A

Combined Regular & Elected Positions At/Above FICA Maximum of \$118,500

Total FTE	Personal Services	FTE's not eligible for Health, Dental & Life
-----------	-------------------	--

Program Expenditure Schedule

Agency: CCA Corporation Commission

Program: 1-1 Administration

1.0	154.3	0.0
-----	-------	-----

Arizona Corporation Commission

Program 1-1 Administration

Summary of Professional & Outside Services

The proposed base budget of \$ 35.0 (thousand) for Professional & Outside Services includes the use of Temporary Agency Services for security guard services as needed, and for court reporters at commissioner-directed public comment sessions.