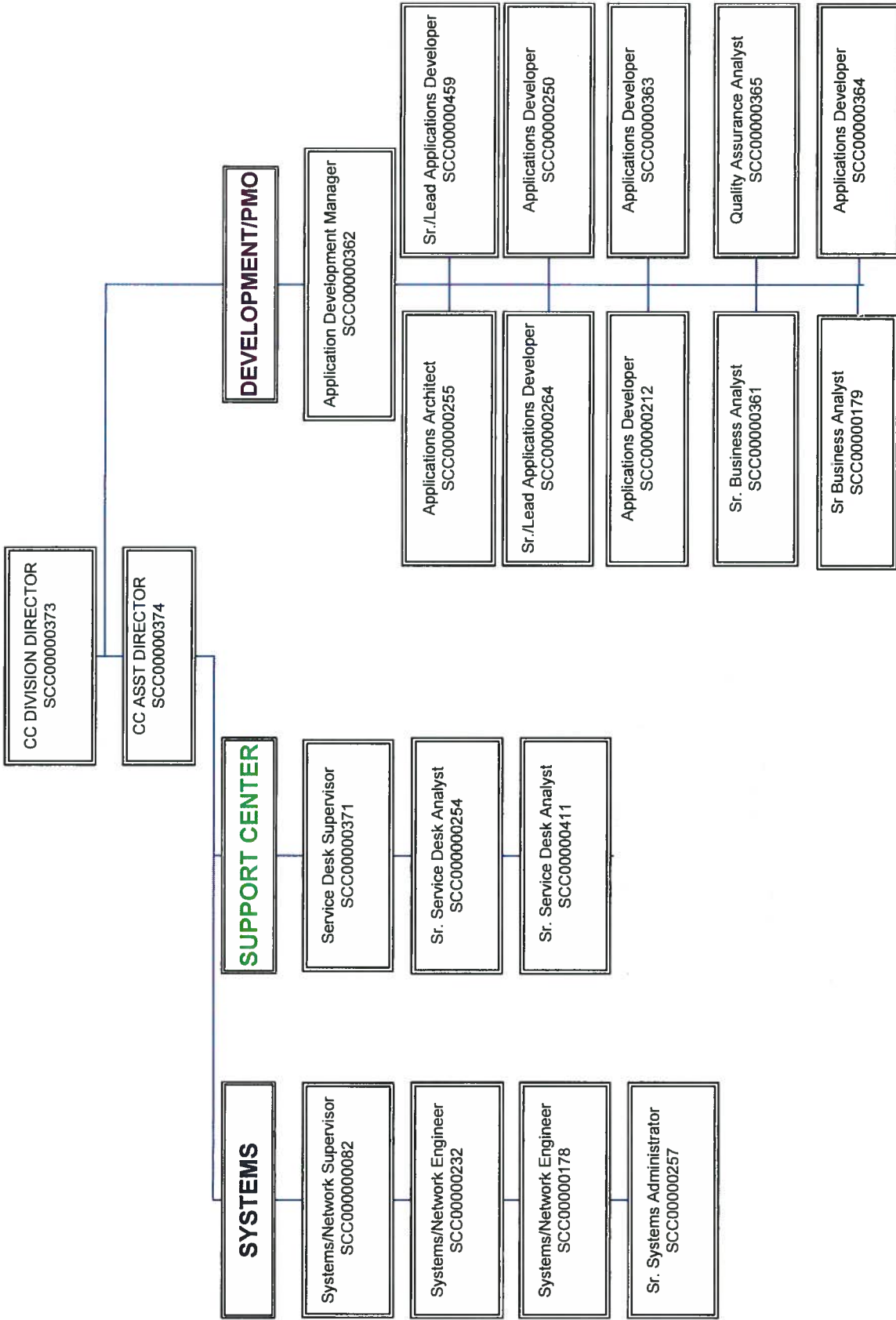


# ARIZONA CORPORATION COMMISSION IT DIVISION



# Program Summary of Expenditures and Budget Request

Agency: CCA Corporation Commission  
 Program: 9 Information Technology

	FY 2015		FY 2016		FY 2017	
	Actual	Expd. Plan	Expd. Plan	Fund. Issue	Total	Total
<b>Program Summary</b>						
9-1 Information Technology	2,455.2	2,549.6	0.0	0.0	2,549.6	
9-2 SLI Corp. Filings, Same Day Service	0.0	129.8	0.0	0.0	129.8	
9-3 SLI Named Claimants	0.6	0.0	0.0	0.0	0.0	
<b>Program Summary Total:</b>	<b>2,455.8</b>	<b>2,679.4</b>	<b>0.0</b>	<b>0.0</b>	<b>2,679.4</b>	
<b>Expenditure Categories</b>						
0000 FTE Positions	20.0	20.0	0.0	0.0	20.0	
6000 Personal Services	1,168.0	1,365.0	0.0	0.0	1,365.0	
6100 Employee Related Expenses	446.7	512.7	0.0	0.0	512.7	
6200 Professional and Outside Services	11.6	0.0	0.0	0.0	0.0	
6500 Travel In-State	0.0	0.0	0.0	0.0	0.0	
6600 Travel Out of State	0.0	0.0	0.0	0.0	0.0	
6700 Food (Library for Universities)	0.0	0.0	0.0	0.0	0.0	
6800 Aid to Organizations and Individuals	0.0	0.0	0.0	0.0	0.0	
7000 Other Operating Expenses	667.4	651.7	0.0	0.0	651.7	
8000 Equipment	157.8	150.0	0.0	0.0	150.0	
8100 Capital Outlay	0.0	0.0	0.0	0.0	0.0	
8600 Debt Service	0.0	0.0	0.0	0.0	0.0	
9000 Cost Allocation	0.0	0.0	0.0	0.0	0.0	
9100 Transfers	4.3	0.0	0.0	0.0	0.0	
<b>Expenditure Categories Total:</b>	<b>2,455.8</b>	<b>2,679.4</b>	<b>0.0</b>	<b>0.0</b>	<b>2,679.4</b>	
<b>Fund Source</b>						
<b>Appropriated Funds</b>						
1000-A General Fund (Appropriated)	0.6	0.0	0.0	0.0	0.0	
2172-A Utility Regulation Revolving (Appropriated)	711.5	747.0	0.0	0.0	747.0	
2264-A Securities Regulatory & Enforcement (Appropriate)	499.6	330.0	0.0	0.0	330.0	
2333-A Public Access Fund (Appropriated)	1,244.1	1,602.4	0.0	0.0	1,602.4	
<b>Fund Source Total:</b>	<b>2,455.8</b>	<b>2,679.4</b>	<b>0.0</b>	<b>0.0</b>	<b>2,679.4</b>	

# Program Budget Unit Summary of Expenditures and Budget Request for All Funds

Agency: CCA Corporation Commission  
 Program: 9-1 Information Technology

Expenditure Categories	FY 2015	FY 2016	FY 2017	FY 2017
	Actual	Expd. Plan	Fund. Issue	Total
0000 FTE	20.0	20.0	0.0	20.0
6000 Personal Services	1,168.0	1,275.0	0.0	1,275.0
6100 Employee Related Expenses	446.7	486.1	0.0	486.1
6200 Professional and Outside Services	11.6	0.0	0.0	0.0
6500 Travel In-State	0.0	0.0	0.0	0.0
6600 Travel Out of State	0.0	0.0	0.0	0.0
6700 Food (Library for Universities)	0.0	0.0	0.0	0.0
6800 Aid to Organizations and Individuals	0.0	0.0	0.0	0.0
7000 Other Operating Expenses	666.8	638.5	0.0	638.5
8000 Equipment	157.8	150.0	0.0	150.0
8100 Capital Outlay	0.0	0.0	0.0	0.0
8600 Debt Service	0.0	0.0	0.0	0.0
9000 Cost Allocation	0.0	0.0	0.0	0.0
9100 Transfers	4.3	0.0	0.0	0.0

**Expenditure Categories Total:**

2,455.2      2,549.6      0.0      2,549.6

**Fund Source**

**Appropriated Funds**

2172-A Utility Regulation Revolving (Appropriated)      711.5      747.0      0.0      747.0  
 2264-A Securities Regulatory & Enforcement (Appropriate)      499.6      330.0      0.0      330.0  
 2333-A Public Access Fund (Appropriated)      1,244.1      1,472.6      0.0      1,472.6

**Fund Source Total:**

2,455.2      2,549.6      0.0      2,549.6

# Program Budget Unit Summary of Expenditures and Budget Request for Selected Funds

Agency:	CCA Corporation Commission					
Program:	9-1	Information Technology				
Fund:	2172-A	Utility Regulation Revolving Fund				
			FY 2015 Actual	FY 2016 Expd. Plan	FY 2017 Fund. Issue	FY 2017 Total
<b>Appropriated</b>						
0000	FTE		10.0	10.0	0.0	10.0
6000	Personal Services		360.0	300.0	0.0	300.0
6100	Employee Related Expenses		131.8	197.0	0.0	197.0
6200	Professional and Outside Services		0.0	0.0	0.0	0.0
6500	Travel In-State		0.0	0.0	0.0	0.0
6600	Travel Out of State		0.0	0.0	0.0	0.0
6700	Food (Library for Universities)		0.0	0.0	0.0	0.0
6800	Aid to Organizations and Individuals		0.0	0.0	0.0	0.0
7000	Other Operating Expenses		62.8	100.0	0.0	100.0
8000	Equipment		152.6	150.0	0.0	150.0
8100	Capital Outlay		0.0	0.0	0.0	0.0
8600	Debt Service		0.0	0.0	0.0	0.0
9000	Cost Allocation		0.0	0.0	0.0	0.0
9100	Transfers		4.3	0.0	0.0	0.0
<b>Appropriated Total:</b>			711.5	747.0	0.0	747.0
<b>Fund Total:</b>			711.5	747.0	0.0	747.0
<b>Fund: 2264-A Security Regulatory and Enforcement Fund</b>						
<b>Appropriated</b>						
6000	Personal Services		109.7	0.0	0.0	0.0
6100	Employee Related Expenses		54.9	0.0	0.0	0.0
6200	Professional and Outside Services		0.0	0.0	0.0	0.0
6500	Travel In-State		0.0	0.0	0.0	0.0
6600	Travel Out of State		0.0	0.0	0.0	0.0
6700	Food (Library for Universities)		0.0	0.0	0.0	0.0
6800	Aid to Organizations and Individuals		0.0	0.0	0.0	0.0
7000	Other Operating Expenses		334.0	330.0	0.0	330.0
8000	Equipment		1.0	0.0	0.0	0.0
8100	Capital Outlay		0.0	0.0	0.0	0.0

# Program Budget Unit Summary of Expenditures and Budget Request for Selected Funds

Agency: CCA Corporation Commission

	FY 2015 Actual	FY 2016 Expd. Plan	FY 2017 Fund. Issue	FY 2017 Total
--	-------------------	-----------------------	------------------------	------------------

Program: 9-1 Information Technology

Fund:	2264-A Security Regulatory and Enforcement Fund			
<b>Appropriated</b>				
8600	Debt Service	0.0	0.0	0.0
9000	Cost Allocation	0.0	0.0	0.0
9100	Transfers	0.0	0.0	0.0
<b>Appropriated Total:</b>		<b>499.6</b>	<b>0.0</b>	<b>330.0</b>
<b>Fund Total:</b>		<b>499.6</b>	<b>0.0</b>	<b>330.0</b>

Fund:	2333-A Public Access Fund			
<b>Appropriated</b>				
0000	FTE	10.0	10.0	10.0
6000	Personal Services	698.3	975.0	975.0
6100	Employee Related Expenses	260.0	289.1	289.1
6200	Professional and Outside Services	11.6	0.0	0.0
6500	Travel In-State	0.0	0.0	0.0
6600	Travel Out of State	0.0	0.0	0.0
6700	Food (Library for Universities)	0.0	0.0	0.0
6800	Aid to Organizations and Individuals	0.0	0.0	0.0
7000	Other Operating Expenses	270.0	208.5	208.5
8000	Equipment	4.2	0.0	0.0
8100	Capital Outlay	0.0	0.0	0.0
8600	Debt Service	0.0	0.0	0.0
9000	Cost Allocation	0.0	0.0	0.0
9100	Transfers	0.0	0.0	0.0
<b>Appropriated Total:</b>		<b>1,244.1</b>	<b>1,472.6</b>	<b>1,472.6</b>
<b>Fund Total:</b>		<b>1,244.1</b>	<b>1,472.6</b>	<b>1,472.6</b>
<b>Program Total For Selected Funds:</b>		<b>2,455.2</b>	<b>2,549.6</b>	<b>2,549.6</b>

## Program Expenditure Schedule

Agency: CCA Corporation Commission

Program: 9-1 Information Technology

Expenditure Category	FY 2015 Actual	FY 2016 Expd. Plan
<b>FTE Positions</b>		
FTE	20.0	20.0
<b>Expenditure Category Total</b>	<b>20.0</b>	<b>20.0</b>
<b>Fund Source</b>		
<b>Appropriated</b>		
2172-A Utility Regulation Revolving (Appropriated)	10.0	10.0
2333-A Public Access Fund (Appropriated)	10.0	10.0
<b>Fund Source Total</b>	<b>20.0</b>	<b>20.0</b>

Expenditure Category	FY 2015 Actual	FY 2016 Expd. Plan
<b>Personal Services</b>		
Personal Services	1,168.0	1,275.0
Boards and Commissions	0.0	0.0
Uniform Allowance	0.0	0.0
<b>Expenditure Category Total</b>	<b>1,168.0</b>	<b>1,275.0</b>
<b>Fund Source</b>		
<b>Appropriated</b>		
2172-A Utility Regulation Revolving (Appropriated)	360.0	300.0
2264-A Securities Regulatory & Enforcement (Appropriated)	109.7	0.0
2333-A Public Access Fund (Appropriated)	698.3	975.0
<b>Fund Source Total</b>	<b>1,168.0</b>	<b>1,275.0</b>

Expenditure Category	FY 2015 Actual	FY 2016 Expd. Plan
<b>Employee Related Expenses</b>		
Employee Related Expenses	446.7	486.1
<b>Expenditure Category Total</b>	<b>446.7</b>	<b>486.1</b>
<b>Fund Source</b>		
<b>Appropriated</b>		
2172-A Utility Regulation Revolving (Appropriated)	131.8	197.0
2264-A Securities Regulatory & Enforcement (Appropriated)	54.9	0.0
2333-A Public Access Fund (Appropriated)	260.0	289.1
<b>Fund Source Total</b>	<b>446.7</b>	<b>486.1</b>

Expenditure Category	FY 2015 Actual	FY 2016 Expd. Plan
<b>Professional &amp; Outside Services</b>		
External Prof/Outside Serv Budg And Appn	0.0	0.0
External Investment Services	0.0	0.0
Other External Financial Services	0.0	0.0
Attorney General Legal Services	0.0	0.0
External Legal Services	0.0	0.0
External Engineer/Architect Cost - Exp	0.0	0.0
External Engineer/Architect Cost- Cap	0.0	0.0
Other Design	0.0	0.0

## Program Expenditure Schedule

Agency: CCA Corporation Commission

Program: 9-1 Information Technology

Expenditure Category	FY 2015 Actual	FY 2016 Expd. Plan
<b>Professional &amp; Outside Services</b>		
Temporary Agency Services	11.6	0.0
Hospital Services	0.0	0.0
Other Medical Services	0.0	0.0
Institutional Care	0.0	0.0
Education And Training	0.0	0.0
Vendor Travel	0.0	0.0
External Telecom Consulting Services	0.0	0.0
Non - Confidential Specialist Fees	0.0	0.0
Confidential Specialist Fees	0.0	0.0
Outside Actuarial Costs	0.0	0.0
Other Professional And Outside Services	0.0	0.0
<b>Expenditure Category Total</b>	<b>11.6</b>	<b>0.0</b>
<b>Fund Source</b>		
<b>Appropriated</b>		
2333-A Public Access Fund (Appropriated)	11.6	0.0
	<b>11.6</b>	<b>0.0</b>
<b>Fund Source Total</b>	<b>11.6</b>	<b>0.0</b>

Expenditure Category	FY 2015 Actual	FY 2016 Expd. Plan
<b>Travel In-State</b>		
Travel In-State	0.0	0.0
<b>Expenditure Category Total</b>	<b>0.0</b>	<b>0.0</b>

Expenditure Category	FY 2015 Actual	FY 2016 Expd. Plan
<b>Travel Out-of-State</b>		
Travel Out of State	0.0	0.0
<b>Expenditure Category Total</b>	<b>0.0</b>	<b>0.0</b>

Expenditure Category	FY 2015 Actual	FY 2016 Expd. Plan
<b>Food (Library for Universities)</b>		
Food (Library for Universities)	0.0	0.0
<b>Expenditure Category Total</b>	<b>0.0</b>	<b>0.0</b>

Expenditure Category	FY 2015 Actual	FY 2016 Expd. Plan
<b>Aid to Organizations &amp; Individuals</b>		
Aid to Organizations and Individuals	0.0	0.0
<b>Expenditure Category Total</b>	<b>0.0</b>	<b>0.0</b>

Expenditure Category	FY 2015 Actual	FY 2016 Expd. Plan
<b>Other Operating Expenditures</b>		
Insurance & Related Charges	0.0	0.0

## Program Expenditure Schedule

Agency: CCA Corporation Commission

Program: 9-1 Information Technology

Expenditure Category	FY 2015 Actual	FY 2016 Expd. Plan
<b>Other Operating Expenditures</b>		
Information Technology Services	212.0	208.0
Utilities	0.0	0.0
Non-Building or Land Rent	0.0	0.0
Building Rent Charges to State Agencies	25.2	25.2
COP Building Rent Charges to State Agencies	0.0	0.0
Rental of Land & Buildings	0.0	0.0
Interest Payments	0.0	0.0
Internal Acct, Budgeting and Financial Svcs.	0.0	0.0
Payments for Internal Services	0.0	0.0
Repair & Maintenance	42.8	40.0
Software Support and Maintenance	348.9	345.0
Operating Supplies	12.9	10.0
Resale Supplies	0.0	0.0
Sales of Assets	0.0	0.0
Conference, Education & Training	20.6	10.0
Advertising	0.0	0.0
Printing & Photography	0.0	0.0
Postage & Delivery	0.0	0.0
Miscellaneous Operating	4.4	0.3
Depreciation Expense	0.0	0.0
<b>Expenditure Category Total</b>	<b>666.8</b>	<b>638.5</b>
<b>Fund Source</b>		
<b>Appropriated</b>		
2172-A Utility Regulation Revolving (Appropriated)	62.8	100.0
2264-A Securities Regulatory & Enforcement (Appropriated)	334.0	330.0
2333-A Public Access Fund (Appropriated)	270.0	208.5
	<b>666.8</b>	<b>638.5</b>
<b>Fund Source Total</b>	<b>666.8</b>	<b>638.5</b>

Expenditure Category	FY 2015 Actual	FY 2016 Expd. Plan
<b>Equipment</b>		
Vehicles - Capital Leases	0.0	0.0
Furniture - Capital Leases	0.0	0.0
EDP Equipment - Mainframe - Capital Leases	0.0	0.0
EDP Equipment - Midrange - Capital Leases	0.0	0.0
EDP Equipment - PCs/LAN - Capital Leases	0.0	0.0
Telecommunication Equipment - Capital Leases	0.0	0.0
Other Equipment - Capital Leases	0.0	0.0
Capital Equipment Purchases	55.2	55.0
Vehicles - Non-Capital	0.0	0.0
Furniture - Non-Capital	7.6	0.0
EDP Equipment - Mainframe - Non-Capital	93.3	95.0
EDP Equipment - Midrange - Non-Capital	0.0	0.0
EDP Equipment - PCs/LAN - Non-Capital	0.0	0.0
Telecommunication Equipment - Non Capital	0.7	0.0
Other Equipment - Non-Capital	0.0	0.0
Non-Capitalized Software	1.0	0.0



## Program Expenditure Schedule

Agency: CCA Corporation Commission

Program: 9-1 Information Technology

Expenditure Category	FY 2015 Actual	FY 2016 Expd. Plan
<b>Equipment</b>		
<b>Expenditure Category Total</b>	<b>157.8</b>	<b>150.0</b>
<b>Fund Source</b>		
<b>Appropriated</b>		
2172-A Utility Regulation Revolving (Appropriated)	152.6	150.0
2264-A Securities Regulatory & Enforcement (Appropriated)	1.0	0.0
2333-A Public Access Fund (Appropriated)	4.2	0.0
<b>Fund Source Total</b>	<b>157.8</b>	<b>150.0</b>

Expenditure Category	FY 2015 Actual	FY 2016 Expd. Plan
<b>Capital Outlay</b>		
Capital Outlay	0.0	0.0
<b>Expenditure Category Total</b>	<b>0.0</b>	<b>0.0</b>

Expenditure Category	FY 2015 Actual	FY 2016 Expd. Plan
<b>Debt Services</b>		
Debt Service	0.0	0.0
<b>Expenditure Category Total</b>	<b>0.0</b>	<b>0.0</b>

Expenditure Category	FY 2015 Actual	FY 2016 Expd. Plan
<b>Cost Allocation</b>		
Cost Allocation	0.0	0.0
<b>Expenditure Category Total</b>	<b>0.0</b>	<b>0.0</b>

Expenditure Category	FY 2015 Actual	FY 2016 Expd. Plan
<b>Transfers</b>		
Transfers	4.3	0.0
<b>Expenditure Category Total</b>	<b>4.3</b>	<b>0.0</b>
<b>Fund Source</b>		
<b>Appropriated</b>		
2172-A Utility Regulation Revolving (Appropriated)	4.3	0.0
<b>Fund Source Total</b>	<b>4.3</b>	<b>0.0</b>

Classification Listing				
Class Code	Title	Grade	Total FTE	Personal Services as of 07/01/15
			3.0	32.5
S1000	APPS ARCHITECT	29	1.0	86.0
S1000	APPS DEVELOPER	26	3.0	198.2

## Program Expenditure Schedule

Agency: CCA Corporation Commission

Program: 9-1 Information Technology

S1000	APPS DVMT MGR	29	1.0	92.0
AUN10	APPS DVMT SR MGR		2.0	164.0
AUN01	CC ASSISTANT DIVISION DIRECTOR	01	1.0	97.0
AUN01	CC DIVISION DIRECTOR	01	1.0	121.0
AUN10	SERVICE DESK SPV		1.0	55.0
AUN10	SR BUSINESS ANALYST		2.0	130.0
AUN10	SR SERVICE DESK ANALYST		2.0	90.0
AUN10	SR SYSTEMS ADMR		1.0	58.5
AUN10	SYSTEMS/NETWORK ENGINEER		1.0	68.3
AUN10	SYSTEMS/NETWORK SPV		1.0	82.5

### Employee Retirement Coverage

Retirement System	FTE	Personal Services	Fund#
State Retirement System	10.0	637.5	2172-A
State Retirement System	10.0	637.5	2333-A

### Combined Regular & Elected Positions At/Above FICA Maximum of \$118,500

Total FTE	Personal Services	FTE's not eligible for Health, Dental & Life
1.0	121.0	0.0

# Program Budget Unit Summary of Expenditures and Budget Request for All Funds

Agency: CCA Corporation Commission  
 Program: 9-2 SLI Corp. Filings, Same Day Service

Expenditure Categories	FY 2015	FY 2016	FY 2017	FY 2017
	Actual	Expd. Plan	Fund. Issue	Total
0000 FTE	0.0	0.0	0.0	0.0
6000 Personal Services	0.0	90.0	0.0	90.0
6100 Employee Related Expenses	0.0	26.6	0.0	26.6
6200 Professional and Outside Services	0.0	0.0	0.0	0.0
6500 Travel In-State	0.0	0.0	0.0	0.0
6600 Travel Out of State	0.0	0.0	0.0	0.0
6700 Food (Library for Universities)	0.0	0.0	0.0	0.0
6800 Aid to Organizations and Individuals	0.0	0.0	0.0	0.0
7000 Other Operating Expenses	0.0	13.2	0.0	13.2
8000 Equipment	0.0	0.0	0.0	0.0
8100 Capital Outlay	0.0	0.0	0.0	0.0
8600 Debt Service	0.0	0.0	0.0	0.0
9000 Cost Allocation	0.0	0.0	0.0	0.0
9100 Transfers	0.0	0.0	0.0	0.0

**Expenditure Categories Total:**

	0.0	129.8	0.0	129.8
--	-----	-------	-----	-------

**Fund Source**

**Appropriated Funds**

2333-A Public Access Fund (Appropriated)

	0.0	129.8	0.0	129.8
	0.0	129.8	0.0	129.8

**Fund Source Total:**

	0.0	129.8	0.0	129.8
--	-----	-------	-----	-------

# Program Budget Unit Summary of Expenditures and Budget Request for Selected Funds

Agency: CCA Corporation Commission  
 FY 2015 Actual FY 2016 Expd. Plan FY 2017 Fund. Issue FY 2017 Total

Program: 9-2 SLJ Corp. Filings, Same Day Service

Fund:	2333-A	Public Access Fund				
<b>Appropriated</b>						
0000	FTE		0.0	0.0	0.0	0.0
6000	Personal Services		0.0	90.0	0.0	90.0
6100	Employee Related Expenses		0.0	26.6	0.0	26.6
6200	Professional and Outside Services		0.0	0.0	0.0	0.0
6500	Travel In-State		0.0	0.0	0.0	0.0
6600	Travel Out of State		0.0	0.0	0.0	0.0
6700	Food (Library for Universities)		0.0	0.0	0.0	0.0
6800	Aid to Organizations and Individuals		0.0	0.0	0.0	0.0
7000	Other Operating Expenses		0.0	13.2	0.0	13.2
8000	Equipment		0.0	0.0	0.0	0.0
8100	Capital Outlay		0.0	0.0	0.0	0.0
8600	Debt Service		0.0	0.0	0.0	0.0
9000	Cost Allocation		0.0	0.0	0.0	0.0
9100	Transfers		0.0	0.0	0.0	0.0
<b>Appropriated Total:</b>			0.0	129.8	0.0	129.8
<b>Fund Total:</b>			0.0	129.8	0.0	129.8
<b>Program Total For Selected Funds:</b>			0.0	129.8	0.0	129.8

## Program Expenditure Schedule

Agency: CCA Corporation Commission

Program: 9-2 SLI Corp. Filings, Same Day Service

Expenditure Category	FY 2015 Actual	FY 2016 Expd. Plan
<b>FTE Positions</b>		
FTE	0.0	0.0
<b>Expenditure Category Total</b>	<b>0.0</b>	<b>0.0</b>
<b>Fund Source</b>		
<b>Appropriated</b>		
2333-A Public Access Fund (Appropriated)	0.0	0.0
<b>Fund Source Total</b>	<b>0.0</b>	<b>0.0</b>

Expenditure Category	FY 2015 Actual	FY 2016 Expd. Plan
<b>Personal Services</b>		
Personal Services	0.0	90.0
Boards and Commissions	0.0	0.0
Uniform Allowance	0.0	0.0
<b>Expenditure Category Total</b>	<b>0.0</b>	<b>90.0</b>
<b>Fund Source</b>		
<b>Appropriated</b>		
2333-A Public Access Fund (Appropriated)	0.0	90.0
<b>Fund Source Total</b>	<b>0.0</b>	<b>90.0</b>

Expenditure Category	FY 2015 Actual	FY 2016 Expd. Plan
<b>Employee Related Expenses</b>		
Employee Related Expenses	0.0	26.6
<b>Expenditure Category Total</b>	<b>0.0</b>	<b>26.6</b>
<b>Fund Source</b>		
<b>Appropriated</b>		
2333-A Public Access Fund (Appropriated)	0.0	26.6
<b>Fund Source Total</b>	<b>0.0</b>	<b>26.6</b>

Expenditure Category	FY 2015 Actual	FY 2016 Expd. Plan
<b>Professional &amp; Outside Services</b>		
External Prof/Outside Serv Budg And Appn	0.0	0.0
External Investment Services	0.0	0.0
Other External Financial Services	0.0	0.0
Attorney General Legal Services	0.0	0.0
External Legal Services	0.0	0.0
External Engineer/Architect Cost - Exp	0.0	0.0
External Engineer/Architect Cost- Cap	0.0	0.0
Other Design	0.0	0.0
Temporary Agency Services	0.0	0.0
Hospital Services	0.0	0.0
Other Medical Services	0.0	0.0
Institutional Care	0.0	0.0
Education And Training	0.0	0.0

## Program Expenditure Schedule

Agency: **CCA Corporation Commission**  
 Program: **9-2 SLI Corp. Filings, Same Day Service**

Expenditure Category	FY 2015 Actual	FY 2016 Expd. Plan
<b>Professional &amp; Outside Services</b>		
Vendor Travel	0.0	0.0
External Telecom Consulting Services	0.0	0.0
Non - Confidential Specialist Fees	0.0	0.0
Confidential Specialist Fees	0.0	0.0
Outside Actuarial Costs	0.0	0.0
Other Professional And Outside Services	0.0	0.0
<b>Expenditure Category Total</b>	<b>0.0</b>	<b>0.0</b>

Expenditure Category	FY 2015 Actual	FY 2016 Expd. Plan
<b>Travel In-State</b>		
Travel In-State	0.0	0.0
<b>Expenditure Category Total</b>	<b>0.0</b>	<b>0.0</b>

Expenditure Category	FY 2015 Actual	FY 2016 Expd. Plan
<b>Travel Out-of-State</b>		
Travel Out of State	0.0	0.0
<b>Expenditure Category Total</b>	<b>0.0</b>	<b>0.0</b>

Expenditure Category	FY 2015 Actual	FY 2016 Expd. Plan
<b>Food (Library for Universities)</b>		
Food (Library for Universities)	0.0	0.0
<b>Expenditure Category Total</b>	<b>0.0</b>	<b>0.0</b>

Expenditure Category	FY 2015 Actual	FY 2016 Expd. Plan
<b>Aid to Organizations &amp; Individuals</b>		
Aid to Organizations and Individuals	0.0	0.0
<b>Expenditure Category Total</b>	<b>0.0</b>	<b>0.0</b>

Expenditure Category	FY 2015 Actual	FY 2016 Expd. Plan
<b>Other Operating Expenditures</b>		
Insurance & Related Charges	0.0	0.0
Information Technology Services	0.0	0.0
Utilities	0.0	0.0
Non-Building or Land Rent	0.0	0.0
Building Rent Charges to State Agencies	0.0	0.0
COP Building Rent Charges to State Agencies	0.0	0.0
Rental of Land & Buildings	0.0	0.0
Interest Payments	0.0	0.0
Internal Acct, Budgeting and Financial Svcs.	0.0	0.0
Payments for Internal Services	0.0	0.0
Repair & Maintenance	0.0	0.0

## Program Expenditure Schedule

Agency: CCA Corporation Commission

Program: 9-2 SLI Corp. Filings, Same Day Service

Expenditure Category	FY 2015 Actual	FY 2016 Expd. Plan
<b>Other Operating Expenditures</b>		
Software Support and Maintenance	0.0	0.0
Operating Supplies	0.0	0.0
Resale Supplies	0.0	0.0
Sales of Assets	0.0	0.0
Conference, Education & Training	0.0	0.0
Advertising	0.0	0.0
Printing & Photography	0.0	0.0
Postage & Delivery	0.0	0.0
Miscellaneous Operating	0.0	13.2
Depreciation Expense	0.0	0.0
<b>Expenditure Category Total</b>	<b>0.0</b>	<b>13.2</b>
<b>Fund Source</b>		
<b>Appropriated</b>		
2333-A Public Access Fund (Appropriated)	0.0	13.2
	<b>0.0</b>	<b>13.2</b>
<b>Fund Source Total</b>	<b>0.0</b>	<b>13.2</b>

Expenditure Category	FY 2015 Actual	FY 2016 Expd. Plan
<b>Equipment</b>		
Vehicles - Capital Leases	0.0	0.0
Furniture - Capital Leases	0.0	0.0
EDP Equipment - Mainframe - Capital Leases	0.0	0.0
EDP Equipment - Midrange - Capital Leases	0.0	0.0
EDP Equipment - PCs/LAN - Capital Leases	0.0	0.0
Telecommunication Equipment - Capital Leases	0.0	0.0
Other Equipment - Capital Leases	0.0	0.0
Capital Equipment Purchases	0.0	0.0
Vehicles - Non-Capital	0.0	0.0
Furniture - Non-Capital	0.0	0.0
EDP Equipment - Mainframe - Non-Capital	0.0	0.0
EDP Equipment - Midrange - Non-Capital	0.0	0.0
EDP Equipment - PCs/LAN - Non-Capital	0.0	0.0
Telecommunication Equipment - Non Capital	0.0	0.0
Other Equipment - Non-Capital	0.0	0.0
Non-Capitalized Software	0.0	0.0
<b>Expenditure Category Total</b>	<b>0.0</b>	<b>0.0</b>

Expenditure Category	FY 2015 Actual	FY 2016 Expd. Plan
<b>Capital Outlay</b>		
Capital Outlay	0.0	0.0
<b>Expenditure Category Total</b>	<b>0.0</b>	<b>0.0</b>

Expenditure Category	FY 2015 Actual	FY 2016 Expd. Plan
<b>Debt Services</b>		
Debt Service	0.0	0.0

## Program Expenditure Schedule

Agency: CCA Corporation Commission

Program: 9-2 SLI Corp. Filings, Same Day Service

Expenditure Category	FY 2015 Actual	FY 2016 Expd. Plan
Debt Services		
<b>Expenditure Category Total</b>	<b>0.0</b>	<b>0.0</b>

Expenditure Category	FY 2015 Actual	FY 2016 Expd. Plan
Cost Allocation		
Cost Allocation	0.0	0.0
<b>Expenditure Category Total</b>	<b>0.0</b>	<b>0.0</b>

Expenditure Category	FY 2015 Actual	FY 2016 Expd. Plan
Transfers		
Transfers	0.0	0.0
<b>Expenditure Category Total</b>	<b>0.0</b>	<b>0.0</b>

Classification Listing				
Class Code	Title	Grade	Total FTE	Personal Services as of 07/01/15
AUN06	CC EDP ADMINISTRATOR	25	0.0	90.0

Employee Retirement Coverage			
Retirement System	FTE	Personal Services	Fund#
State Retirement System	0.0	90.0	2333-A



# Program Budget Unit Summary of Expenditures and Budget Request for All Funds

Agency: CCA Corporation Commission  
 Program: 9-3 SLI Named Claimants

Expenditure Categories	FY 2015	FY 2016	FY 2017	FY 2017
	Actual	Expd. Plan	Fund. Issue	Total
6000 Personal Services	0.0	0.0	0.0	0.0
6100 Employee Related Expenses	0.0	0.0	0.0	0.0
6200 Professional and Outside Services	0.0	0.0	0.0	0.0
6500 Travel In-State	0.0	0.0	0.0	0.0
6600 Travel Out of State	0.0	0.0	0.0	0.0
6700 Food (Library for Universities)	0.0	0.0	0.0	0.0
6800 Aid to Organizations and Individuals	0.0	0.0	0.0	0.0
7000 Other Operating Expenses	0.6	0.0	0.0	0.0
8000 Equipment	0.0	0.0	0.0	0.0
8100 Capital Outlay	0.0	0.0	0.0	0.0
8600 Debt Service	0.0	0.0	0.0	0.0
9000 Cost Allocation	0.0	0.0	0.0	0.0
9100 Transfers	0.0	0.0	0.0	0.0
<b>Expenditure Categories Total:</b>	<b>0.6</b>	<b>0.0</b>	<b>0.0</b>	<b>0.0</b>

**Expenditure Categories Total:**

Fund Source	FY 2015	FY 2016	FY 2017	FY 2017
Appropriated Funds	Actual	Expd. Plan	Fund. Issue	Total
1000-A General Fund (Appropriated)	0.6	0.0	0.0	0.0
<b>Fund Source Total:</b>	<b>0.6</b>	<b>0.0</b>	<b>0.0</b>	<b>0.0</b>

**Fund Source**

**Appropriated Funds**

1000-A General Fund (Appropriated)

**Fund Source Total:**

# Program Budget Unit Summary of Expenditures and Budget Request for Selected Funds

Agency: CCA Corporation Commission

FY 2015 Actual	FY 2016 Expd. Plan	FY 2017 Fund. Issue	FY 2017 Total
-------------------	-----------------------	------------------------	------------------

Program: 9-3 SLI Named Claimants

Fund: 1000-A General Fund

**Appropriated**

6000 Personal Services	0.0	0.0	0.0	0.0
6100 Employee Related Expenses	0.0	0.0	0.0	0.0
6200 Professional and Outside Services	0.0	0.0	0.0	0.0
6500 Travel In-State	0.0	0.0	0.0	0.0
6600 Travel Out of State	0.0	0.0	0.0	0.0
6700 Food (Library for Universities)	0.0	0.0	0.0	0.0
6800 Aid to Organizations and Individuals	0.0	0.0	0.0	0.0
7000 Other Operating Expenses	0.6	0.0	0.0	0.0
8000 Equipment	0.0	0.0	0.0	0.0
8100 Capital Outlay	0.0	0.0	0.0	0.0
8600 Debt Service	0.0	0.0	0.0	0.0
9000 Cost Allocation	0.0	0.0	0.0	0.0
9100 Transfers	0.0	0.0	0.0	0.0
<b>Appropriated Total:</b>	<b>0.6</b>	<b>0.0</b>	<b>0.0</b>	<b>0.0</b>
<b>Fund Total:</b>	<b>0.6</b>	<b>0.0</b>	<b>0.0</b>	<b>0.0</b>
<b>Program Total For Selected Funds:</b>	<b>0.6</b>	<b>0.0</b>	<b>0.0</b>	<b>0.0</b>

## Program Expenditure Schedule

<b>Agency:</b>	CCA Corporation Commission
<b>Program:</b>	9-3 SLI Named Claimants

Expenditure Category	FY 2015 Actual	FY 2016 Expd. Plan
<b>FTE Positions</b>		
FTE	0.0	0.0
<b>Expenditure Category Total</b>	0.0	0.0

Expenditure Category	FY 2015 Actual	FY 2016 Expd. Plan
<b>Personal Services</b>		
Personal Services	0.0	0.0
Boards and Commissions	0.0	0.0
Uniform Allowance	0.0	0.0
<b>Expenditure Category Total</b>	0.0	0.0

Expenditure Category	FY 2015 Actual	FY 2016 Expd. Plan
<b>Employee Related Expenses</b>		
Employee Related Expenses	0.0	0.0
<b>Expenditure Category Total</b>	0.0	0.0

Expenditure Category	FY 2015 Actual	FY 2016 Expd. Plan
<b>Professional &amp; Outside Services</b>		
External Prof/Outside Serv Budg And Appn	0.0	0.0
External Investment Services	0.0	0.0
Other External Financial Services	0.0	0.0
Attorney General Legal Services	0.0	0.0
External Legal Services	0.0	0.0
External Engineer/Architect Cost - Exp	0.0	0.0
External Engineer/Architect Cost- Cap	0.0	0.0
Other Design	0.0	0.0
Temporary Agency Services	0.0	0.0
Hospital Services	0.0	0.0
Other Medical Services	0.0	0.0
Institutional Care	0.0	0.0
Education And Training	0.0	0.0
Vendor Travel	0.0	0.0
External Telecom Consulting Services	0.0	0.0
Non - Confidential Specialist Fees	0.0	0.0
Confidential Specialist Fees	0.0	0.0
Outside Actuarial Costs	0.0	0.0
Other Professional And Outside Services	0.0	0.0
<b>Expenditure Category Total</b>	0.0	0.0

Expenditure Category	FY 2015 Actual	FY 2016 Expd. Plan
<b>Travel In-State</b>		
Travel In-State	0.0	0.0

## Program Expenditure Schedule

Agency: CCA Corporation Commission

Program: 9-3 SLI Named Claimants

Expenditure Category	FY 2015 Actual	FY 2016 Expd. Plan
Travel In-State		
<b>Expenditure Category Total</b>	<b>0.0</b>	<b>0.0</b>

Expenditure Category	FY 2015 Actual	FY 2016 Expd. Plan
Travel Out-of-State		
Travel Out of State	0.0	0.0
<b>Expenditure Category Total</b>	<b>0.0</b>	<b>0.0</b>

Expenditure Category	FY 2015 Actual	FY 2016 Expd. Plan
Food (Library for Universities)		
Food (Library for Universities)	0.0	0.0
<b>Expenditure Category Total</b>	<b>0.0</b>	<b>0.0</b>

Expenditure Category	FY 2015 Actual	FY 2016 Expd. Plan
Aid to Organizations & Individuals		
Aid to Organizations and Individuals	0.0	0.0
<b>Expenditure Category Total</b>	<b>0.0</b>	<b>0.0</b>

Expenditure Category	FY 2015 Actual	FY 2016 Expd. Plan
Other Operating Expenditures		
Insurance & Related Charges	0.0	0.0
Information Technology Services	0.6	0.0
Utilities	0.0	0.0
Non-Building or Land Rent	0.0	0.0
Building Rent Charges to State Agencies	0.0	0.0
COP Building Rent Charges to State Agencies	0.0	0.0
Rental of Land & Buildings	0.0	0.0
Interest Payments	0.0	0.0
Internal Acct, Budgeting and Financial Svcs.	0.0	0.0
Payments for Internal Services	0.0	0.0
Repair & Maintenance	0.0	0.0
Software Support and Maintenance	0.0	0.0
Operating Supplies	0.0	0.0
Resale Supplies	0.0	0.0
Sales of Assets	0.0	0.0
Conference, Education & Training	0.0	0.0
Advertising	0.0	0.0
Printing & Photography	0.0	0.0
Postage & Delivery	0.0	0.0
Miscellaneous Operating	0.0	0.0
Depreciation Expense	0.0	0.0

## Program Expenditure Schedule

Agency: CCA Corporation Commission

Program: 9-3 SLI Named Claimants

Expenditure Category	FY 2015 Actual	FY 2016 Expd. Plan
<b>Other Operating Expenditures</b>		
<b>Expenditure Category Total</b>	0.6	0.0
<b>Fund Source</b>		
<b>Appropriated</b>		
1000-A General Fund (Appropriated)	0.6	0.0
<b>Fund Source Total</b>	0.6	0.0

Expenditure Category	FY 2015 Actual	FY 2016 Expd. Plan
<b>Equipment</b>		
Vehicles - Capital Leases	0.0	0.0
Furniture - Capital Leases	0.0	0.0
EDP Equipment - Mainframe - Capital Leases	0.0	0.0
EDP Equipment - Midrange - Capital Leases	0.0	0.0
EDP Equipment - PCs/LAN - Capital Leases	0.0	0.0
Telecommunication Equipment - Capital Leases	0.0	0.0
Other Equipment - Capital Leases	0.0	0.0
Capital Equipment Purchases	0.0	0.0
Vehicles - Non-Capital	0.0	0.0
Furniture - Non-Capital	0.0	0.0
EDP Equipment - Mainframe - Non-Capital	0.0	0.0
EDP Equipment - Midrange - Non-Capital	0.0	0.0
EDP Equipment - PCs/LAN - Non-Capital	0.0	0.0
Telecommunication Equipment - Non Capital	0.0	0.0
Other Equipment - Non-Capital	0.0	0.0
Non-Capitalized Software	0.0	0.0
<b>Expenditure Category Total</b>	0.0	0.0

Expenditure Category	FY 2015 Actual	FY 2016 Expd. Plan
<b>Capital Outlay</b>		
Capital Outlay	0.0	0.0
<b>Expenditure Category Total</b>	0.0	0.0

Expenditure Category	FY 2015 Actual	FY 2016 Expd. Plan
<b>Debt Services</b>		
Debt Service	0.0	0.0
<b>Expenditure Category Total</b>	0.0	0.0

Expenditure Category	FY 2015 Actual	FY 2016 Expd. Plan
<b>Cost Allocation</b>		
Cost Allocation	0.0	0.0
<b>Expenditure Category Total</b>	0.0	0.0

# Program Expenditure Schedule

Agency: CCA Corporation Commission  
 Program: 9-3 SLI Named Claimants

Expenditure Category	FY 2015 Actual	FY 2016 Expd. Plan
<b>Transfers</b>		
Transfers	0.0	0.0
<b>Expenditure Category Total</b>	<b>0.0</b>	<b>0.0</b>

## Arizona Corporation Commission

### Program 9 -1 Information Technology

#### Summary of Other Operating Expenditures

It is noted that typical IT consulting costs are reported under Other Operating Expenditures, COBJ 7150. The remaining majority of the requested appropriations covers ongoing maintenance and software licensing contract renewals.

Software and hardware licensing costs have significantly increased, requiring the continuation of at least \$205.0K in annual funding for the current database systems in use by the Commission. The IT division has several projects underway to bring Commission databases onto current operating platforms and improve the public's use of them, as well as improve staff efficiency.

#### Summary of Equipment

The proposed reduced budget of \$ 150.0 (thousand) base for Capital and Non-Capital equipment includes amounts for server hardware replacement or upgrades, planned PC replacements throughout the Commission, monitor and printer replacements, and capitalized software.