



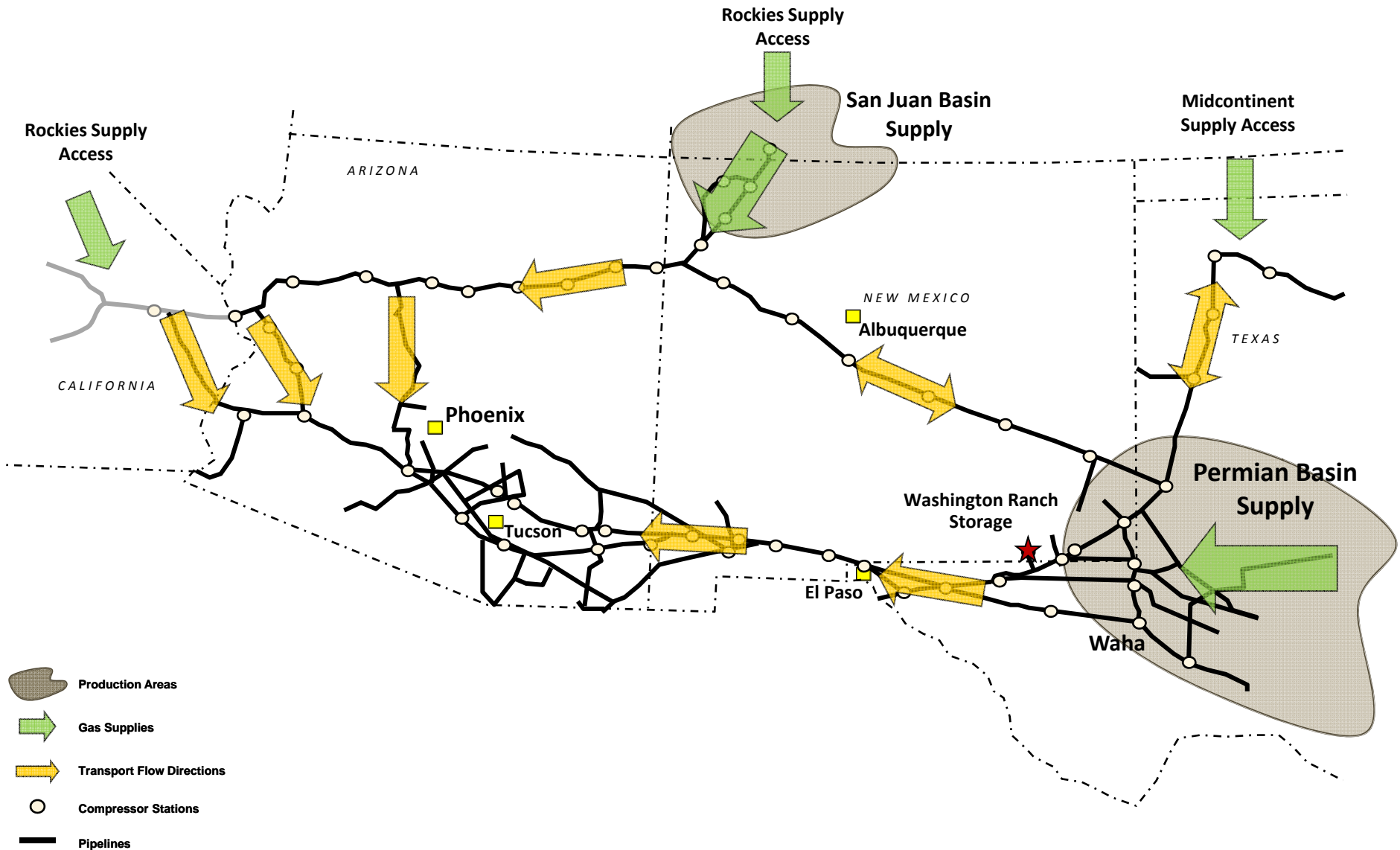
El Paso Natural Gas Pipeline 2017-18 Winter Preparedness

Presentation to the Arizona Corporation Commission
October 24, 2017

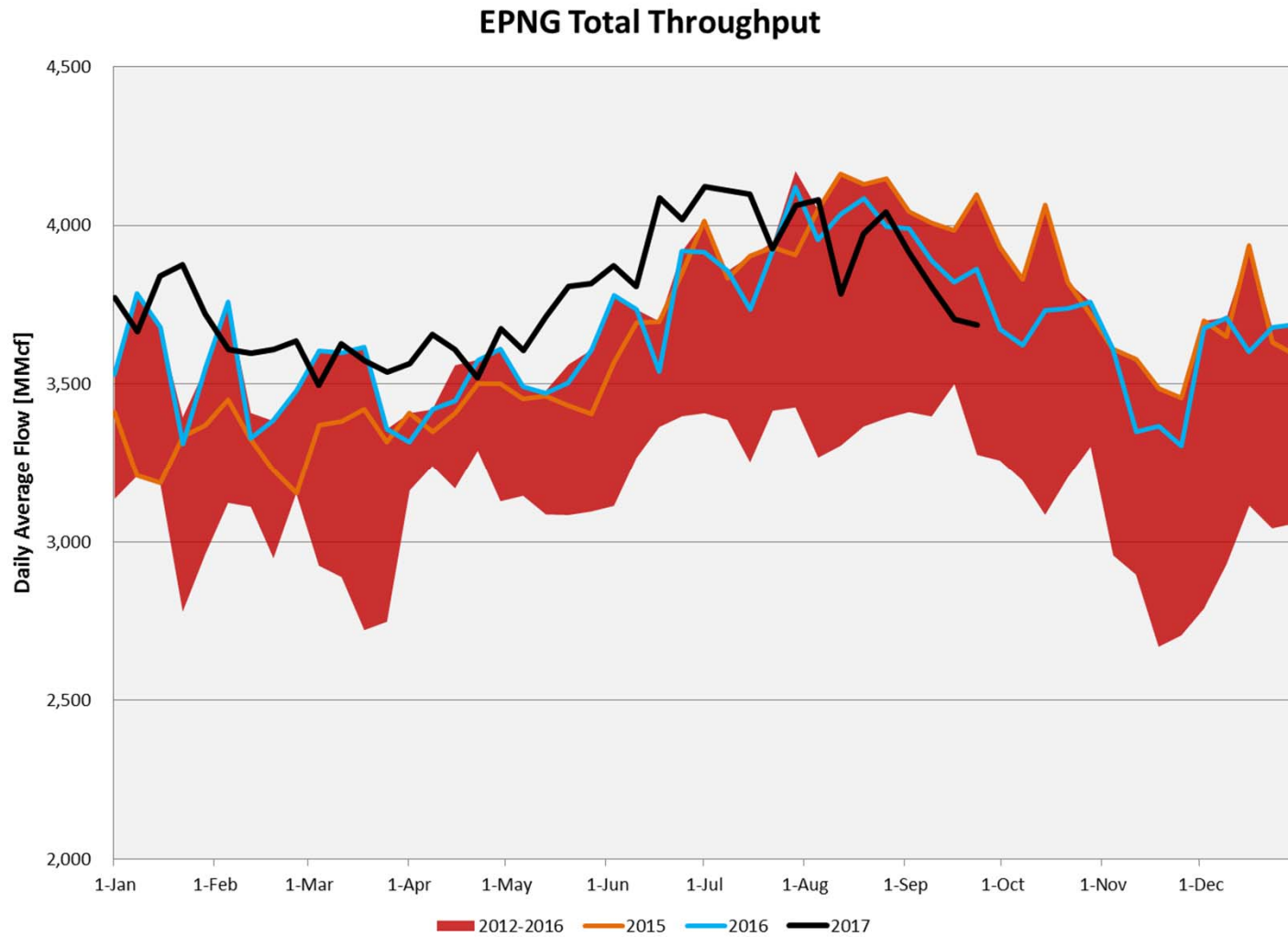
Russ Pyeatt
Manager, Gas Control (EPNG/Mojave/Sierrita)

EPNG System Overview

Supply Locations and Flow Direction

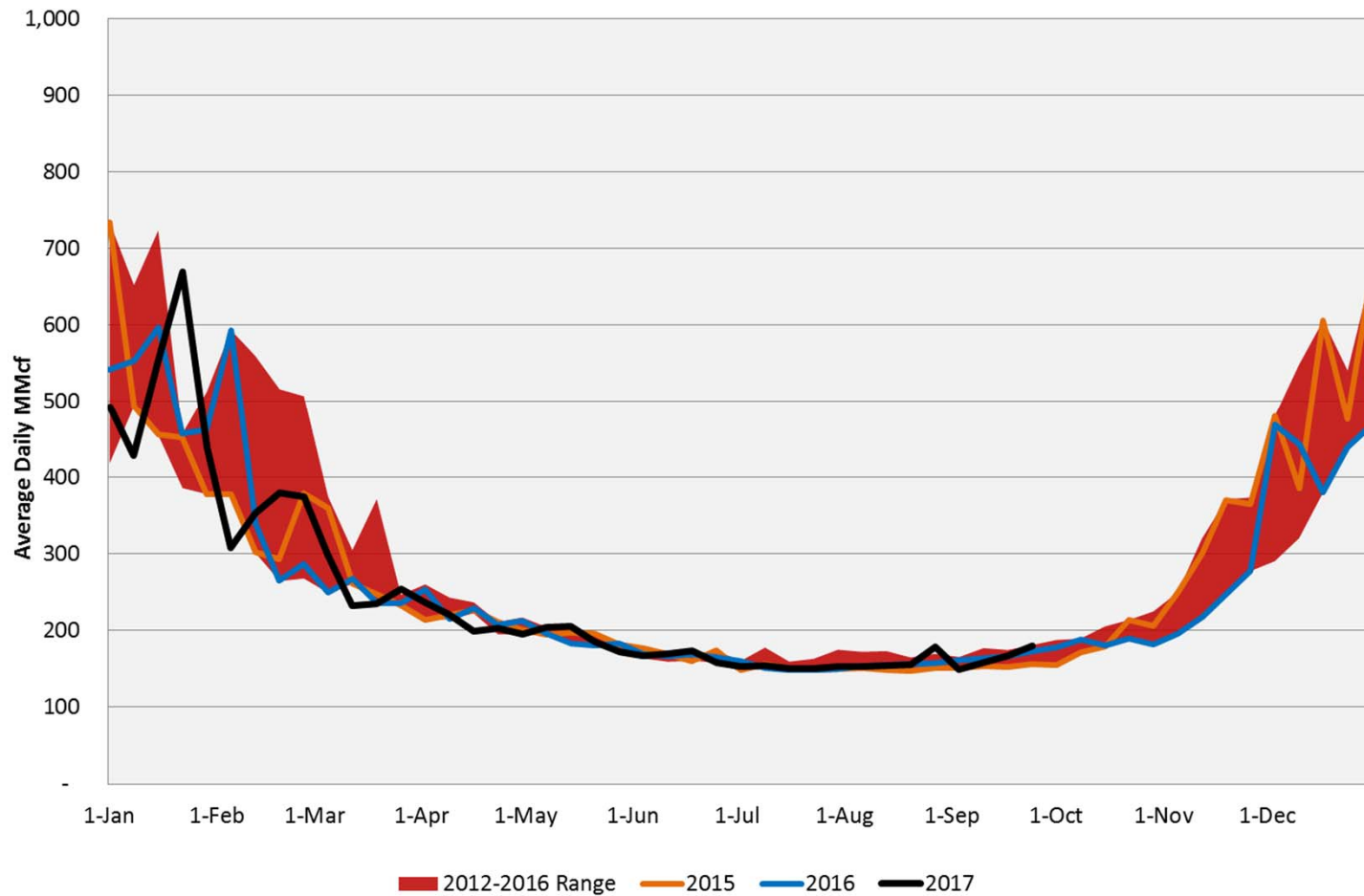


EPNG Throughput Total System



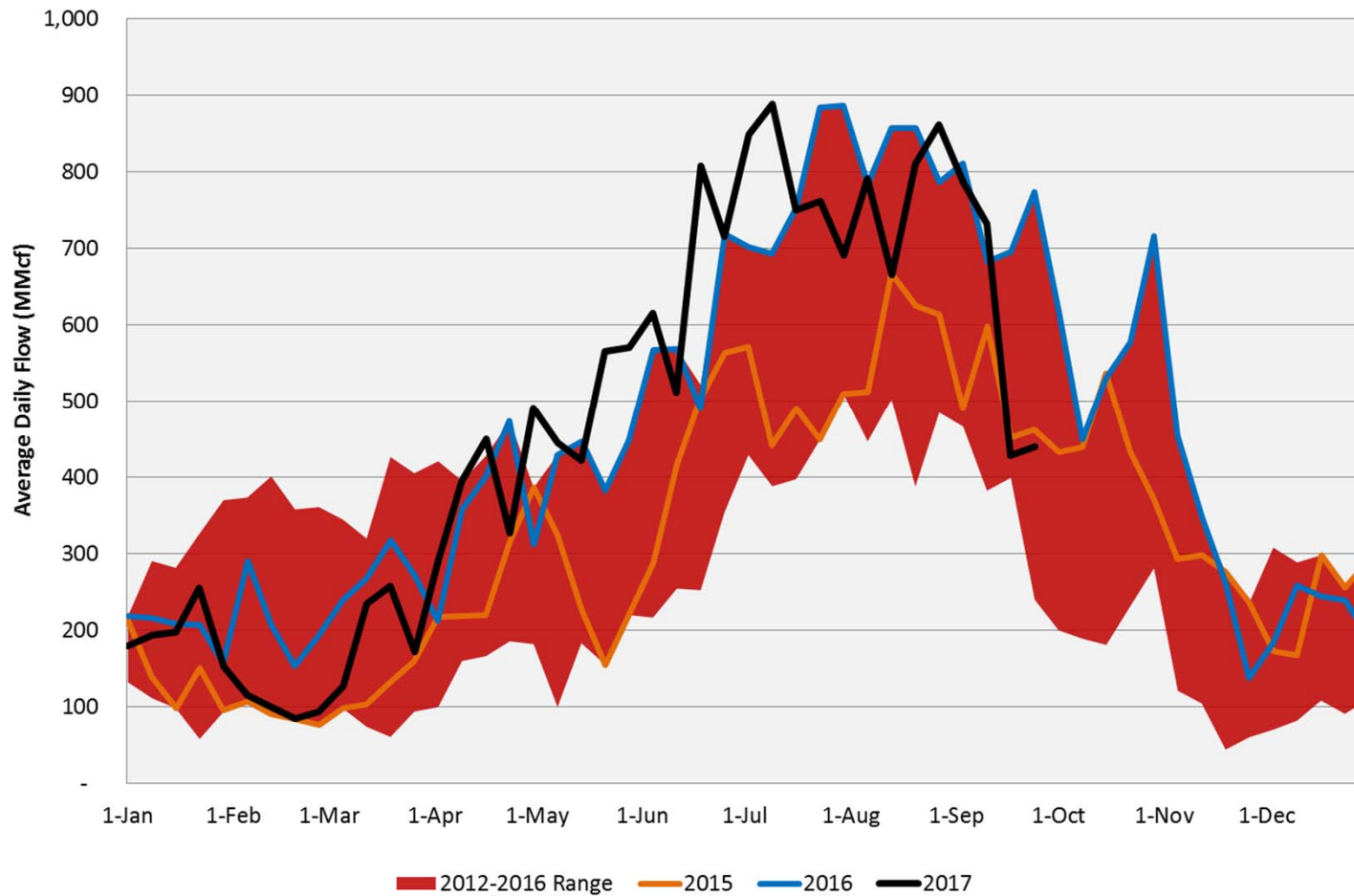
EPNG Throughput Arizona LDC/Industrial

Arizona LDC/Industrial Deliveries

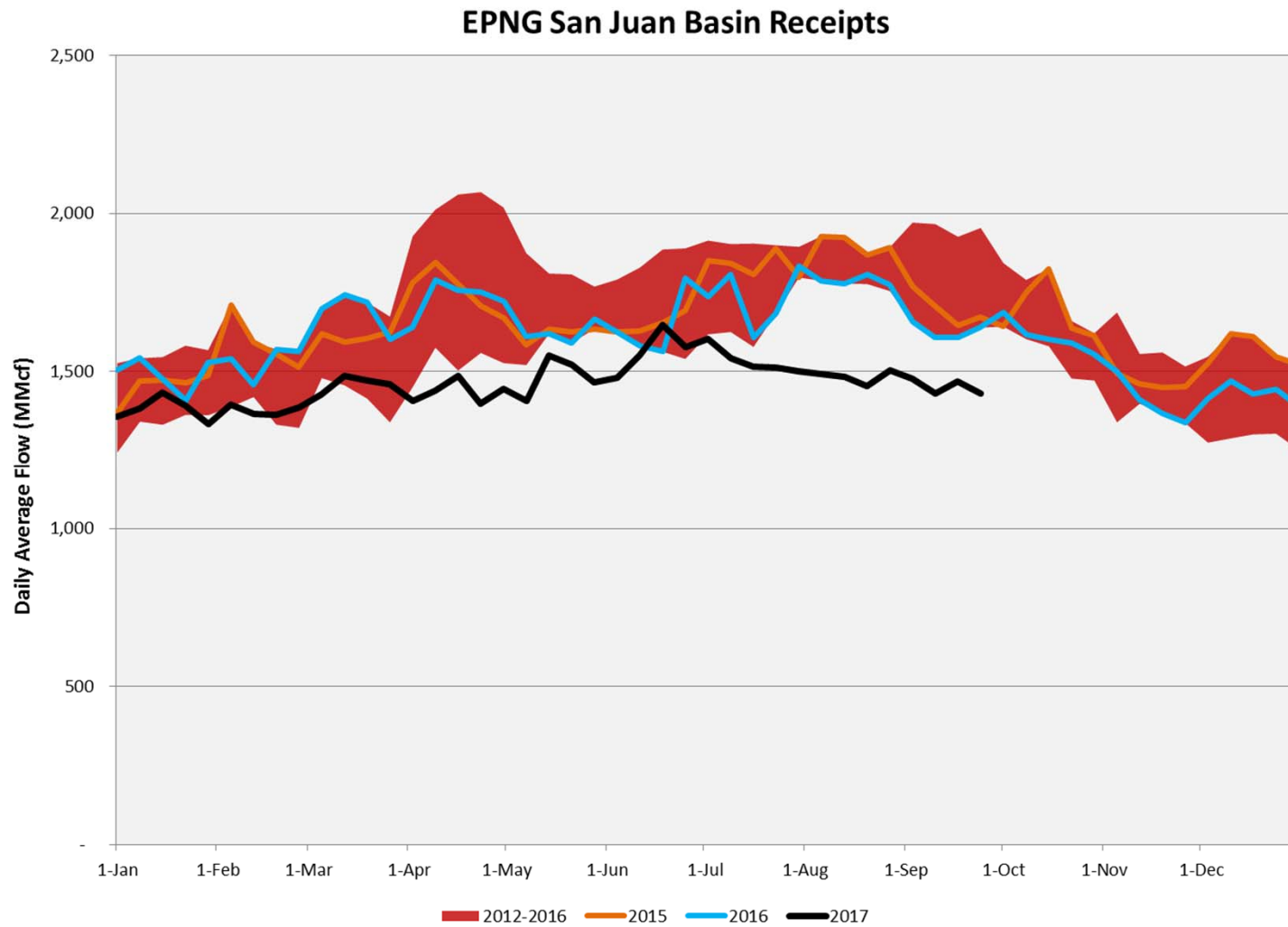


EPNG Throughput Arizona Power Generation

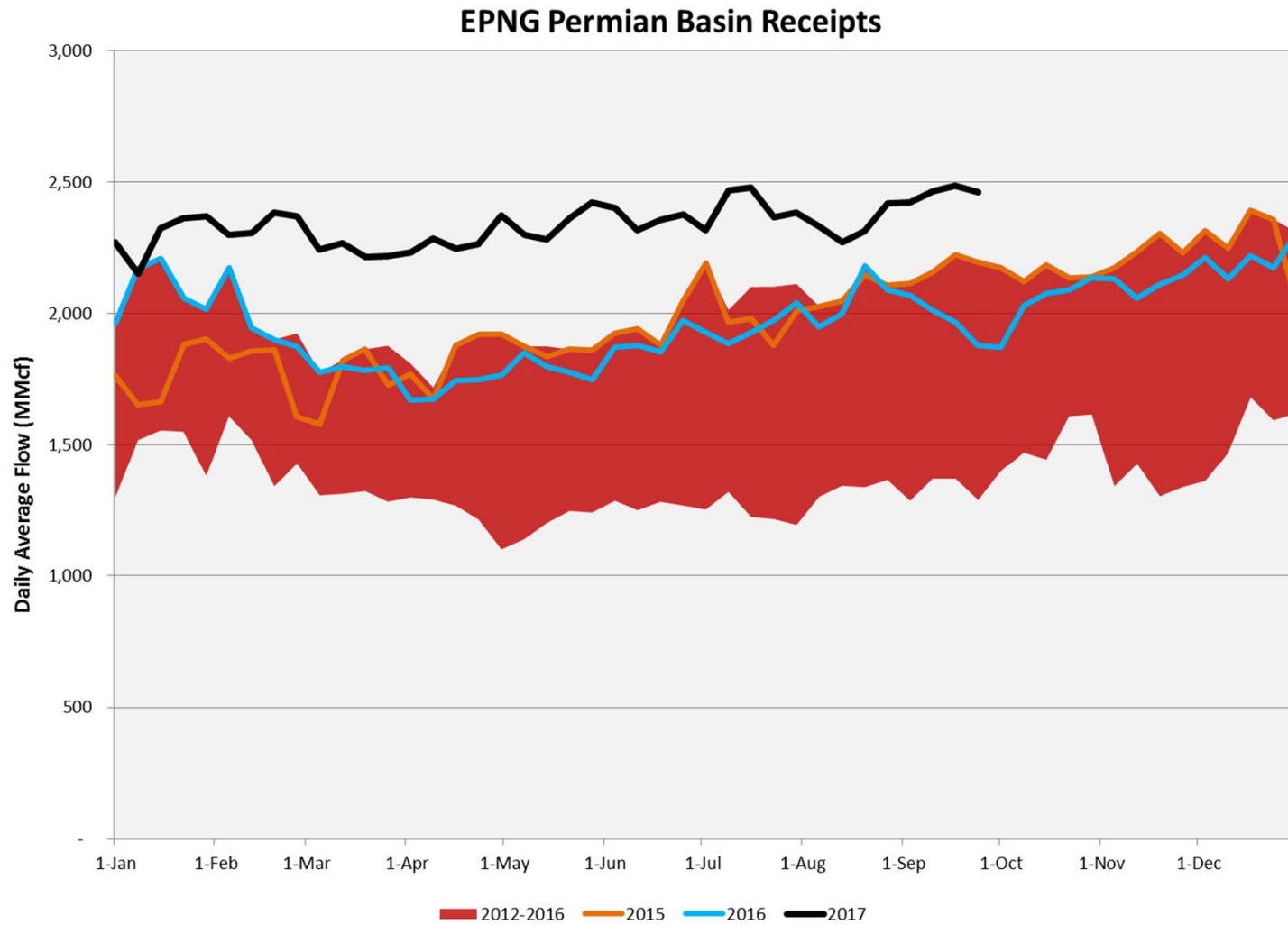
Arizona Power Generation Deliveries



EPNG Supply San Juan Basin



EPNG Supply Permian Basin



Winter Preparedness Plans

- **Staffing**
 - Gas Control is 24 x 7 x 365.
 - Field technicians are on-site or on-call.
- **Facility preparation**
 - Facility inspections with focus on weatherproofing.
 - Assessment of back-up power needs (existing stand-by generation and rental generators as deemed necessary).
 - Prepare vehicles for cold weather.
- **Communication and Coordination**
 - Customer Winter Preparedness Meeting (WebEx/conference call) – October 26, 2017.
 - Customer-specific winter preparedness meetings or communications.
 - Shipper and Stakeholder Mass Communication via EBB notices and text messages.
 - Shipper-Specific Communications.
- **Operational Response**
 - Multiple flow paths for supply to reach the market.
 - Access to supply area storage: Washington Ranch, Keystone Gas Storage and Merchant Ranch Storage.
 - EPNG has developed excellent working relationships with both affiliated and non-affiliated interconnecting pipelines which provide additional layers of contingency management in responding to emergency situations.